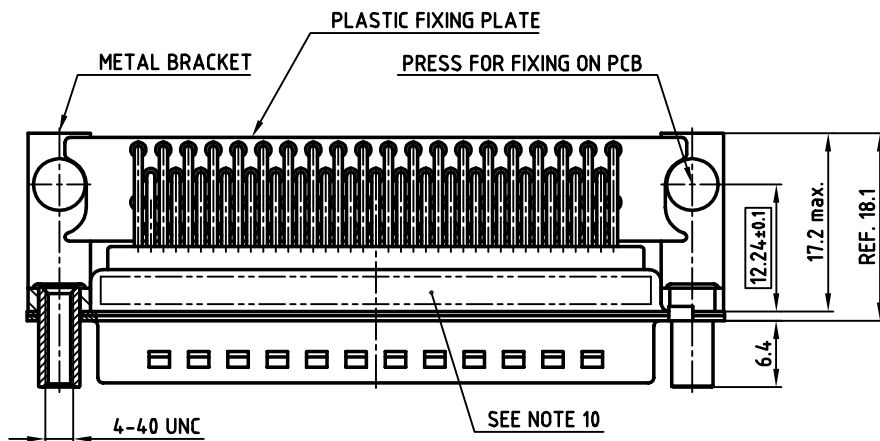
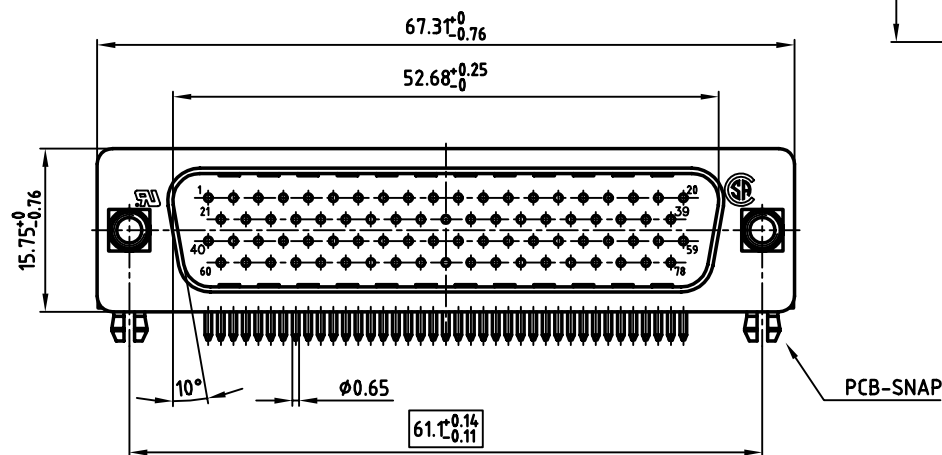
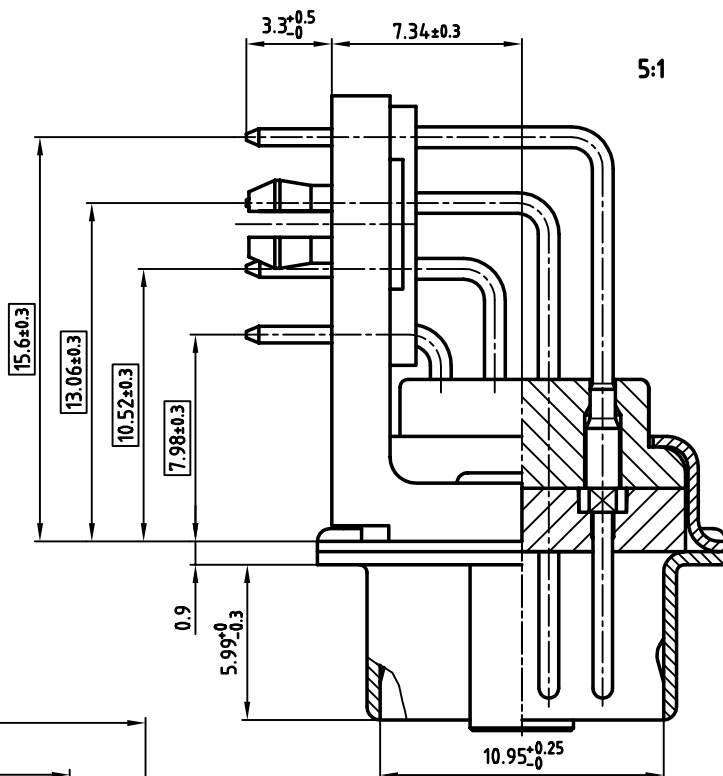


used for: D-SUB HD

NOTES:

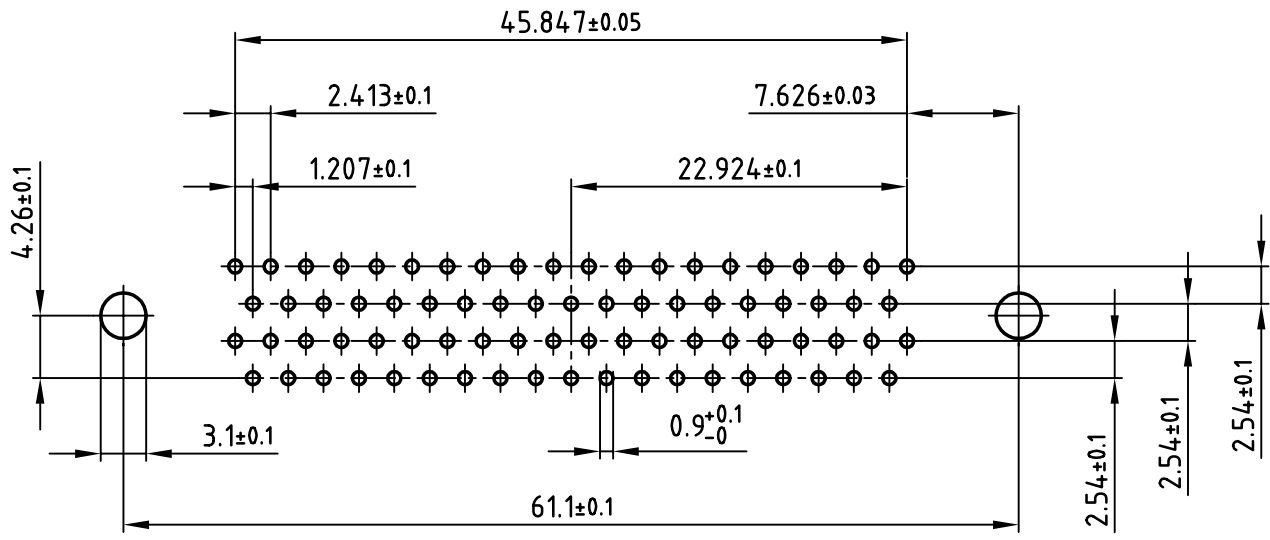
1. METALSHELLS: STEEL; min. 320µ" TIN
2. INSULATORS: PBT GF UL 94 V-0, BLACK
3. CONTACTS: COPPER ALLOY
4. PLATING: min. 8µ" HARD GOLD OVER min. 50µ" NICKEL
5. FIXING-PLATE: PBT GF UL 94 V-0, BLACK
6. METAL BRACKET: STEEL; min. 320µ" TIN over 80µ" NICKEL
7. THREADED LOCK: COPPER ALLOY; min. 200µ" TIN over 80µ" NICKEL
8. PCB-SNAP: COPPER ALLOY; min. 200µ" TIN over 80µ" NICKEL
PCB-HOLE: $\phi 3.1 \pm 0.1$; PCB THICKNESS 1.6mm
9. MAXIMUM TORQUE VALUE FOR THREAD: 6" LBS
10. CONNECTOR IS PART MARKED: 163A18239X CONEC Y/WW
11. = CRITICAL DIMENSION



THIS DRAWING MAY NOT BE COPIED OR REPRODUCED IN ANY WAY, AND MAY NOT BE PASSED ON TO A THIRD PARTY, WITHOUT WRITTEN PERMISSION. OWNERSHIP AND COPYRIGHT OF CONEC GmbH DO NOT ALTER CAD DRAWING BY HAND	tolerance			scale: 2:1 (5:1)
				material: SEE NOTES
	2002	date	name	title: D-SUB HD MALE 90° 78pos. SOLDER PIN ANGLED threaded lock, metal bracket, fixing-plate, clip
	drawn	03.05.	Parei	
	appd.	03.05.	E. Mickenbecker	
norm	DIN 41652			
d-old			dwg no: AutoCAD 2000	
				DIN-A 3
rev.	description	date		name
			part no: 163A18239X	

Directive 2002/95/EC
 "RoHS"
 Compliant

used for: D-SUB HD



THIS DRAWING MAY NOT BE COPIED OR REPRODUCED IN ANY WAY, AND MAY NOT BE PASSED ON TO A THIRD PARTY WITHOUT WRITTEN PERMISSION. OWNERSHIP AND COPYRIGHT OF CONEC GmbH DO NOT ALTER CAD DRAWING BY HAND

			tolerance	
2002	date	name		title: P.C.B. HOLE DRILLINGS D-SUB HD MALE 90° 78pos. ANGLED threaded lock, metal bracket, fixing-plate, clip
drawn	03.05.	Parei		
appd.	03.05.	E. Mickenbecker		
norm	DIN 41652			
d-old				
rev.	description	date	name	dwg no: AutoCAD 2000 16K1A566 part no: SEE SHEET 1



scale: 2:1	
material: SEE SHEET 1	
title: P.C.B. HOLE DRILLINGS D-SUB HD MALE 90° 78pos. ANGLED threaded lock, metal bracket, fixing-plate, clip	
dwg no: AutoCAD 2000	DIN-A
	4
	sh:2/2
part no: SEE SHEET 1	