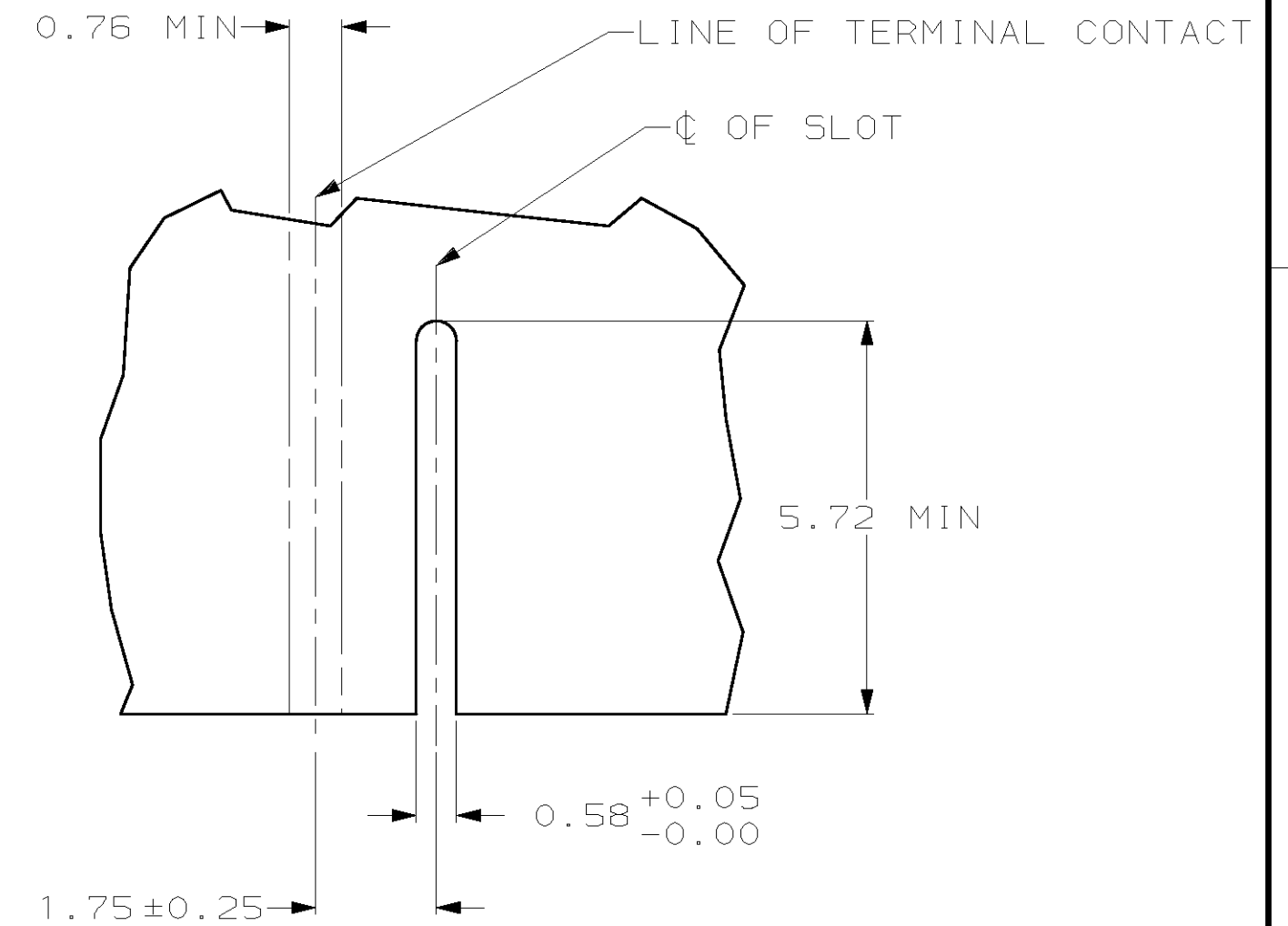
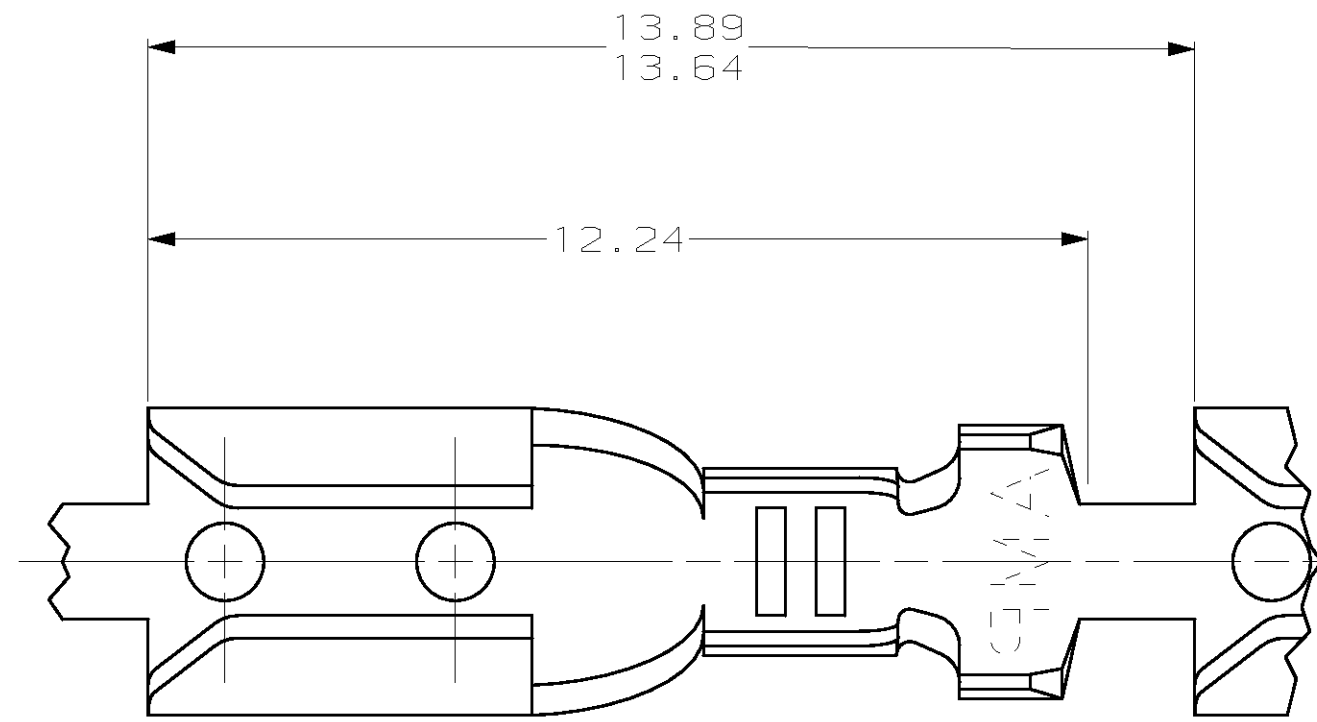


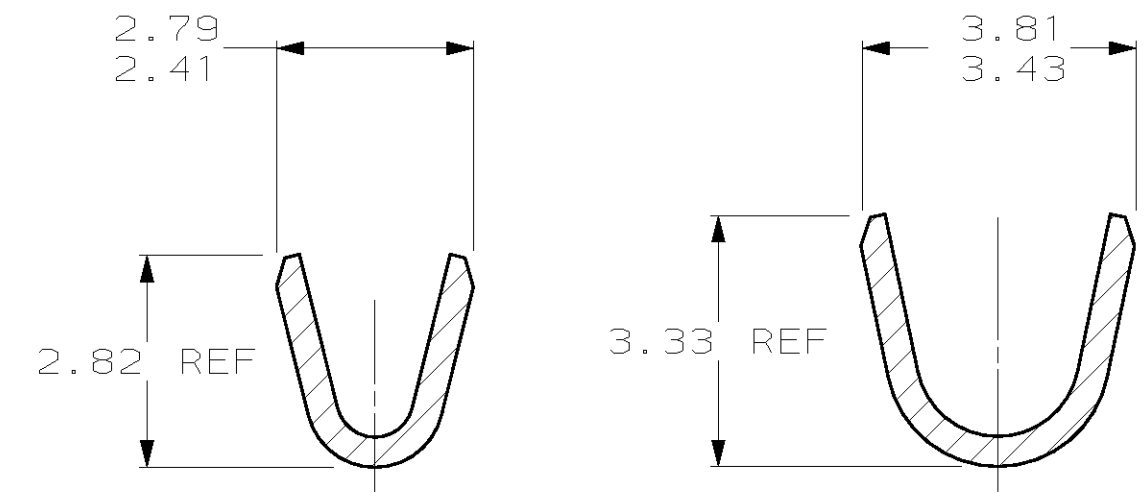
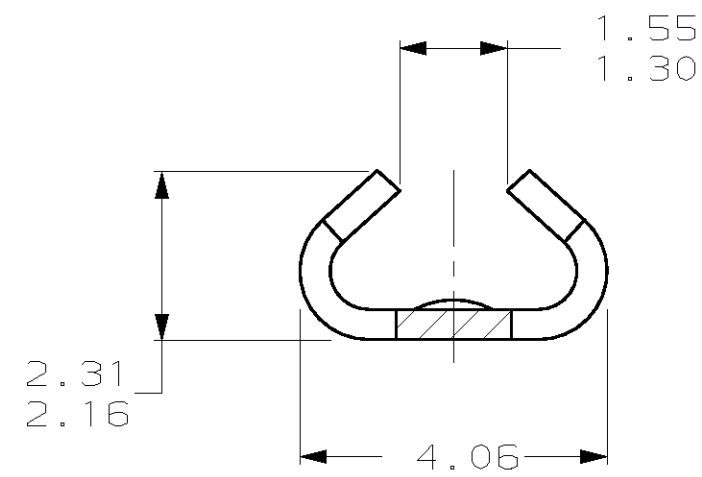
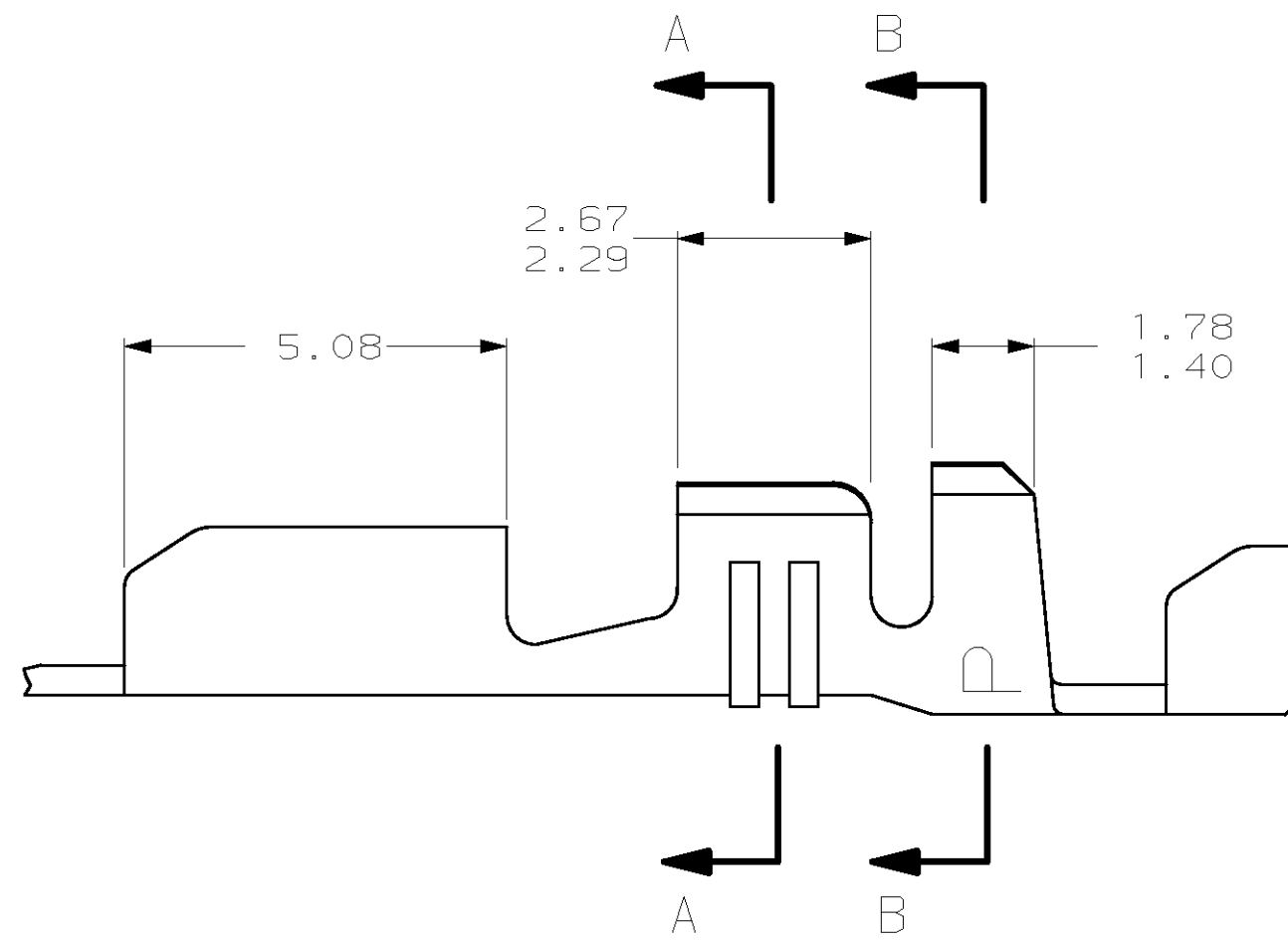
THIS DRAWING IS UNPUBLISHED. RELEASED FOR PUBLICATION  
 (C) COPYRIGHT 19 BY AMP INCORPORATED. ALL RIGHTS RESERVED.

LOC		DIST		REVISIONS			
P	LTR	DESCRIPTION	DATE	DWN	APVD		
CM	52	H	REV & REDWN PER EC 0L30-0096-97	2-28-97	TB	RS	

1. WIRE RANGE: 0.4 - 0.9 MM<sup>2</sup> (22 - 18 AWG)
2. INSULATION RANGE: 2.03 - 2.54



RECOMMENDED CUT OUT FOR 1.57 MAX THICK PANEL



SECTION A-A

SECTION B-B

1.30	.051	2.29	.090	3.43	.135	-	-
0.76	.030	2.16	.085	3.33	.131	13.89	.547
0.58	.023	2.03	.080	2.82	.111	13.64	.537
0.40	.016	1.78	.070	2.79	.110	12.24	.482
0.25	.010	1.75	.069	2.67	.105	5.72	.225
0.13	.005	1.57	.062	2.54	.100	5.08	.200
0.05	.002	1.55	.061	2.41	.095	4.06	.160
0.00	.000	1.40	.055	2.31	.091	3.81	.150
MM	IN	MM	IN	MM	IN	MM	IN

CONVERSION TABLE

**METRIC**

60704-1  
PART NUMBER

THIS DRAWING IS A CONTROLLED DOCUMENT.		DWN T. BECK 2-28-97	AMP Incorporated Harrisburg, PA 17105-3608	
DIMENSIONS: mm		CHK R. SWING 2-28-97	APVD A. BEDDICK 3-10-97	
TOLERANCES UNLESS OTHERWISE SPECIFIED: 0 PLC ± 1 PLC ± 2 PLC ±0.13 3 PLC ± 4 PLC ±		NAME TERMINAL, 22-18 AWG, .080-.100 INSULATION, AMP-EDGE™		
MATERIAL 0.40 BRASS		FINISH MATTE TIN		SIZE A2
CUSTOMER DRAWING		WEIGHT -		CAGE CODE 00779
SCALE 10:1		SHEET 1 OF 1		REV H