

**Technical specification:**

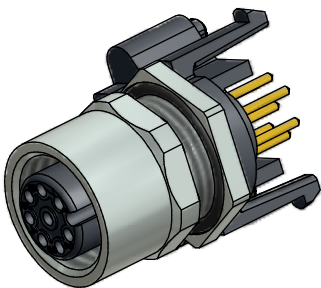
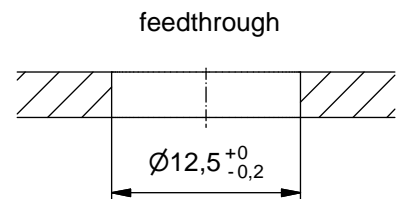
Rated voltage: IEC 61076-2-101	250 V
Current rating: IEC 61076-2-101	4 A at 40°C
Insulation resistance: IEC 60512	>=100 MΩ
Pollution degree: IEC 60664-1	3/2
Degree of protection: IEC 60529	IP 67, in mated condition
Temperature range: EN 60512-11-10 EN 60512-11-4	-30°C ... +85°C -40°C -40°C ... +85°C
Mating cycles: IEC 60512-9a	>=100

**Materials:**

Contact:	CuZn, Ni b / Au 0,2 gal.
Contact carrier:	PA GF, UL 94 V-0
Sealing:	FPM / NBR
Socket housing:	CuZn, nickel plated
Shroud:	spring steel, nickel plated

**Installation specification:**

recommended torque:	0,8-1 Nm
Conec installation tool:	Torque wrench: 36-000200 Insert across flats 14: 36-000370 Insert across flats 15: 36-000320



Part no:	Description:	Pos	Note:
43-01334	SAL - 12 - FKH8 - X10	8	
43-01335	SAL - 12S - FKH8 - X10	8	with shroud

DO NOT ALTER CAD DRAWING BY HAND RoHS & REACH compliant	Index: c 29.08.13 MG Ä4884 Data sheet revised, width across flats changed, installation specification added		dim. in mm		title: <b>Female socket, M12x1 axial, backmounting, dip solder, X10</b>							
			<table border="1" style="width: 100%; border-collapse: collapse;"> <tr> <td style="width: 30px;">date</td> <td style="width: 30px;">name</td> </tr> <tr> <td>drawn 22.09.08</td> <td>Fromm</td> </tr> <tr> <td>appd. 22.09.08</td> <td>W. Schmidt</td> </tr> </table>			date	name	drawn 22.09.08	Fromm	appd. 22.09.08	W. Schmidt	dwg no:  <b>43K1A745</b>
	date	name										
	drawn 22.09.08	Fromm										
appd. 22.09.08	W. Schmidt											
general tolerance: 0 ± 0,50mm 0,0 ± 0,25mm 0,00 ± 0,10mm * ± 1,5°				part no:								
THIS DRAWING MAY NOT BE COPIED OR REPRODUCED IN ANY WAY, AND MAY NOT BE PASSED ON TO A THIRD PARTY WITHOUT WRITTEN PERMISSION. OWNERSHIP AND COPYRIGHT OF CONEC GmbH												