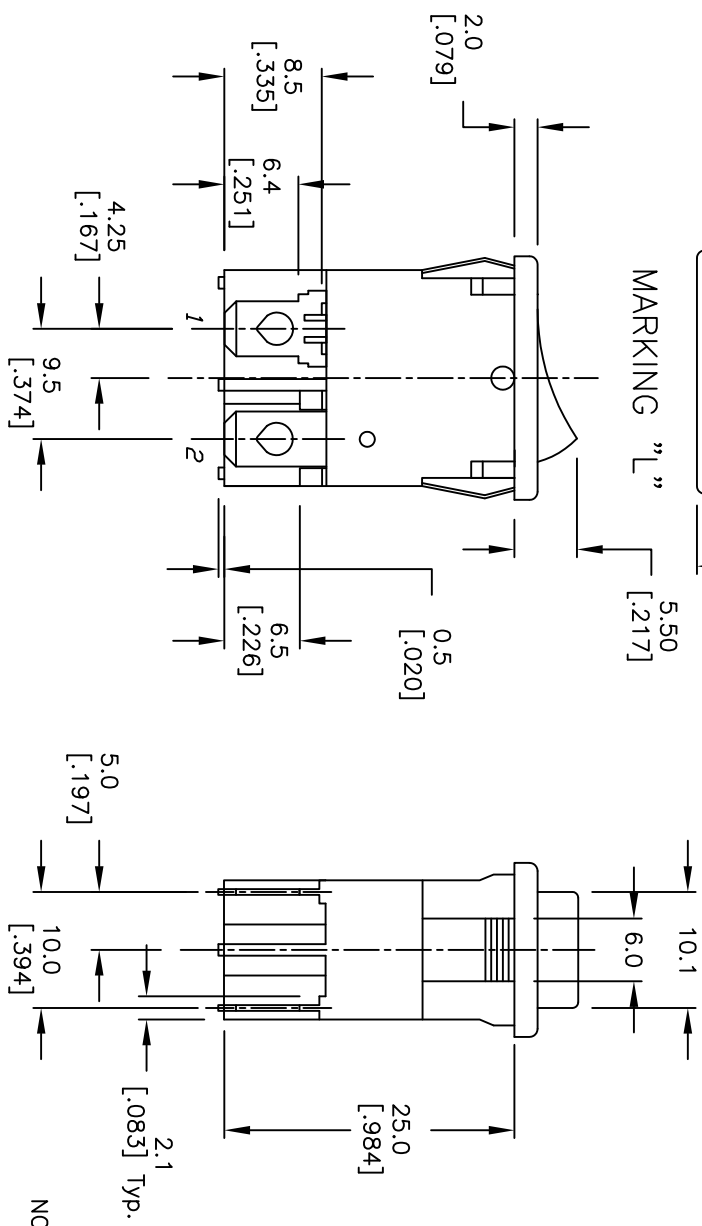
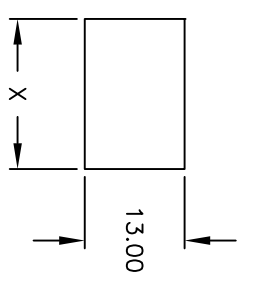


MARKING "L"

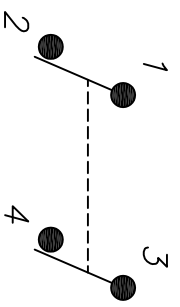


4.75 X 0.50 THK  
[.187 X .020]  
TERMINAL TYP.



RECOMMENDED PANEL MOUNTING  
NOT TO SCALE

PANEL THICKNESS	X
0.75-1.25 (.030-.049)	19.2 (.756)
1.25-2.0 (.049-.079)	19.4 (.764)



CIRCUIT: DPST

NOTES:

1. ALL DIMENSIONS IN MM [INCH]
2. GENERAL TOLERANCE: X.X=±0.4  
X.XX=±0.25
3. TERM. NOS. FOR REF. ONLY
4. RATING: cRUs 8A125/250VAC
5. MECHANICAL LIFE: 15,000 cycles
6. ELECTRICAL LIFE: 10,000 cycles
7. CONTACT RESISTANCE: 10mILLI-Ohms
8. INSULATION RESISTANCE: >1000Mega-Ohms
9. DIELECTRIC STRENGTH: 1,500 Volts for 1min.  
3,000 Volts between poles
10. OPERATING TEMP: -30°C to 85°C
11. HOUSING/ACTUATOR COLOR: BLACK
12. SEE DESIGNATED ROCKER MARKING
13. ▲ DESIGNATE CRITICAL PARAMETER:



C	20434	CORRECT RATING	01/27/12	BMA
B	12538	REVISED PART DESCRIPTION	11/7/02	CB
REV.	ECN No.	DESCRIPTION	DATE	CHKD

TITLE		RC1083B BLK BLK LF	
SCALE	DATE	DR	DWG
1.5:1	11/5/02	CB	P301502
REV		C	

THE INFORMATION CONTAINED IN THIS DOCUMENT IS PROPRIETARY TO E-SWITCH AND IS NOT TO BE COPIED OR TRANSMITTED