

## Light Kits



9420-1905



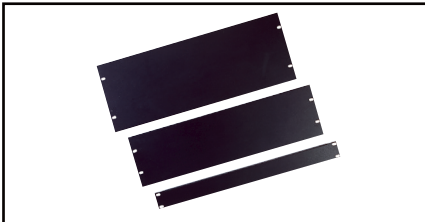
9420-1906

### Construction

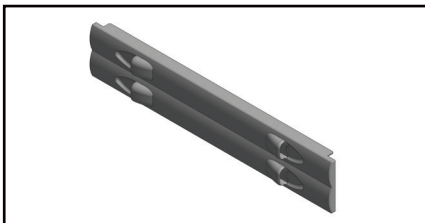
- Light Kits are compatible with all 19" mount racks or enclosures
- Uses one (1) rack unit
- Includes 120V AC adapter and mounting hardware

### Options

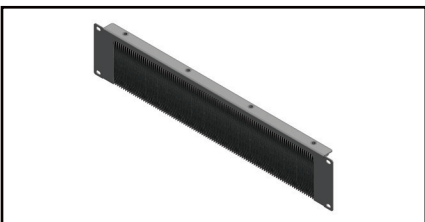
Description	Belden Part Number
Dual Adjustable 5W Halogen Lights & Dimmer, UL Listed	9420-1905
Single Adjustable 5W Halogen Light & Dimmer, UL Listed	9420-1906



Steel Filler Panels



Plastic Filler Panel



XFPWB2U101  
Brushed filler panel allows routing of cable from front to rear while providing air flow separation. Panel is open ended, allowing mounting without having to unplug cables.

## Filler Panels

### Application

- Filler Panels allow blocking of unused rack units (RU) for optimized airflow and separation between cold supply air and hot return air
- Best practices in Data Centers includes blanking of all unused rack units (RU)
- Filler Panels are compatible with 19" mount racks and enclosures

Description	Color	Belden Part Number
-------------	-------	--------------------

### Options

#### Filler Panels, Steel (includes Mounting Hardware)

1RU Solid Filler Panel	Black/CO White	9910-0100-01/-02
2RU Solid Filler Panel	Black/CO White	9911-0200-01/-02
2RU Solid Filler Panel with "Belden" Logo Silk Screen	Black	9911-0201-01
3RU Solid Filler Panel	Black/CO White	9912-0300-01/-02
4RU Solid Filler Panel	Black/CO White	9913-0400-01/-02
8RU Solid Filler Panel	Black/CO White	9914-0800-01/02

#### Filler Panels, Plastic Tool-Less

1RU Solid Filler Panel (fits 10-32, 12-24 and square holes rails)	Black/CO White	9910-0100PL-01/-02
2RU Solid Filler Panel (fits 10-32, 12-24 and square holes rails)	Black/CO White	9911-0200PL-01/-02

#### Filler Panels with Brush Pass Thru (includes Mounting Hardware)

1RU Filler Panel with Brush (open ended)	Black/CO White	XFPWB1U101/02
2RU Filler Panel with Brush (open ended)	Black/CO White	XFPWB2U101/02
3RU Filler Panel with Brush (open ended)	Black/CO White	XFPWB3U101/02
4RU Filler Panel with Brush (open ended)	Black/CO White	XFPWB4U101/02