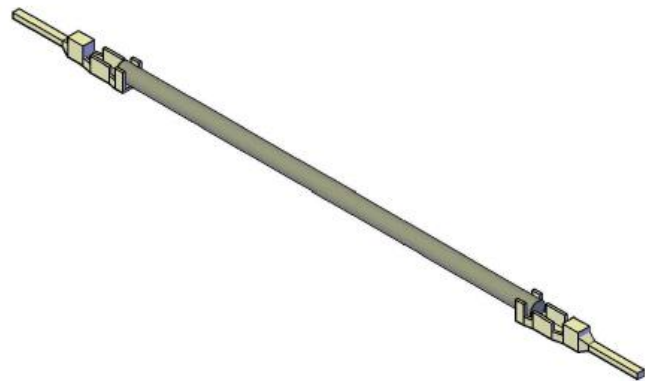
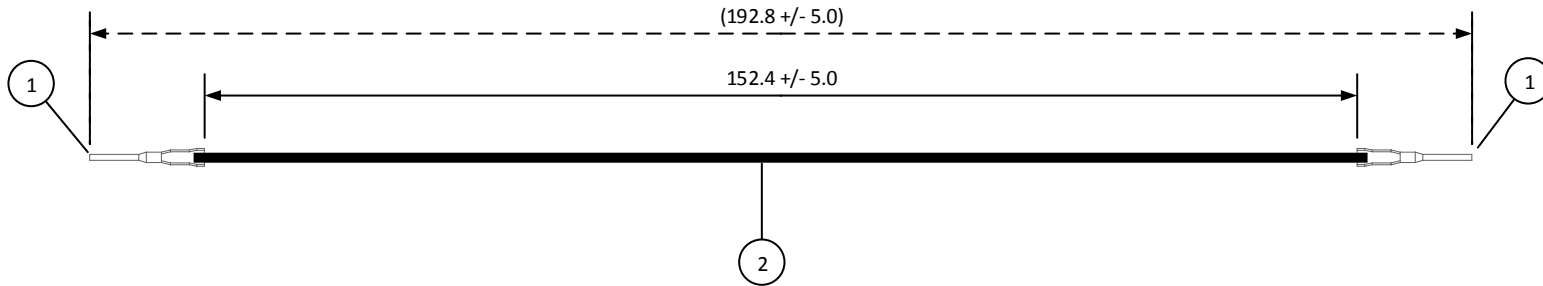


4		3		2		1	
ITEM	CONNECTOR PART NO.	DESCRIPTION	IPI CHECK	EOR CHECK	Applicable Tooling		
1	SWPJT-21T-P0.5	WPJ CONNECTOR CONTACT			APPLICATOR		
2	UL1015, 18 AWG	BLACK					

Applicable Housings	
NO. OF CIRCUITS	HOUSING PART NO.
2	02T-WPJV-1-SM
3	03T-WPJV-1-SM



JST

SCALE	CUSTOMER NAME	CUSTOMER PART NO.
1: 1		
DIMENSIONS	DESCRIPTION	
All dimensions are in MM with a tolerance of +/- 3.0 unless otherwise specified.	5.0 mm Pitch WPJ Series Standard Leads - 6" Inside Length DOUBLE-END LEADS, M-M	
DRAWN BY	ASSEMBLY PART NO.	
STEVEN PILKINGTON	AWPJWPJ18K152T	
CHECKED BY	DRAWING NO. & REVISION	REVISED
JUSTIN BAKER	GAM-191	6/7/2016

REV.	DESCRIPTION	DATE	BY
------	-------------	------	----

4 | 3 | 2 | 1