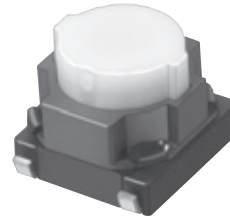


6 mm Square Long Travel SMD Light Touch Switches

Type: **EVQP0/EVQP1/EVQ9P**



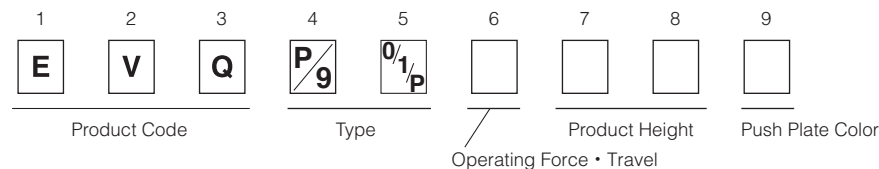
■ Features

- External dimensions : 6.0 mm×6.1 mm, Height 5.0 mm
(Including the push plate)
- Steady and low contact resistance (100 mΩ max.)
- Excellent solderability (J-bent-type terminals)

■ Recommended Applications

- Operating switches for car electronic equipment.
- Input on operating switches for telephones, electronic musical instruments, etc.

■ Explanation of Part Numbers



■ Specifications

| | | | |
|-------------------------------|---------------------------------|--|----------------------------|
| Type | | Snap action/Push-on type SPST | |
| Electrical | Rating | 10 μA 2 V DC to 50 mA 12 V DC (Resistive load) | |
| | Contact Resistance | 100 mΩ max. | |
| | Insulation Resistance | 100 MΩ min. (at 100 V DC) | |
| | Dielectric Withstanding Voltage | 250 V AC for 1 minute | |
| | Bouncing | 10 ms max. (ON, OFF) | |
| Mechanical | Operating Force | 1.6 N±0.5 N, 2.0 N±0.6 N 2.5 N±0.6 N 3.0 N±0.8 N 3.5 N±1.0 N | 2.2 N±0.6 N 2.5 N±0.6 N |
| | Travel | 1.3 mm±0.2 mm | 1.0 mm±0.2 mm |
| Endurance | Operating Life | 3.5 N type: 30,000 cycles min. 1.6 N, 2.0 N, 2.2 N, 2.5 N, 3.0 N types: 100,000 cycles min. | |
| Operating Temperature | | -40 °C to +85 °C | |
| Storage Temperature | | -40 °C to +85 °C (Bulk) -20 °C to +60 °C (Taping) | |
| Minimum Quantity/Packing Unit | | 2,000 pcs. Embossed Taping (Reel Pack) | |
| Quantity/Carton | | 10,000 pcs. | |

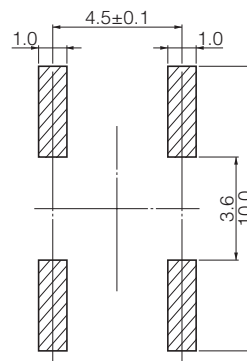
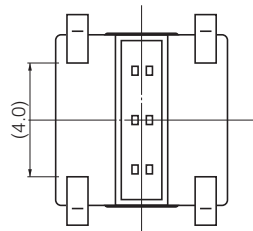
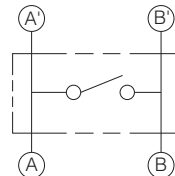
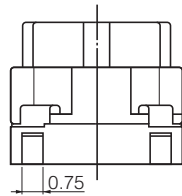
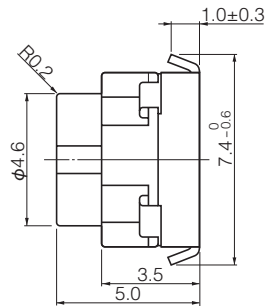
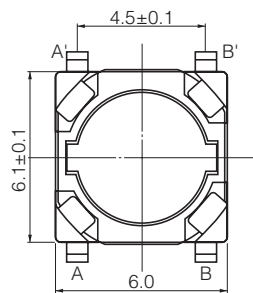
Design and specifications are each subject to change without notice. Ask factory for the current technical specifications before purchase and/or use.
Should a safety concern arise regarding this product, please be sure to contact us immediately.

■ Dimensions in mm (not to scale)

EVQP0
EVQP1
EVQ9P

(Embossed Taping)

General dimension tolerance : ± 0.2
() dimensions are reference dimensions.

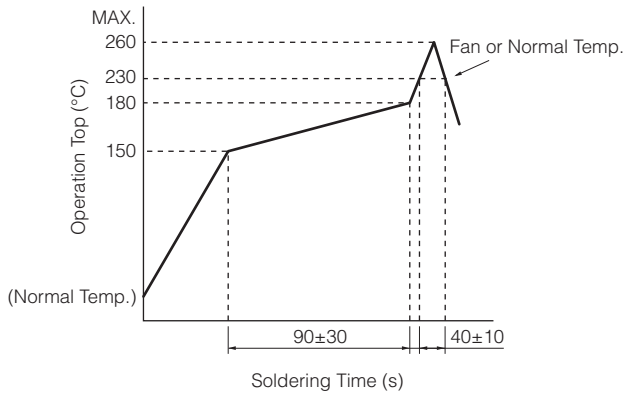


PWB land pattern for reference

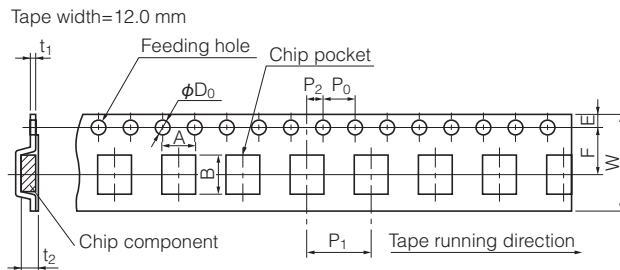
| Part Numbers | Operating Force | Travel | Height | Push Plate Color | Operating Life |
|--------------|-----------------|--------|--------|------------------|----------------|
| EVQP1K05M | 2.2 N | 1.0 mm | 5.0 mm | Natural | 100,000 cycles |
| EVQP1Y05M | 2.5 N | 1.0 mm | 5.0 mm | Natural | 100,000 cycles |
| EVQP1905M | 1.6 N | 1.3 mm | 5.0 mm | Natural | 100,000 cycles |
| EVQP1F05M | 2.0 N | 1.3 mm | 5.0 mm | Natural | 100,000 cycles |
| EVQP1D05M | 2.5 N | 1.3 mm | 5.0 mm | Natural | 100,000 cycles |
| EVQP0405M | 3.0 N | 1.3 mm | 5.0 mm | Natural | 100,000 cycles |
| EVQ9P105M | 3.5 N | 1.3 mm | 5.0 mm | Natural | 30,000 cycles |

Design and specifications are each subject to change without notice. Ask factory for the current technical specifications before purchase and/or use.
Should a safety concern arise regarding this product, please be sure to contact us immediately.

■ Recommended Reflow Soldering Conditions



● Embossed Carrier Taping



Taping condition : Lack of products in the middle of taping should be one MAX, but total quantity specified in the specifications should be secured.

Peeling off strength of top tape : It should be within 0.2N to 1.0N at 165 degree in peeling off angle.

Joint of carrier tape : One joint per one reel may exist.

Unit: mm

| Part No. | Height | A | B | W | F | E | P_1 | P_2 | P_0 | D_0 Dia. | t_1 | t_2 |
|-------------------------|--------|---------|---------|----------|---------|-----------|---------|---------|---------|-----------------------------------|---------|-----------|
| EVQP0 EVQP1 EVQ9P | 5.0 | 6.4±0.2 | 7.9±0.2 | 12.0±0.3 | 5.5±0.1 | 1.75±0.10 | 8.0±0.1 | 2.0±0.1 | 4.0±0.1 | 1.5 ^{+0.1} ₋₀ | 0.4±0.1 | 5.25±0.20 |