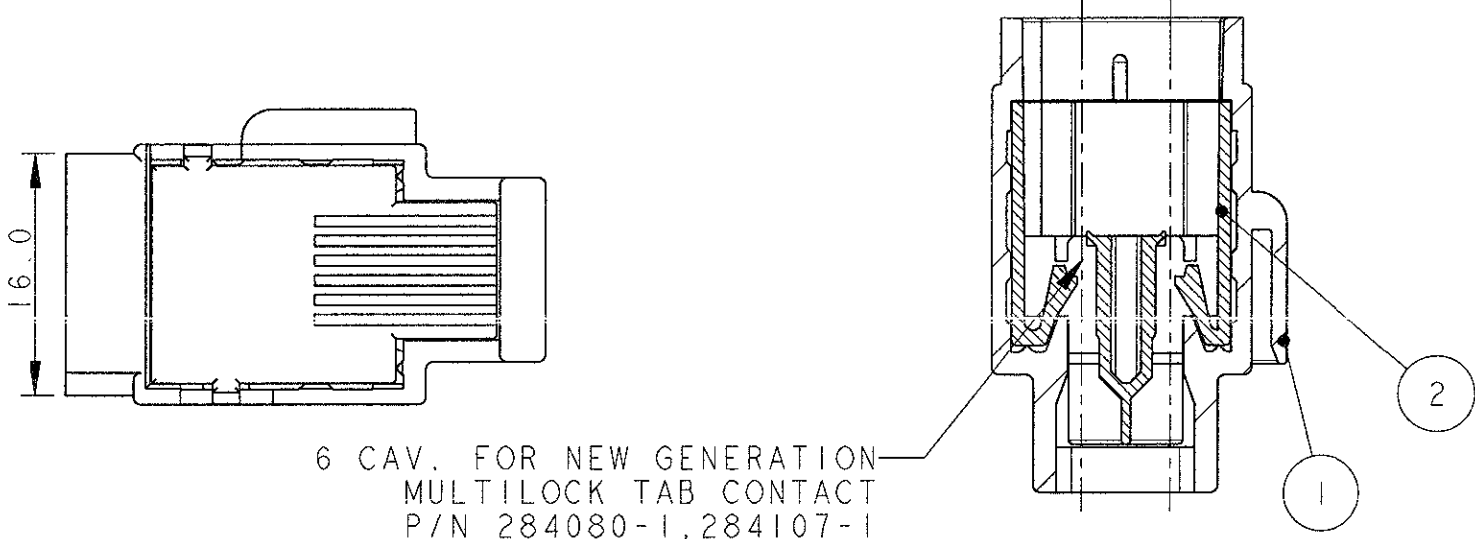


LOC 1
 DIST -

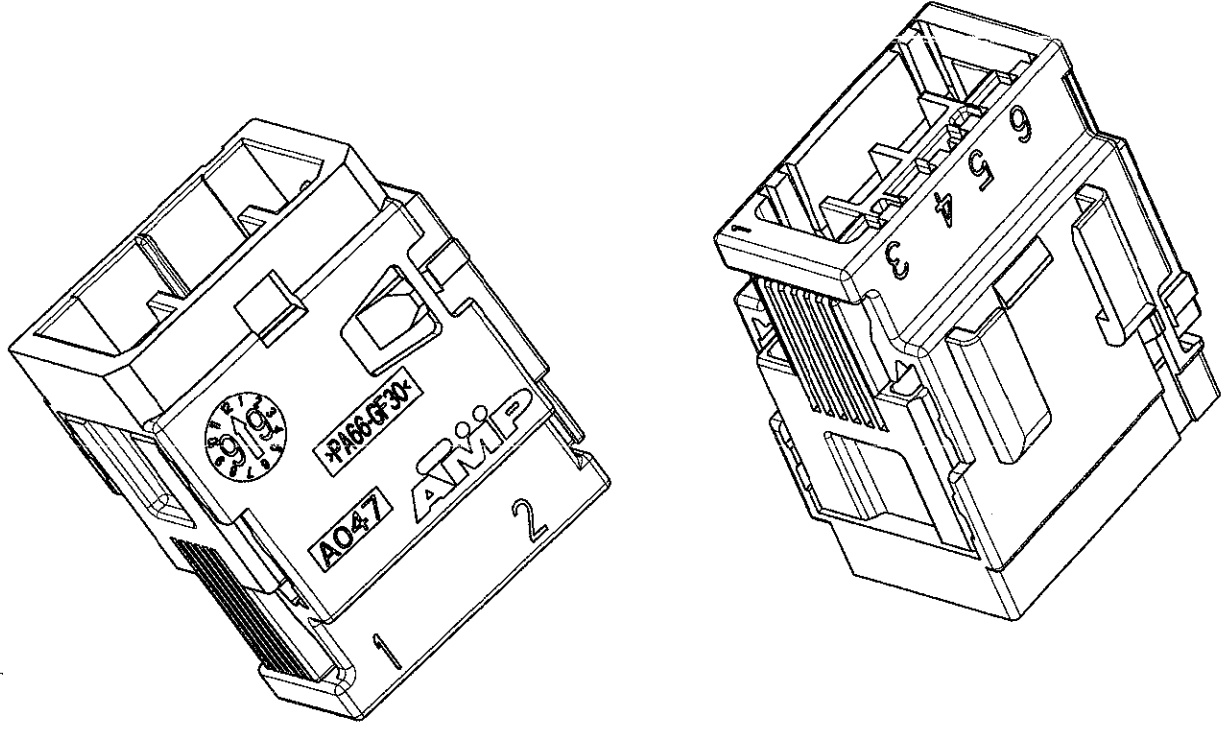
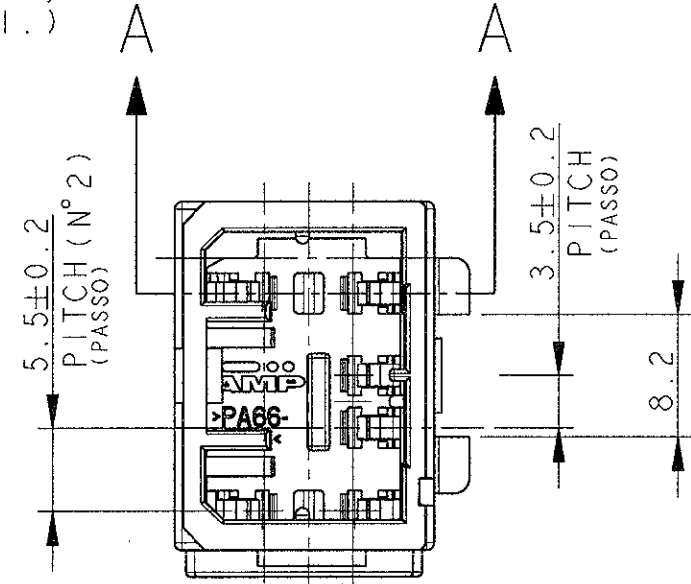
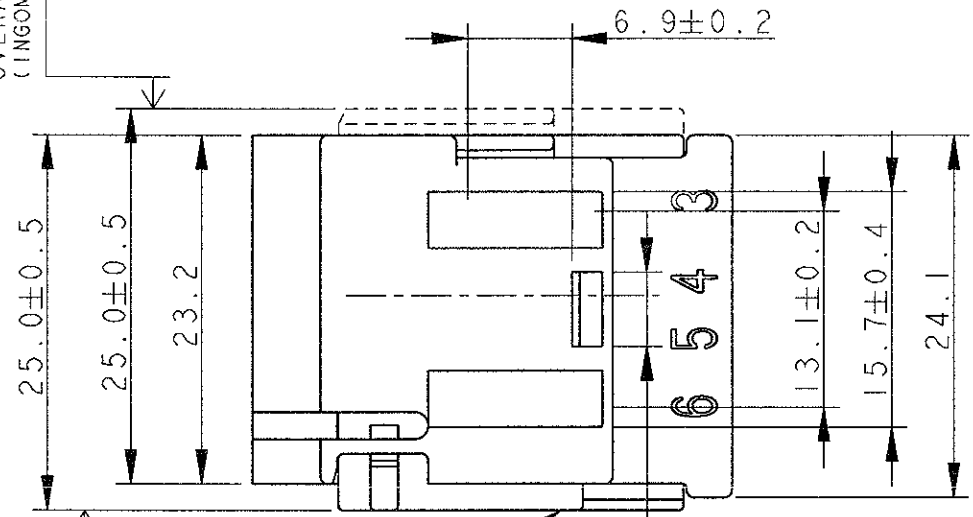
REVISIONS		DESCRIPTION	DATE	DWN	APVD
REVISIONI		DESCRIZIONE	DATA	DIS.	APP.
P	LTR REV				
	A	FIRST ISSUE EC ET00-0065-99 (WAS 96-51234)	MAR99	A.M.	O.C.
	A1	RELEASED FOR PRODUCTION ET00 0190-99	06JUL99	G.S.	O.C.
	A2	ADDED POL. -1 ET00 0161-00	11JUL00	D.B.	O.C.
	A3	RELEASED FOR PRODUCTION POL. -1 (ET00-0063-02)	04APR02	M.P.	O.C.
	B	ADDED LOCKING DEVICE (ET00-0074-03)	22 OCT 03	M.P.	O.C.

SECTION A-A
 (SEZIONE A-A)



6 CAV. FOR NEW GENERATION MULTILOCK TAB CONTACT P/N 284080-1, 284107-1 AND 284108-1.
 (6 CAVITA' PER CONTATTI MASCHI NUOVA GENERAZIONE MULTILOCK P/N 284080-1, 284107-1 E 284108-1.)

OVERALL DIM. WITH SEC. LOCK CLOSED:
 (INGOMBRO CON AGGANCIO SECONDARIO CHIUSO:)



P/N 282992-2 AS SHOWN
 (P/N 282992-2 COME MOSTRATO)

OVERALL DIM. WITH SEC. LOCK OPENED:
 (INGOMBRO CON AGGANCIO SECONDARIO APERTO:)

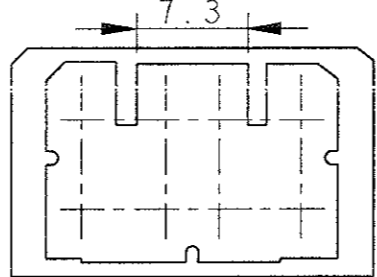
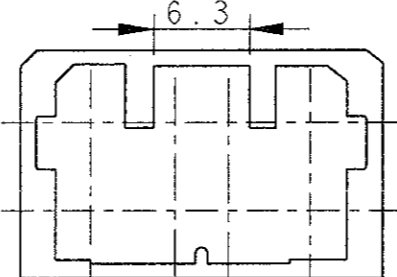
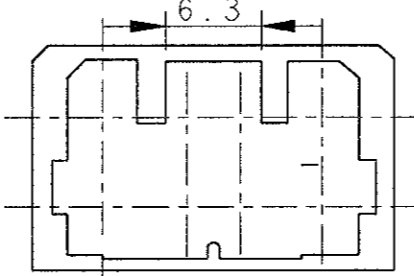
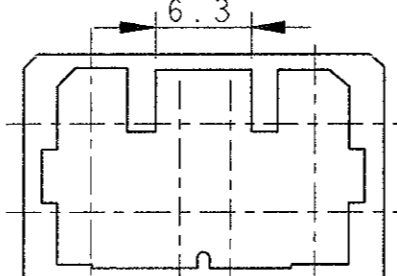
SUPPLIED WITH SEC. LOCKING DEVICE ON PRE-ASSEMBLED POSITION (FORNITO CON IL DISPOSITIVO DI AGGANCIO SECONDARIO IN POS. PRE-ASSEMBLATO)

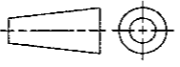
FOR POLARIZATION DETAILS AND COUNTERPARTS P/N'S SEE SHEET 2 (PER DETTAGLIO POLARIZZAZIONI E P/N'S CONTROPARTI VEDERE FOGLIO 2)

ITEM	DESCRIPTION (DESCRIZIONE)	FINISH/COLOUR (FINITURA/COLORE)	MATERIAL (MATERIALE)	PART NUMBER (NUMERO)
2	TAB HOUSING (BLOCCHETTO PORTA MASCHI)	SEE SHEET 2 VED. FOGLIO 2	PA 66-G.F.	SEE SHEET 2 VED. FOGLIO 2
1	SEC. LOCKING DEVICE (AGGANCIO SECONDARIO)	SEE SHEET 2 (VED. FOGLIO 2)	PA 66-G.F.	SEE SHEET 2 (VED. FOGLIO 2)

THIS DRAWING IS A CONTROLLED DOCUMENT FOR AMP INCORPORATED. IT IS SUBJECT TO CHANGE AND THE CONTROLLING ENGINEERING ORGANIZATION SHOULD BE CONTACTED FOR THE LATEST REVISION. / QUESTO DISEGNO È UN DOCUMENTO DI PROPRIETÀ E RESPONSABILITÀ DELL'AMP INCORPORATED. È SOGGETTO A VARIAZIONI. PER OTTENERE L'ULTIMA REVISIONE DEL DISEGNO CONTATTARE L'UFFICIO TECNICO RESPONSABILE.		DWN / DIS. 04MAR99	AMP AMP Italia S.p.A. C.so F.lli Cervi 15 Collegno (TO)
DIMENSIONS: DIMENSIONI: mm		A. MARANGON 04MAR99	
TOLERANCES UNLESS OTHERWISE SPECIFIED: TOLLERANZE: SE NON DIVERSAMENTE SPECIFICATO		CHK / CONT. O. CANUTO 04MAR99	NAME: 6 POS. NEW GENERATION TAB CONNECTOR for trucks
0 PLC / DEC ±0.3 1 PLC / DEC ±0.3 2 PLC / DEC ±0.3 3 PLC / DEC ± 4 PLC / DEC ± ANGLES / ANGOLI ±2		APVD / APP. A. GENTA 04MAR99	
MATERIAL: SEE TABLE / MATERIALE: VEDI TABELLA		PRODUCT SPEC 108-20175	SIZE: A3
FINISH: / FINITURA:		APPLICATION SPEC 114-20095	CAGE CODE: 00779
WEIGHT / PESO: 7.0 g		DRAWING NO: C=282992	SCALE: 2:1
CUSTOMER DRAWING / DISEGNO PER CLIENTE SOLO PER RIFERIMENTO		SHEET: 1 OF 2	REV: B

P	LTR	DESCRIPTION	DATE	DWN	APVD
-		SEE SHEET 1			

P/N	ITEM 1-2 COLOR (COLORE)	PART REV	GRAPHIC REPRESENTATION MATING FACE (RAPPRESENTAZIONE GRAFICA LATO ACCOPPIAMENTO)	P/N FREE HANGING COUNTERPART (CONTROPARTE VOLANTE)
282992-1	WHITE (BIANCO)	B		282989-1
282992-2	BLACK (NERO)	B		282989-2
282992-3	BLUE (BLU)	B		282989-3
282992-4	GREY (GRIGIO)	B		282989-4

<small>THIS DRAWING IS A CONTROLLED DOCUMENT FOR AMP INCORPORATED. IT IS SUBJECT TO CHANGE AND THE CONTROLLING ENGINEERING ORGANIZATION SHOULD BE CONTACTED FOR THE LATEST REVISION.</small>		DWN A. MARANGON 04MAR99 CHK O. CANUTO 04MAR99 APVD A. GENTA 04MAR99	AMP AMP Italia S.p.A. C.so F.lli Cervi 15 Collegno (TO)
DIMENSIONS: mm 	TOLERANCES UNLESS OTHERWISE SPECIFIED: 0 PLC ±0.3 1 PLC ±0.3 2 PLC ±0.3 3 PLC ± 4 PLC ± ANGLES ±30°	PRODUCT SPEC SEE SHEET1 (VEDERE FOGLIO1) APPLICATION SPEC SEE SHEET1 (VEDERE FOGLIO1) WEIGHT SEE SHEET1 (VEDERE FOGLIO1)	NAME 6 POS. NEW GENERATION TAB CONNECTOR for trucks SIZE A3
MATERIAL SEE SHEET1 (VEDERE FOGLIO1)	FINISH - -	CAGE CODE 00779	DRAWING NO C-282992 RESTRICTED TO -
CUSTOMER DRAWING		SCALE 2:1	SHEET 2 OF 2 REV B