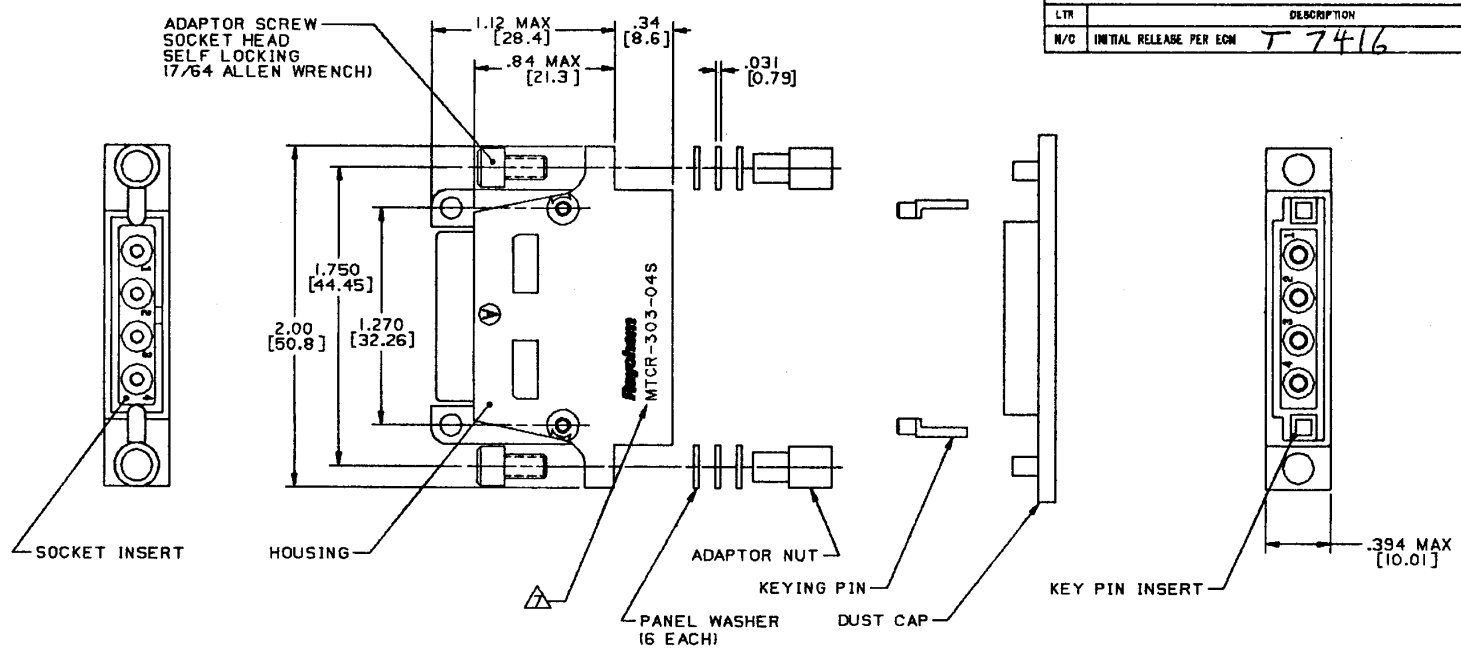


7 3 2 1

REVISIONS			
LTR	DESCRIPTION	DATE	APPROVED
N/C	INITIAL RELEASE PER ECM	T 7416	12/3/84 JS



- NOTES:
1. THIS PART IS DESIGNED TO MEET THE REQUIREMENTS OF RAYCHEM SPECIFICATION C-6115. QUALIFICATION IS PENDING.
 2. MATERIAL: MATERIALS ARE IN ACCORDANCE WITH RAYCHEM SPECIFICATION C-6115.
 3. FINISH: FINISHES ARE IN ACCORDANCE WITH RAYCHEM SPECIFICATION C-6115.
 4. FOR MOUNTING / MATING AND KEYING INFORMATION, SEE RAYCHEM DRAWING D652-0012
 5. THE FOLLOWING MOUNTING AND MATING HARDWARE IS SUPPLIED NOT INSTALLED WITH EACH RECEPTACLE:
 - A) (2) KEYING PINS
 - B) (2) ADAPTOR SCREWS
 - C) (2) ADAPTOR NUTS
 - D) (6) PANEL WASHERS
 6. DUST CAP SUPPLIED INSTALLED WITH EACH RECEPTACLE
 7. RAYCHEM, PART NO. MTCR-303-04S, AND DATE CODE ARE STAMPED APPROXIMATELY AS SHOWN.
 8. CONNECTOR ACCOMODATES CONTACTS PER TABLE 1.
 9. INSERT IS PERMANENTLY INSTALLED.
 10. CONTACTS ARE INSERTED AND REMOVED USING TOOL NUMBER M81969/14-04.
 11. UNUSED CAVITIES ARE TO BE SEALED USING SEALING PLUG NUMBER MS27488-12.
 12. TOLERANCES: UNLESS OTHERWISE SPECIFIED
 - .XXX ± .005 [\pm .13]
 - .XX ± .02 [\pm .5]

SOCKET CONTACT AND TOOLING INFORMATION

CONTACT TYPE	MILITARY PART NO.	WIRE STRIP LENGTH	TERMINATION TOOL
SHIELDED CONTACT FOR COAX CABLE D-602-0107 OR D-602-0095		SEE DRAWING D-602-0107 OR D-602-0095	SEE DRAWING D-602-0107 OR D-602-0095
CONTACT FOR TWISTED PAIR D-602-0105		SEE DRAWING D-602-0105	SEE DRAWING D-602-0105
POWER CONTACT SIZE 12	M39029/5-12-12	1/4" TO 5/16"	M22520/1-01 POSITIONER M22520/1-02

13. WEIGHT: .055 lbs [24.95 g]

If this document is printed it becomes uncontrolled. Check with the web for latest revision.

SPECIFICATION CONTROL DRAWING © Raychem Corporation 1985

<table border="1"> <tr> <td>DRAWN</td> <td>D.J.K.</td> <td>11-21-85</td> </tr> <tr> <td>CHECKED</td> <td>JS</td> <td></td> </tr> <tr> <td>APPROVED</td> <td>Blain</td> <td>11-25-86</td> </tr> <tr> <td>APPROVED</td> <td>Harmon</td> <td>12-4-86</td> </tr> </table>	DRAWN	D.J.K.	11-21-85	CHECKED	JS		APPROVED	Blain	11-25-86	APPROVED	Harmon	12-4-86	<p>Raychem</p> <p>RAYCHEM CORPORATION 300 CONSTITUTION DRIVE MENLO PARK, CALIFORNIA 94025</p> <p>CONNECTOR, RECEPTACLE, FLANGELESS, 1" CADMIUM PLATED, FIXED SOCKET INSERT EME CLASS, MTC SERIES</p>
DRAWN	D.J.K.	11-21-85											
CHECKED	JS												
APPROVED	Blain	11-25-86											
APPROVED	Harmon	12-4-86											
<p>UNLESS OTHERWISE SPECIFIED DIMENSIONS ARE IN INCHES. METRIC DIMENSIONS ARE IN PARENTHESIS</p>	<table border="1"> <tr> <td>SIZE</td> <td>CODE IDENT. NO.</td> <td>DWG NO.</td> </tr> <tr> <td>C</td> <td>06090</td> <td>MTCR-303-04S</td> </tr> </table>	SIZE	CODE IDENT. NO.	DWG NO.	C	06090	MTCR-303-04S						
SIZE	CODE IDENT. NO.	DWG NO.											
C	06090	MTCR-303-04S											
DO NOT SCALE THIS DRAWING	<table border="1"> <tr> <td>WEIGHT</td> <td>SHEET 1 OF 1</td> </tr> </table>	WEIGHT	SHEET 1 OF 1										
WEIGHT	SHEET 1 OF 1												