

# 2.5V or 3.3V, 200-MHz, 14 Output Zero Delay Buffer

## Features

- Output frequency range: 8.3 MHz to 200 MHz
- Input frequency range: 4.2 MHz to 125 MHz
- 2.5V or 3.3V operation
- Split 2.5V/3.3V outputs
- 14 Clock outputs: Drive up to 28 clock lines
- 1 Feedback clock output
- 2 LVCMOS reference clock inputs
- 150 ps max output-output skew
- PLL bypass mode
- Spread Aware™
- Output enable/disable
- Industrial temperature range: -40°C to +85°C
- 52-Pin 1.0-mm TQFP package

## Description

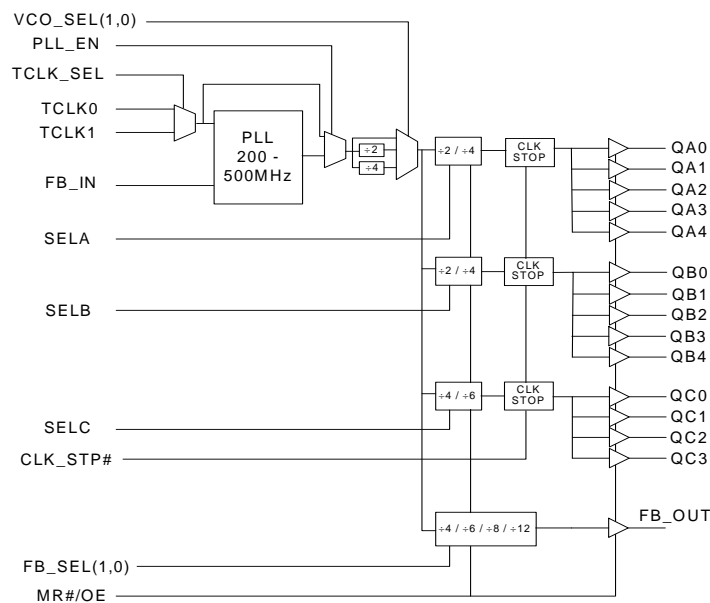
The CY29775 is a low-voltage high-performance 200-MHz PLL-based zero delay buffer designed for high-speed clock distribution applications.

The CY29775 features two reference clock inputs and provides 14 outputs partitioned in 3 banks of 5, 5, and 4 outputs. Bank A and Bank B divide the VCO output by 4 or 8 while Bank C divides by 8 or 12 per SEL(A:C) settings, see [Function Table \(Bank A, B, and C\) on page 4](#). These dividers allow output to input ratios of 6:1, 4:1, 3:1, 2:1, 3:2, 4:3, 1:1, and 2:3. Each LVCMOS compatible output can drive 50Ω series or parallel terminated transmission lines. For series terminated transmission lines, each output can drive one or two traces giving the device an effective fanout of 1:28.

The PLL is ensured stable given that the VCO is configured to run between 200 MHz to 500 MHz. This allows a wide range of output frequencies from 8.3 MHz to 200 MHz. For normal operation, the external feedback input, FB\_IN, is connected to the feedback output, FB\_OUT. The internal VCO is running at multiples of the input reference clock set by the feedback divider, see [Frequency Table on page 4](#).

When PLL\_EN is LOW, PLL is bypassed and the reference clock directly feeds the output dividers. This mode is fully static and the minimum input clock frequency specification does not apply.

## Block Diagram



Pinouts

Figure 1. Pin Diagram - 52-Pin 1.0-mm TQFP package

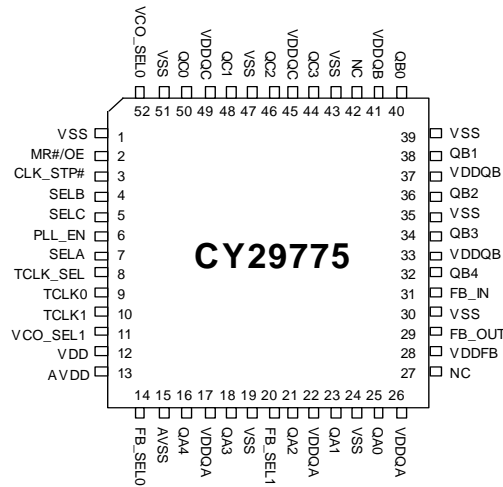


Table 1. Pin Definition - 52-Pin 1.0-mm TQFP package

| Pin <sup>[1]</sup> | Name         | IO     | Type    | Description  |
|--------------------|--------------|--------|---------|--|
| 9                  | TCLK0        | I, PD  | LVC MOS | LVC MOS/LVTTL reference clock input  |
| 10                 | TCLK1        | I, PU  | LVC MOS | LVC MOS/LVTTL reference clock input  |
| 16, 18, 21, 23, 25 | QA(4:0)      | O      | LVC MOS | Clock output bank A  |
| 32, 34, 36, 38, 40 | QB(4:0)      | O      | LVC MOS | Clock output bank B  |
| 44, 46, 48, 50     | QC(3:0)      | O      | LVC MOS | Clock output bank C  |
| 29                 | FB_OUT       | O      | LVC MOS | <b>Feedback clock output.</b> Connect to FB_IN for normal operation.   |
| 31                 | FB_IN        | I, PU  | LVC MOS | <b>Feedback clock input.</b> Connect to FB_OUT for normal operation. This input must be at the same voltage rail as input reference clock. See <i>Table 2</i> on page 4. |
| 2                  | MR#/OE       | I, PU  | LVC MOS | <b>Output enable/disable input.</b> See <i>Table 3</i> on page 4.  |
| 3                  | CLK_STP#     | I, PU  | LVC MOS | <b>Clock stop enable/disable input.</b> See <i>Table 3</i> on page 4.  |
| 6                  | PLL_EN       | I, PU  | LVC MOS | <b>PLL enable/disable input.</b> See <i>Table 3</i> on page 4.   |
| 8                  | TCLK_SEL     | I, PD  | LVC MOS | <b>Reference select input.</b> See <i>Table 3</i> on page 4.   |
| 11, 52             | VCO_SEL(1,0) | I, PD  | LVC MOS | <b>VCO divider select input.</b> See <i>Tables 3, 4 and 5.</i>   |
| 7, 4, 5            | SEL(A:C)     | I, PD  | LVC MOS | <b>Frequency select input, Bank (A:C).</b> See <i>Table 4</i> on page 4.   |
| 20, 14             | FB_SEL(1,0)  | I, PD  | LVC MOS | <b>Feedback dividers select inputs.</b> See <i>Table 5</i> on page 5.  |
| 17, 22, 26         | VDDQA        | Supply | VDD     | 2.5V or 3.3V Power supply for bank A output clocks <sup>[2,3]</sup>  |
| 33, 37, 41         | VDDQB        | Supply | VDD     | 2.5V or 3.3V Power supply for bank B output clocks <sup>[2,3]</sup>  |

Notes

1. PU = Internal pull up, PD = Internal pull down
2. A 0.1-μF bypass capacitor must be placed as close as possible to each positive power pin (<0.2"). If these bypass capacitors are not close to the pins their high frequency filtering characteristics is cancelled by the lead inductance of the traces.
3. AVDD and VDD pins must be connected to a power supply level that is at least equal or higher than that of VDDQA, VDDQB, VDDQC, and VDDFB power supply pins.

**Table 1. Pin Definition - 52-Pin 1.0-mm TQFP package (Continued)**

| Pin <sup>[1]</sup>                      | Name  | IO     | Type   | Description  |
|---|-------|--------|--------|--|
| 45, 49                                  | VDDQC | Supply | VDD    | 2.5V or 3.3V Power supply for bank C output clocks <sup>[2,3]</sup>  |
| 28                                      | VDDFB | Supply | VDD    | 2.5V or 3.3V Power supply for feedback output clock <sup>[2,3]</sup> |
| 13                                      | AVDD  | Supply | VDD    | 2.5V or 3.3V Power supply for PLL <sup>[2,3]</sup>                   |
| 12                                      | VDD   | Supply | VDD    | 2.5V or 3.3V Power supply for core and inputs <sup>[2,3]</sup>       |
| 15                                      | AVSS  | Supply | Ground | Analog Ground  |
| 1, 19, 24,<br>30, 35, 39,<br>43, 47, 51 | VSS   | Supply | Ground | Common Ground  |
| 27, 42                                  | NC    |        |        | No Connection  |

**Table 2. Frequency Table**

| Feedback Output Divider | VCO              | Input Frequency Range (AVDD = 3.3V) | Input Frequency Range (AVDD = 2.5V) |
|-------------------------|------------------|-------------------------------------|-------------------------------------|
| ÷8                      | Input Clock * 8  | 25 MHz to 62.5 MHz                  | 25 MHz to 50 MHz                    |
| ÷12                     | Input Clock * 12 | 16.6 MHz to 41.6 MHz                | 16.6 MHz to 33.3 MHz                |
| ÷16                     | Input Clock * 16 | 12.5 MHz to 31.25 MHz               | 12.5 MHz to 25 MHz                  |
| ÷24                     | Input Clock * 24 | 8.3 MHz to 20.8 MHz                 | 8.3 MHz to 16.6 MHz                 |
| ÷32                     | Input Clock * 32 | 6.25 MHz to 15.625 MHz              | 6.25 MHz to 12.5 MHz                |
| ÷48                     | Input Clock * 48 | 4.2 MHz to 10.4 MHz                 | 4.2 MHz to 8.3 MHz                  |
| ÷4                      | Input Clock * 4  | 50 MHz to 125 MHz                   | 50 MHz to 100 MHz                   |
| ÷6                      | Input Clock * 6  | 33.3 MHz to 83.3 MHz                | 33.3 MHz to 66.6 MHz                |
| ÷8                      | Input Clock * 8  | 25 MHz to 62.5 MHz                  | 25 MHz to 50 MHz                    |
| ÷12                     | Input Clock * 12 | 16.6 MHz to 41.6 MHz                | 16.6 MHz to 33.3 MHz                |

**Table 3. Function Table (configuration controls)**

| Control  | Default | 0   | 1   |
|----------|---------|---|---|
| TCLK_SEL | 0       | TCLK0   | TCLK1   |
| VCO_SEL0 | 0       | VCO÷2 (mid input frequency range)   | VCO÷4 (low input frequency range)                           |
| VCO_SEL1 | 0       | Gated by VCO_SEL0   | VCO (high input frequency range)                            |
| PLL_EN   | 1       | Bypass mode, PLL disabled. The input clock connects to the output dividers  | PLL enabled. The VCO output connects to the output dividers |
| MR#/OE   | 1       | Outputs disabled (three-state) and reset of the device. During reset/output disable the PLL feedback loop is open and the VCO running at its minimum frequency. The device is reset by the internal power on reset (POR) circuitry during power up. | Outputs enabled   |
| CLK_STP# | 1       | QA, QB, and QC outputs disabled in LOW state. FB_OUT is not affected by CLK_STP#.   | Outputs enabled   |

**Table 4. Function Table (Bank A, B, and C)**

| VCO_SEL1 | VCO_SEL0 | SELA | QA(4:0) | SELB | QB(4:0) | SELC | QC(3:0) |
|----------|----------|------|---------|------|---------|------|---------|
| 0        | 0        | 0    | ÷4      | 0    | ÷4      | 0    | ÷8      |
| 0        | 0        | 1    | ÷8      | 1    | ÷8      | 1    | ÷12     |
| 0        | 1        | 0    | ÷8      | 0    | ÷8      | 0    | ÷16     |
| 0        | 1        | 1    | ÷16     | 1    | ÷16     | 1    | ÷24     |
| 1        | x        | 0    | ÷2      | 0    | ÷2      | 0    | ÷4      |
| 1        | x        | 1    | ÷4      | 1    | ÷4      | 1    | ÷6      |

**Table 5. Function Table (FB\_OUT)**

| VCO_SEL1 | VCO_SEL0 | FB_SEL1 | FB_SEL0 | FB_OUT |
|----------|----------|---------|---------|--------|
| 0        | 0        | 0       | 0       | ÷8     |
| 0        | 0        | 0       | 1       | ÷16    |
| 0        | 0        | 1       | 0       | ÷12    |
| 0        | 0        | 1       | 1       | ÷24    |
| 0        | 1        | 0       | 0       | ÷16    |
| 0        | 1        | 0       | 1       | ÷32    |
| 0        | 1        | 1       | 0       | ÷24    |
| 0        | 1        | 1       | 1       | ÷48    |
| 1        | x        | 0       | 0       | ÷4     |
| 1        | x        | 0       | 1       | ÷8     |
| 1        | x        | 1       | 0       | ÷6     |
| 1        | x        | 1       | 1       | ÷12    |

**Absolute Maximum Conditions**

| Parameter        | Description                       | Condition                   | Min   | Max                   | Unit  |
|------------------|-----------------------------------|-----------------------------|-------|-----------------------|-------|
| V <sub>DD</sub>  | DC Supply Voltage                 |                             | -0.3  | 5.5                   | V     |
| V <sub>DD</sub>  | DC Operating Voltage              | Functional                  | 2.375 | 3.465                 | V     |
| V <sub>IN</sub>  | DC Input Voltage                  | Relative to V <sub>SS</sub> | -0.3  | V <sub>DD</sub> + 0.3 | V     |
| V <sub>OUT</sub> | DC Output Voltage                 | Relative to V <sub>SS</sub> | -0.3  | V <sub>DD</sub> + 0.3 | V     |
| V <sub>TT</sub>  | Output termination Voltage        |                             | -     | V <sub>DD</sub> ÷ 2   | V     |
| LU               | Latch Up Immunity                 | Functional                  | 200   | -                     | mA    |
| R <sub>PS</sub>  | Power Supply Ripple               | Ripple Frequency < 100 kHz  | -     | 150                   | mVp-p |
| T <sub>S</sub>   | Temperature, Storage              | Non Functional              | -65   | +150                  | °C    |
| T <sub>A</sub>   | Temperature, Operating Ambient    | Functional                  | -40   | +85                   | °C    |
| T <sub>J</sub>   | Temperature, Junction             | Functional                  | -     | 150                   | °C    |
| ∅ <sub>JC</sub>  | Dissipation, Junction to Case     | Functional                  | -     | 23                    | °C/W  |
| ∅ <sub>JA</sub>  | Dissipation, Junction to Ambient  | Functional                  | -     | 55                    | °C/W  |
| ESD <sub>H</sub> | ESD Protection (Human Body Model) |                             | 2000  | -                     | Volts |
| FIT              | Failure in Time                   | Manufacturing test          |       | 10                    | ppm   |

**DC Electrical Specifications** ( $V_{DD} = 3.3V \pm 5\%$ ,  $T_A = -40^\circ C$  to  $+85^\circ C$ )

| Parameter | Description                         | Condition                          | Min | Typ. | Max            | Unit     |
|-----------|-------------------------------------|------------------------------------|-----|------|----------------|----------|
| $V_{IL}$  | Input Voltage, Low                  | LVC MOS                            | –   | –    | 0.8            | V        |
| $V_{IH}$  | Input Voltage, High                 | LVC MOS                            | 2.0 | –    | $V_{DD} + 0.3$ | V        |
| $V_{OL}$  | Output Voltage, Low <sup>[4]</sup>  | $I_{OL} = 24$ mA                   | –   | –    | 0.55           | V        |
|           |                                     | $I_{OL} = 12$ mA                   | –   | –    | 0.30           |          |
| $V_{OH}$  | Output Voltage, High <sup>[4]</sup> | $I_{OH} = -24$ mA                  | 2.4 | –    | –              | V        |
| $I_{IL}$  | Input Current, Low <sup>[5]</sup>   | $V_{IL} = V_{SS}$                  | –   | –    | –100           | $\mu A$  |
| $I_{IH}$  | Input Current, High <sup>[5]</sup>  | $V_{IL} = V_{DD}$                  | –   | –    | 100            | $\mu A$  |
| $I_{DDA}$ | PLL Supply Current                  | $A_{VDD}$ only                     | –   | 5    | 10             | mA       |
| $I_{DDQ}$ | Quiescent Supply Current            | All $V_{DD}$ pins except $A_{VDD}$ | –   | –    | 1              | mA       |
| $I_{DD}$  | Dynamic Supply Current              | Outputs loaded at 100 MHz          | –   | 225  | –              | mA       |
|           |                                     | Outputs loaded at 200 MHz          | –   | 290  | –              |          |
| $C_{IN}$  | Input Pin Capacitance               |                                    | –   | 4    | –              | pF       |
| $Z_{OUT}$ | Output Impedance                    |                                    | 12  | 15   | 18             | $\Omega$ |

**DC Electrical Specifications** ( $V_{DD} = 2.5V \pm 5\%$ ,  $T_A = -40^\circ C$  to  $+85^\circ C$ )

| Parameter | Description                         | Condition                          | Min | Typ. | Max            | Unit     |
|-----------|-------------------------------------|------------------------------------|-----|------|----------------|----------|
| $V_{IL}$  | Input Voltage, Low                  | LVC MOS                            | –   | –    | 0.7            | V        |
| $V_{IH}$  | Input Voltage, High                 | LVC MOS                            | 1.7 | –    | $V_{DD} + 0.3$ | V        |
| $V_{OL}$  | Output Voltage, Low <sup>[4]</sup>  | $I_{OL} = 15$ mA                   | –   | –    | 0.6            | V        |
| $V_{OH}$  | Output Voltage, High <sup>[4]</sup> | $I_{OH} = -15$ mA                  | 1.8 | –    | –              | V        |
| $I_{IL}$  | Input Current, Low <sup>[5]</sup>   | $V_{IL} = V_{SS}$                  | –   | –    | –100           | $\mu A$  |
| $I_{IH}$  | Input Current, High <sup>[5]</sup>  | $V_{IL} = V_{DD}$                  | –   | –    | 100            | $\mu A$  |
| $I_{DDA}$ | PLL Supply Current                  | $A_{VDD}$ only                     | –   | 5    | 10             | mA       |
| $I_{DDQ}$ | Quiescent Supply Current            | All $V_{DD}$ pins except $A_{VDD}$ | –   | –    | 1              | mA       |
| $I_{DD}$  | Dynamic Supply Current              | Outputs loaded at 100 MHz          | –   | 135  | –              | mA       |
|           |                                     | Outputs loaded at 200 MHz          | –   | 160  | –              |          |
| $C_{IN}$  | Input Pin Capacitance               |                                    | –   | 4    | –              | pF       |
| $Z_{OUT}$ | Output Impedance                    |                                    | 14  | 18   | 22             | $\Omega$ |

**Notes**

4. Driving one 50 $\Omega$  parallel terminated transmission line to a termination voltage of  $V_{TT}$ . Alternatively, each output drives up to two 50 $\Omega$  series terminated transmission lines.
5. Inputs have pull up or pull down resistors that affect the input current

**AC Electrical Specifications** ( $V_{DD} = 2.5V \pm 5\%$ ,  $T_A = -40^{\circ}C$  to  $+85^{\circ}C$ )

| Parameter <sup>[6]</sup> | Description                             | Condition                              | Min  | Typ.      | Max  | Unit |
|--------------------------|---|--|------|-----------|------|------|
| $f_{VCO}$                | VCO Frequency                           |  | 200  | –         | 400  | MHz  |
| $f_{in}$                 | Input Frequency                         | $\pm 4$ Feedback                       | 50   | –         | 100  | MHz  |
|                          |   | $\pm 6$ Feedback                       | 33.3 | –         | 66.6 |      |
|                          |   | $\pm 8$ Feedback                       | 25   | –         | 50   |      |
|                          |   | $\pm 12$ Feedback                      | 16.7 | –         | 33.3 |      |
|                          |   | $\pm 16$ Feedback                      | 12.5 | –         | 25   |      |
|                          |   | $\pm 24$ Feedback                      | 8.3  | –         | 16.7 |      |
|                          |   | $\pm 32$ Feedback                      | 6.3  | –         | 12.5 |      |
|                          |   | $\pm 48$ Feedback                      | 4.2  | –         | 8.3  |      |
|                          | Bypass mode (PLL_EN = 0)                | 0                                      | –    | 200       |      |      |
| $f_{refDC}$              | Input Duty Cycle                        |  | 25   | –         | 75   | %    |
| $t_r, t_f$               | TCLK Input Rise/FallTime                | 0.7V to 1.7V                           | –    | –         | 1.0  | ns   |
| $f_{MAX}$                | Maximum Output Frequency                | $\pm 2$ Output                         | 100  | –         | 200  | MHz  |
|                          |   | $\pm 4$ Output                         | 50   | –         | 100  |      |
|                          |   | $\pm 6$ Output                         | 33.3 | –         | 66.6 |      |
|                          |   | $\pm 8$ Output                         | 25   | –         | 50   |      |
|                          |   | $\pm 12$ Output                        | 16.7 | –         | 33.3 |      |
|                          |   | $\pm 16$ Output                        | 12.5 | –         | 25   |      |
|                          |   | $\pm 24$ Output                        | 8.3  | –         | 16.7 |      |
| DC                       | Output Duty Cycle                       |  | 45   | –         | 55   | %    |
| $t_r, t_f$               | Output Rise/Fall times                  | 0.7V to 1.8V                           | 0.1  | –         | 1.0  | ns   |
| $t_{(\phi)}$             | Propagation Delay (static phase offset) | TCLK to FB_IN, does not include jitter | –100 | –         | 100  | ps   |
| $t_{sk(O)}$              | Output-to-Output Skew                   | Skew within Bank                       | –    | –         | 150  | ps   |
| $t_{sk(B)}$              | Bank-to-Bank Skew                       | Banks at same frequency                | –    | –         | 150  | ps   |
|                          |   | Banks at different frequency           | –    | –         | 225  |      |
| $t_{PLZ, HZ}$            | Output Disable Time                     |  | –    | –         | 10   | ns   |
| $t_{PZL, ZH}$            | Output Enable Time                      |  | –    | –         | 10   | ns   |
| BW                       | PLL Closed Loop Bandwidth (–3 dB)       | VCO_SEL = 0                            | –    | 0.5 - 1.0 | –    | MHz  |
|                          |   | VCO_SEL = 1                            | –    | 1.0 - 2.0 | –    |      |
| $t_{JIT(CC)}$            | Cycle-to-Cycle Jitter                   | Same frequency                         | –    | –         | 150  | ps   |
|                          |   | Multiple frequencies                   | –    | –         | 300  |      |
| $t_{JIT(PER)}$           | Period Jitter                           |  | –    | –         | 100  | ps   |
| $t_{JIT(\phi)}$          | IO Phase Jitter                         |  | –    | –         | 150  | ps   |
| $t_{LOCK}$               | Maximum PLL Lock Time                   |  | –    | –         | 1    | ms   |

**Note**

6. AC characteristics apply for parallel output termination of  $50\Omega$  to  $V_{TT}$ . Parameters are guaranteed by characterization and are not 100% tested.

**AC Electrical Specifications** ( $V_{DD} = 3.3V \pm 5\%$ ,  $T_A = -40^{\circ}C$  to  $+85^{\circ}C$ )

| Parameter <sup>[6]</sup> | Description                             | Condition  | Min  | Typ.      | Max  | Unit |
|--------------------------|---|--|------|-----------|------|------|
| $f_{VCO}$                | VCO Frequency                           |  | 200  | –         | 500  | MHz  |
| $f_{in}$                 | Input Frequency                         | $\pm 4$ Feedback                                       | 50   | –         | 125  | MHz  |
|                          |   | $\pm 6$ Feedback                                       | 33.3 | –         | 83.3 |      |
|                          |   | $\pm 8$ Feedback                                       | 25   | –         | 62.5 |      |
|                          |   | $\pm 12$ Feedback                                      | 16.7 | –         | 41.6 |      |
|                          |   | $\pm 16$ Feedback                                      | 12.5 | –         | 31.3 |      |
|                          |   | $\pm 24$ Feedback                                      | 8.3  | –         | 20.8 |      |
|                          |   | $\pm 32$ Feedback                                      | 6.3  | –         | 15.6 |      |
|                          |   | $\pm 48$ Feedback                                      | 4.2  | –         | 10.4 |      |
|                          |   | Bypass mode (PLL_EN = 0)                               | 0    | –         | 200  |      |
| $f_{refDC}$              | Input Duty Cycle                        |  | 25   | –         | 75   | %    |
| $t_r, t_f$               | TCLK Input Rise/FallTime                | 0.8V to 2.0V   | –    | –         | 1.0  | ns   |
| $f_{MAX}$                | Maximum Output Frequency                | $\pm 2$ Output   | 100  | –         | 200  | MHz  |
|                          |   | $\pm 4$ Output   | 50   | –         | 125  |      |
|                          |   | $\pm 6$ Output   | 33.3 | –         | 83.3 |      |
|                          |   | $\pm 8$ Output   | 25   | –         | 62.5 |      |
|                          |   | $\pm 12$ Output  | 16.7 | –         | 41.6 |      |
|                          |   | $\pm 16$ Output  | 12.5 | –         | 31.3 |      |
|                          |   | $\pm 24$ Output  | 8.3  | –         | 20.8 |      |
| DC                       | Output Duty Cycle                       |  | 45   | –         | 55   | %    |
| $t_r, t_f$               | Output Rise/Fall times                  | 0.8V to 2.4V   | 0.1  | –         | 1.0  | ns   |
| $t_{(\phi)}$             | Propagation Delay (static phase offset) | TCLK to FB_IN, same $V_{DD}$ , does not include jitter | –100 | –         | 100  | ps   |
| $t_{sk(O)}$              | Output-to-Output Skew                   | Skew within Bank                                       | –    | –         | 150  | ps   |
| $t_{sk(B)}$              | Bank-to-Bank Skew                       | Banks at same voltage, same frequency                  | –    | –         | 150  | ps   |
|                          |   | Banks at same voltage, different frequency             | –    | –         | 225  |      |
|                          |   | Banks at different voltage                             | –    | –         | 250  |      |
| $t_{PLZ, HZ}$            | Output Disable Time                     |  | –    | –         | 10   | ns   |
| $t_{PZL, ZH}$            | Output Enable Time                      |  | –    | –         | 10   | ns   |
| BW                       | PLL Closed Loop Bandwidth (–3dB)        | VCO_SEL = 0  | –    | 0.5 - 1.0 | –    | MHz  |
|                          |   | VCO_SEL = 1  | –    | 1.0 - 2.0 | –    |      |
| $t_{JIT(CC)}$            | Cycle-to-Cycle Jitter                   | Same frequency   | –    | –         | 150  | ps   |
|                          |   | Multiple frequencies                                   | –    | –         | 300  |      |
| $t_{JIT(PER)}$           | Period Jitter                           |  | –    | –         | 100  | ps   |
| $t_{JIT(\phi)}$          | IO Phase Jitter                         | IO at same $V_{DD}$                                    | –    | –         | 150  | ps   |
| $t_{LOCK}$               | Maximum PLL Lock Time                   |  | –    | –         | 1    | ms   |



Figure 2. AC Test Reference for  $V_{DD} = 3.3V / 2.5V$

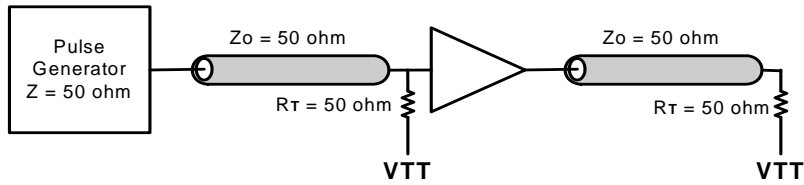


Figure 3. Propagation Delay  $t(\phi)$ , Static Phase Offset

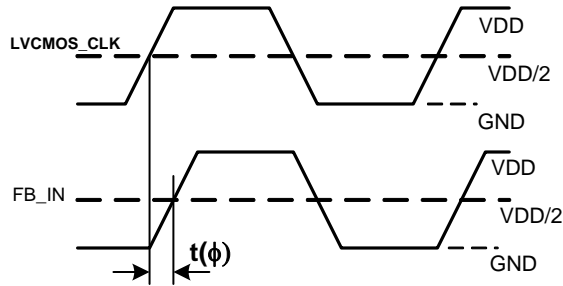


Figure 4. Output Duty Cycle (DC)

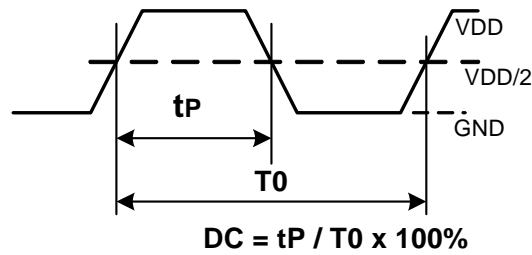
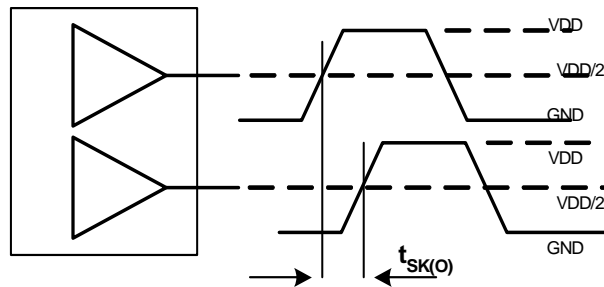


Figure 5. Output-to-Output Skew,  $t_{sk(O)}$

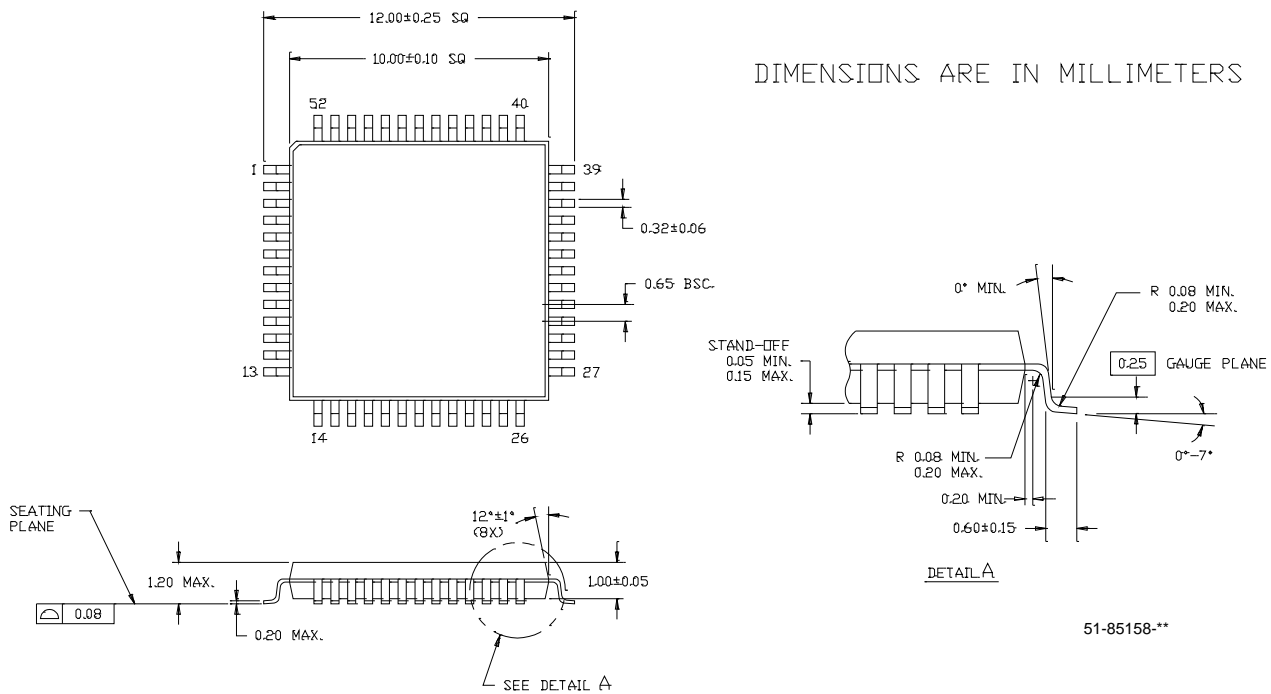


Ordering Information

| Part Number | Package Type               | Product Flow               | Status   |
|-------------|----------------------------|----------------------------|----------|
| CY29775AI   | 52-pin TQFP                | Industrial, -40°C to +85°C | Obsolete |
| CY29775AIT  | 52-pin TQFP -Tape and Reel | Industrial, -40°C to 85°C  | Obsolete |
| Pb-free     |                            |                            |          |
| CY29775AXI  | 52-pin TQFP                | Industrial, -40°C to +85°C | Active   |
| CY29775AXIT | 52-pin TQFP -Tape and Reel | Industrial, -40°C to 85°C  | Active   |

Package Drawing and Dimension

Figure 6. 52-Lead Thin Plastic Quad Flat Pack (10 x 10 x 1.0 mm) A52B



## Document History Page

| Document Title:CY29775 2.5V or 3.3V, 200-MHz, 14 Output Zero Delay Buffer<br>Document #: 38-07480 |         |            |                 |  |
|---|---------|------------|-----------------|--|
| Rev.  | ECN No. | Issue Date | Orig. of Change | Description of Change                                |
| **  | 125955  | 04/29/03   | RGL             | New Data Sheet                                       |
| *A  | 1875214 | See ECN    | WWZ/AESA        | Added Pb-free part numbers and updated device status |

© Cypress Semiconductor Corporation, 2003-2007. The information contained herein is subject to change without notice. Cypress Semiconductor Corporation assumes no responsibility for the use of any circuitry other than circuitry embodied in a Cypress product. Nor does it convey or imply any license under patent or other rights. Cypress products are not warranted nor intended to be used for medical, life support, life saving, critical control or safety applications, unless pursuant to an express written agreement with Cypress. Furthermore, Cypress does not authorize its products for use as critical components in life-support systems where a malfunction or failure may reasonably be expected to result in significant injury to the user. The inclusion of Cypress products in life-support systems application implies that the manufacturer assumes all risk of such use and in doing so indemnifies Cypress against all charges.

Any Source Code (software and/or firmware) is owned by Cypress Semiconductor Corporation (Cypress) and is protected by and subject to worldwide patent protection (United States and foreign), United States copyright laws and international treaty provisions. Cypress hereby grants to licensee a personal, non-exclusive, non-transferable license to copy, use, modify, create derivative works of, and compile the Cypress Source Code and derivative works for the sole purpose of creating custom software and or firmware in support of licensee product to be used only in conjunction with a Cypress integrated circuit as specified in the applicable agreement. Any reproduction, modification, translation, compilation, or representation of this Source Code except as specified above is prohibited without the express written permission of Cypress.

Disclaimer: CYPRESS MAKES NO WARRANTY OF ANY KIND, EXPRESS OR IMPLIED, WITH REGARD TO THIS MATERIAL, INCLUDING, BUT NOT LIMITED TO, THE IMPLIED WARRANTIES OF MERCHANTABILITY AND FITNESS FOR A PARTICULAR PURPOSE. Cypress reserves the right to make changes without further notice to the materials described herein. Cypress does not assume any liability arising out of the application or use of any product or circuit described herein. Cypress does not authorize its products for use as critical components in life-support systems where a malfunction or failure may reasonably be expected to result in significant injury to the user. The inclusion of Cypress' product in a life-support systems application implies that the manufacturer assumes all risk of such use and in doing so indemnifies Cypress against all charges.

Use may be limited by and subject to the applicable Cypress software license agreement.