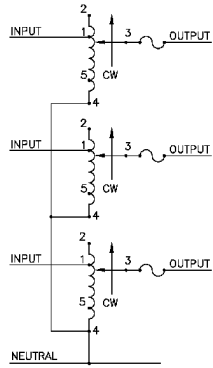
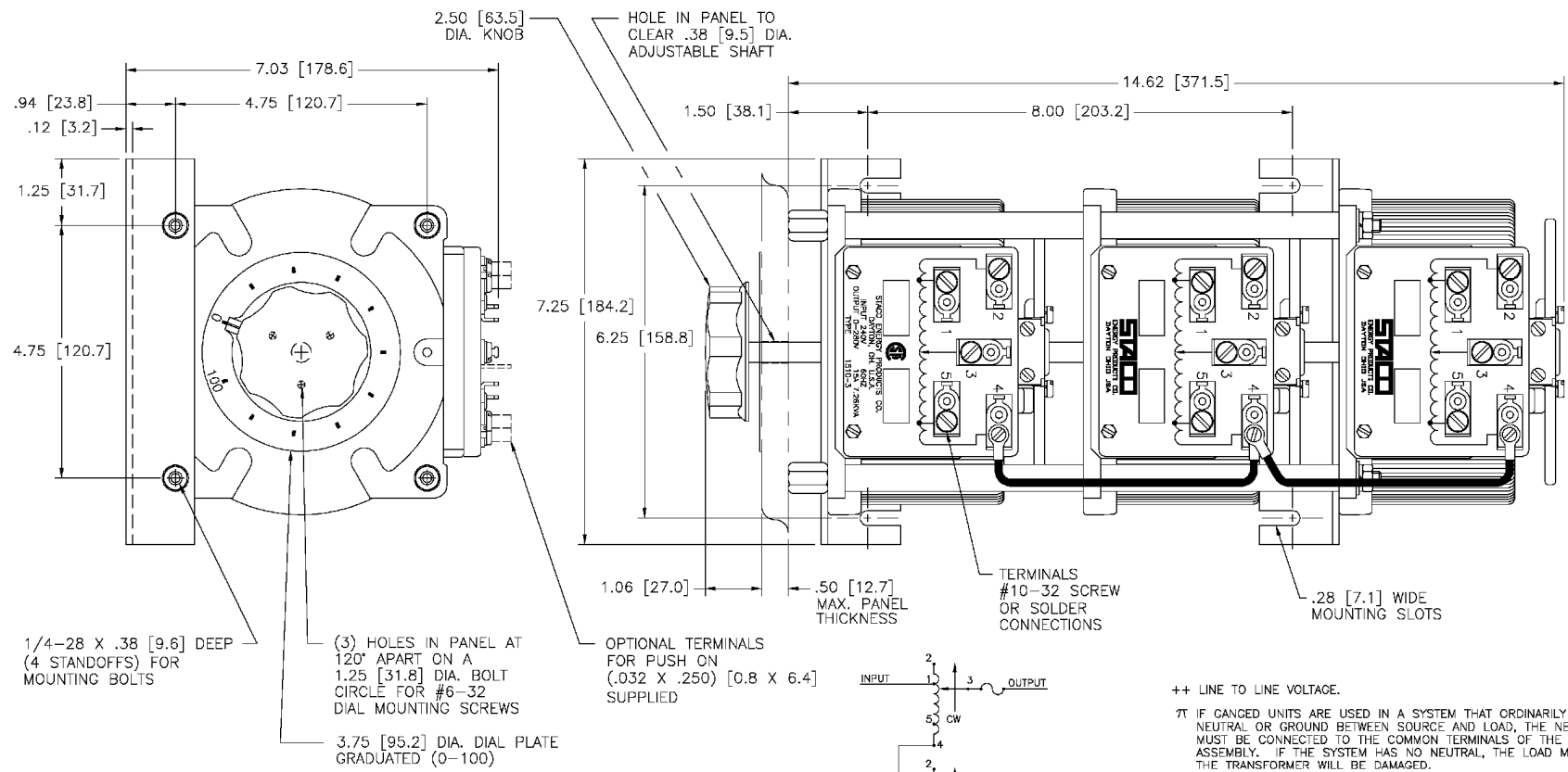


REV. NO.	031-3625		
REV. D	REVISIONS		
REV. A	E.O.L.	DATE	APP.
24892		7/17/02	
REDRAWN TO CAD			
REV. B	25594 [10/25/03]		
MOVED INPUT FROM 5 TO 1			
REV. C	25797 [10/13/06]		
ADDED CSA LOGO			



**SCHEMATIC**  
THREE PHASE WYE  
FUSES RECOMMENDED BUT NOT SUPPLIED

- ++ LINE TO LINE VOLTAGE.
- 7T IF CANGED UNITS ARE USED IN A SYSTEM THAT ORDINARILY HAS A COMMON NEUTRAL OR GROUND BETWEEN SOURCE AND LOAD, THE NEUTRAL OR GROUND MUST BE CONNECTED TO THE COMMON TERMINALS OF THE VARIABLE TRANSFORMER ASSEMBLY. IF THE SYSTEM HAS NO NEUTRAL, THE LOAD MUST BE BALANCED OR THE TRANSFORMER WILL BE DAMAGED.
- JUMPER PROVIDED IN STANDARD COMMON POSITION AND SHOULD BE MOVED OR REMOVED AS REQUIRED.

WIRING	SPECIFICATIONS						TERMINAL CONNECTIONS				
	INPUT		OUTPUT		SHAFT ROTATION TO INCREASE VOLTAGE	FOR INCREASING VOLTAGE AS VIEWED FROM BASE END ■					
	VOLTS	HERTZ	VOLTS	CONSTANT CURRENT LOAD MAX. AMPS MAX. KVA		CONSTANT IMPEDANCE LOAD MAX. AMPS MAX. KVA	INPUT	JUMPER OUTPUT			
THREE PHASE WYE 7T	240	50/60	0-240	15	6.22	20	8.30	CW	2-2-2	4-4-4	3-3-3
			0-280	15	7.26	—	—	CCW	1-1-1	4-4-4	3-3-3
								CCW	5-5-5	2-2-2	3-3-3

UNLESS OTHERWISE SPECIFIED, TOLERANCE IS AS SHOWN IN FIGURE

DATE: 7/17/02

DESIGNER: TIM RAU

CHECKER: DATE:

ENGINEER: DATE:

STACO PRODUCTS CO. 1510-3

WEIGHT APPROX. 55.50 LBS.

SCALE: 1"=1"

SHEET: 1 OF 1

REV. NO. 031-3625

THE INFORMATION ON THESE DRAWINGS IS THE PROPERTY OF STACO ENERGY PRODUCTS CO. AND IS TO BE USED ONLY FOR THE PROJECT AND LOCATION SPECIFICALLY IDENTIFIED THEREON. IT IS TO BE KEPT IN CONFIDENTIALITY AND NOT TO BE REPRODUCED OR TRANSMITTED IN ANY FORM OR BY ANY MEANS, ELECTRONIC OR MECHANICAL, INCLUDING PHOTOCOPYING, RECORDING, OR BY ANY INFORMATION STORAGE AND RETRIEVAL SYSTEM. WITHOUT THE WRITTEN PERMISSION OF STACO ENERGY PRODUCTS CO., THIS INFORMATION IS TO BE KEPT IN CONFIDENTIALITY AND NOT TO BE REPRODUCED OR TRANSMITTED IN ANY FORM OR BY ANY MEANS, ELECTRONIC OR MECHANICAL, INCLUDING PHOTOCOPYING, RECORDING, OR BY ANY INFORMATION STORAGE AND RETRIEVAL SYSTEM.