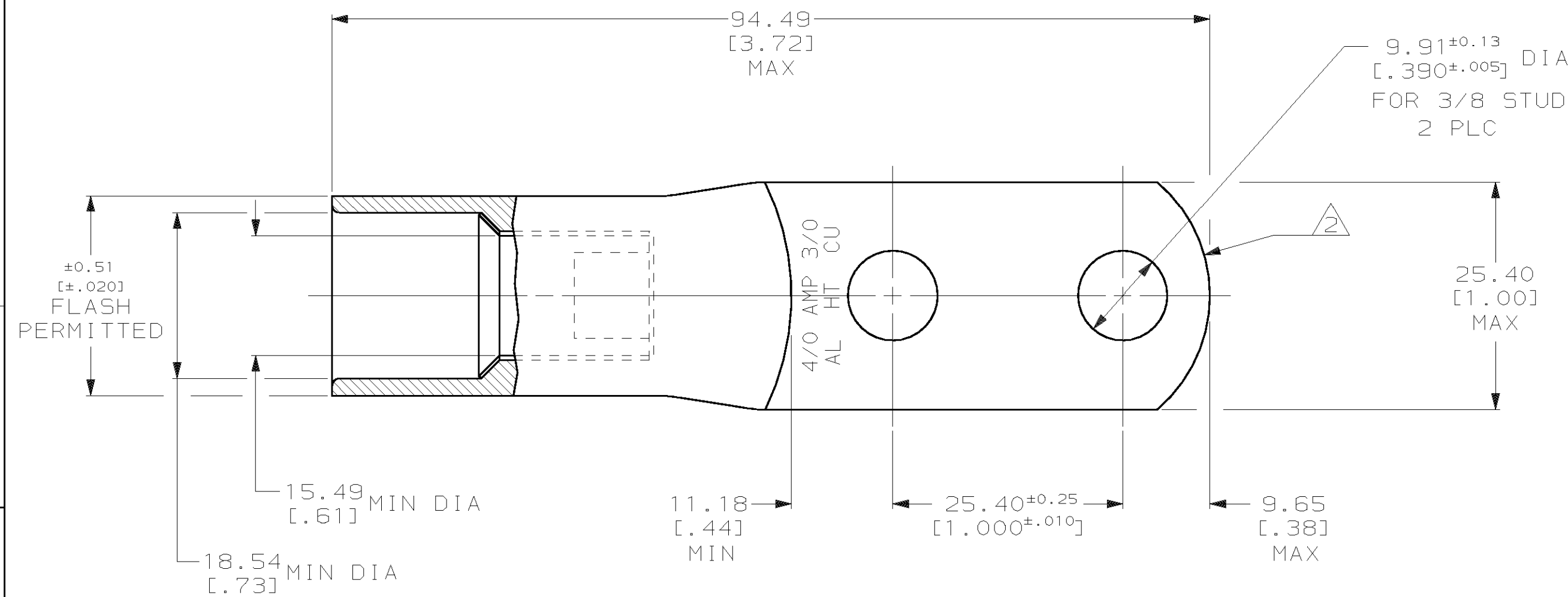
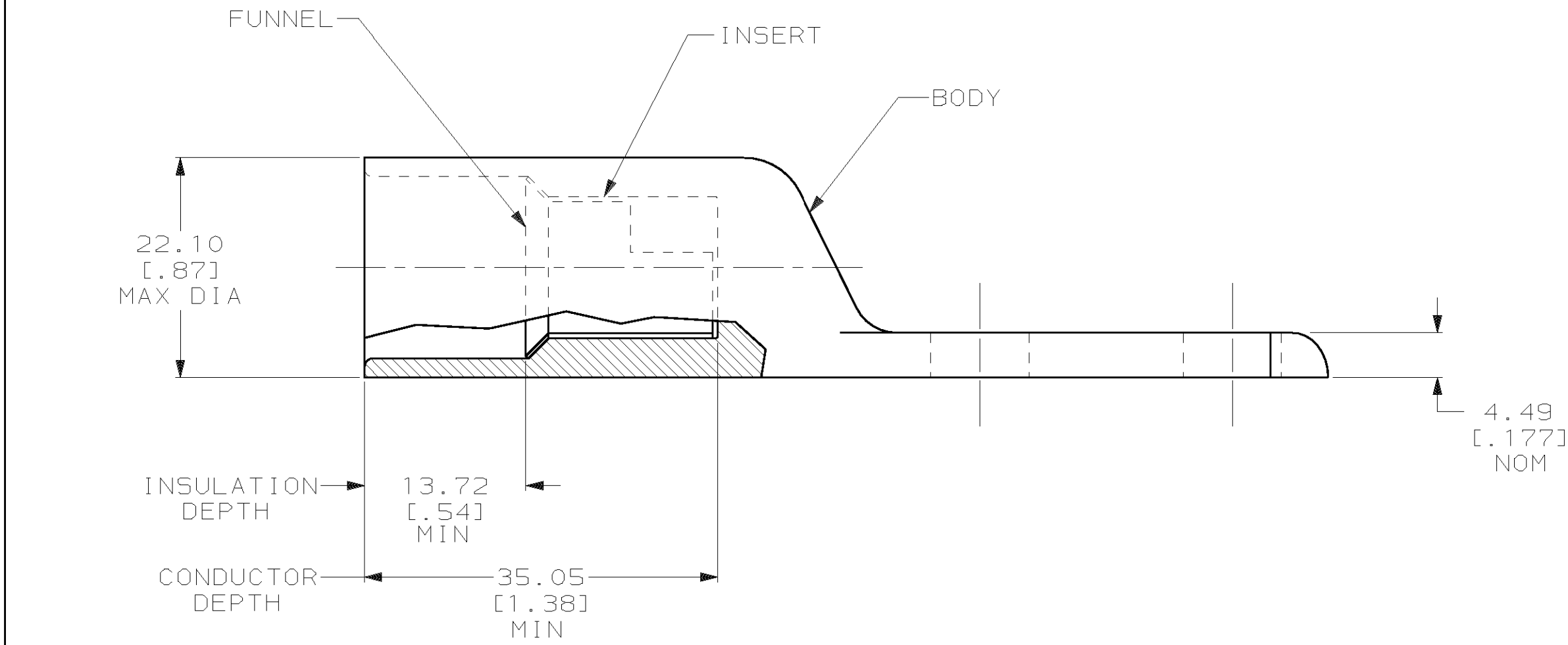


LOC		DIST		ZONE		LTR		REVISIONS		DATE	APPD
G	86	P	F			C		REV PER 063A-0659-00	09NOV00	JR MS	



1 WIRE INSULATION: 14.98[.590] - 17.27[.680] DIA
 2 THE TONGUE RADIUS FEATURE IS NOT A TOOLING CONTROLLED DIMENSION AND MAY NOT BE A TRUE RADIUS.



INSERT & FUNNEL: BRASS MIL-C-50 NICKEL PL QQ-N-290 0.00762[.000300] AVG THK	55841-1
BODY: COPPER ASTM-B187 ANNEALED SILVER PL QQ-S-365 0.00508[.000200] MIN THK	

DO NOT SCALE PRINT. UNLESS SPECIFIED DIMENSIONS IN mm [INCHES] TOLERANCES ON:		DR 6/15/92 DK SCHRUM		AMP Incorporated Harrisburg, PA 17105-3608	
2 PLC DEC ± -		CHK 6/16/92 WJ VOCKROTH			
3 PLC DEC ± -		APPD 6/16/92 AJ KAUFMAN		NAME	
ANGLES ± -		APPD 6/16/92 CR RHODS		WIRE TERMINAL, COPALUM™, SEALED, RING TONGUE, HIGH TEMP, WIRE SIZE: 106.65mm² [4/0] ALUMINUM 86.30mm² [3/0] COPPER	
MATERIAL		PRODUCT SPEC		SIZE	
SEE TABLE		108-11011 TENTATIVE		CAGE CODE	
FINISH		APPLICATION SPEC		DRAWING NO	
SEE TABLE		114-2134		00779 C=55841	
		WEIGHT		SCALE	
		113 GRAMS		2:1	
				SHEET	
				1 OF 1	

THIS DRAWING IS A CONTROLLED DOCUMENT FOR AMP INCORPORATED. IT IS SUBJECT TO CHANGE AND THE CONTROLLING ENGINEERING ORGANIZATION SHOULD BE CONTACTED FOR THE LATEST REVISION.