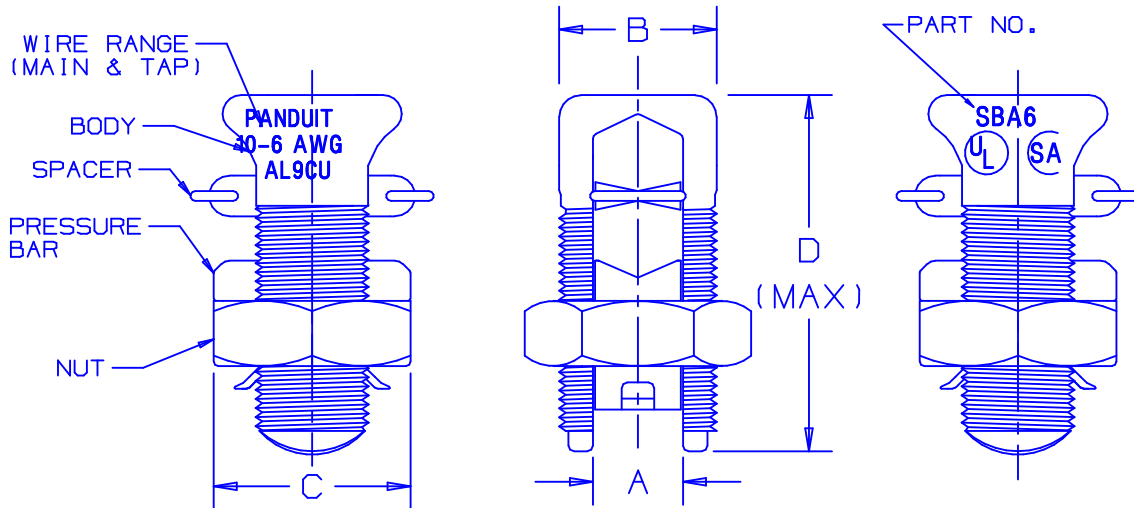


PART NUMBER	WIDTH "A"	BODY WIDTH "B"	NUT HEX "C"	LENGTH "D"	THREAD	TIGHTENING TORQUE IN-LB
SBA6	.204	.56	.75	1.58	9/16"-18UNF	165
SBA4	.258	.62	.81	1.38	5/8"-18UNF	165
SBA2	.323	.69	.94	1.58	11/16"-16UN	275
SBA1/0	.385	.75	1.00	1.92	3/4"-16UNF	385
SBA2/0	.435	.88	1.12	1.92	7/8"-14UNF	385
SBA4/0	.544	1.13	1.49	2.54	1 3/16"-12UN	500

PART NUMBER	ALUM. TO ALUM., ALUM TO COPPER, COPPER TO COPPER CONDUCTORS					
	MAX. RUN TO MAX. TAP		MIN. RUN TO MIN. TAP		MAX. RUN TO MIN. TAP	
SBA6	#6 STR(.184)	#6 STR(.184)	#10 SOL(.102)	#10 SOL(.102)	#6 STR(.184)	#10 SOL(.102)
SBA4	#4 STR(.232)	#4 STR(.232)	#8 SOL(.129)	#10 SOL(.102)	#4 STR(.232)	#10 SOL(.102)
SBA2	#2 STR(.292)	#2 STR(.292)	#6 SOL(.169)	#8 STR(.146)	#2 STR(.292)	#8 STR(.146)
SBA1/0	#1/0 STR(.373)	#1/0 STR(.373)	#2 STR(.268) (COMPACT)	#8 SOL(.129)	#1/0 STR(.373)	#8 SOL(.129)
SBA2/0	#2/0 STR(.418)	#2/0 STR(.418)	#2 STR(.268) (COMPACT)	#8 STR(.146)	#2/0 STR(.418)	#8 STR(.146)
SBA4/0	#4/0 STR(.528)	#4/0 STR(.528)	#2 STR(.268) (COMPACT)	#6 STR(.184)	#4/0 STR(.528)	#6 STR(.184)



NOTES:

1. ALL SPLIT BOLT COMPONENTS ARE ALUMINUM ALLOY MATERIAL.
2. SPLIT BOLT BODY, SPACER AND PRESSURE BAR ARE ELECTRO TIN PLATED.
4. U/L LISTED PER UL486B- 90°C RATED. C.S.A. CERTIFIED
5. FOR INSTALLATION OF 90° C MAX RATED CONDUCTORS IN NEC APPLICATIONS THERE IS NO NEED TO SCRATCH BRUSH AND NO NEED TO USE OXIDE INHIBITING COMPOUND. FOR ALL OTHER APPLICATIONS OXIDE INHIBITING COMPOUND IS RECOMMENDED.
6. RATED FOR ALUMINUM TO ALUMINUM, ALUMINUM TO COPPER AND COPPER TO COPPER CONDUCTORS.

C41298\_00.PRT

**PANDUIT** CORP.

TINLEY PARK, ILLINOIS

ALUMINUM SPLIT BOLT CONNECTORS  
#6 AWG THRU 4/0 AWG

0	01/01	EJS		RELEASED					
REV	DATE	BY	CHK	DESCRIPTION	ECN #	CUST	PM	DRAWN BY	CHK'D

								EJS		NONE	C41298
--	--	--	--	--	--	--	--	-----	--	------	--------