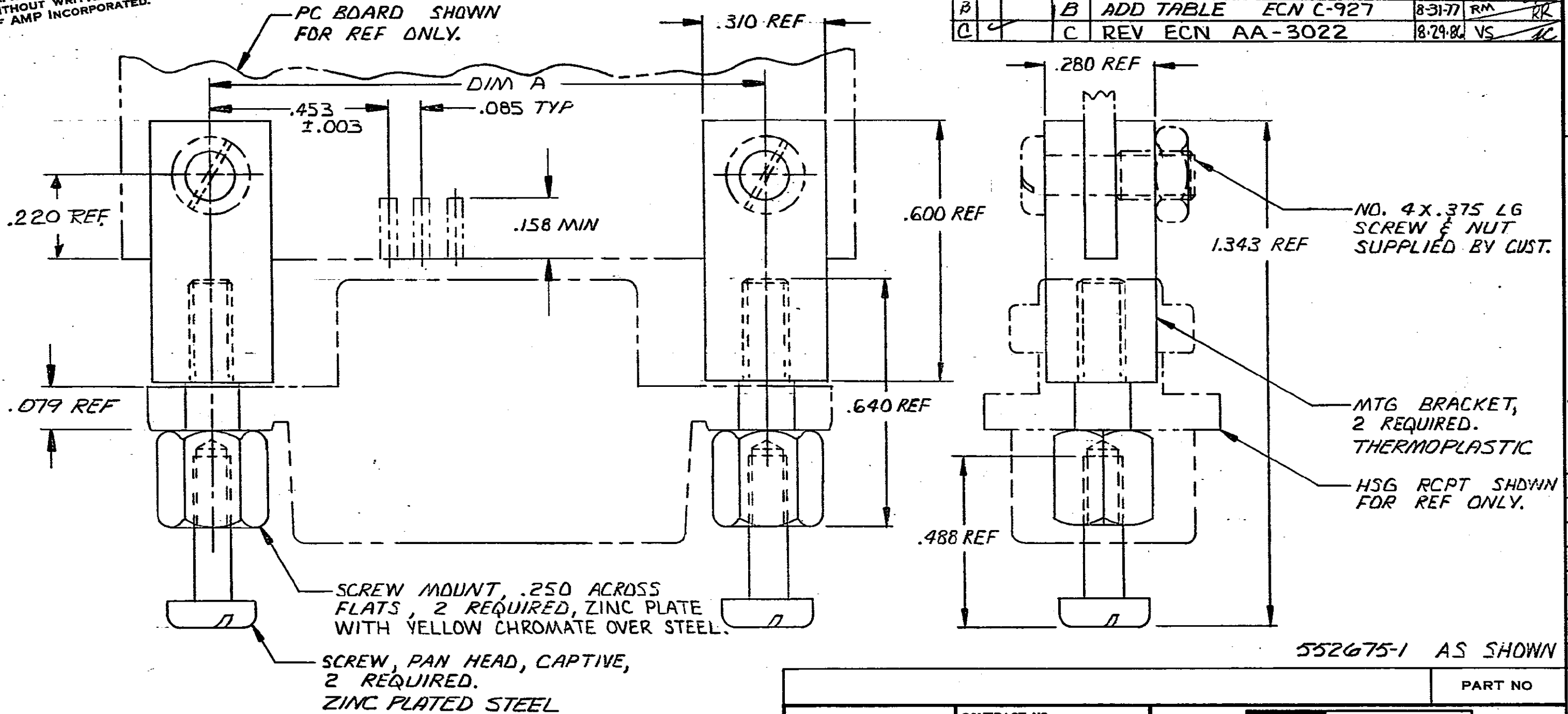


© COPYRIGHT 1976 BY AMP INCORPORATED, HARRISBURG, PA.
 ALL INTERNATIONAL RIGHTS RESERVED. AMP INCORPORATED PRODUCTS
 COVERED BY U. S. AND FOREIGN PATENTS AND/OR PATENTS PENDING.

UNPUBLISHED COPY NOT TO BE
 REPRODUCED NOR PUBLISHED
 WITHOUT WRITTEN PERMISSION
 OF AMP INCORPORATED.

REVISIONS

P	F	ZONE	LTR	DESCRIPTION	DATE	APPROVED
C			D	RELEASE NPR C77-22	4-14-77	TD
A			A	ADD .220 REF C-903	9/1/77	RM
B			B	ADD TABLE ECN C-927	8-31-77	RM
C			C	REV ECN AA-3022	8-29-80	VS



552675-1 AS SHOWN

64	3.542	▲
50	2.946	
36	2.352	
24	1.842	
14	1.416	.125
NO OF POSN	DIM A	MTG HOLE DIA

CHAMP* / CHAMP-LOK* Connectors
 * Trademarks of AMP Incorporated

UNLESS OTHERWISE SPECIFIED DIMENSIONS ARE IN INCHES. TOLERANCES ON: DECIMALS ±.015 ANGLES ± 1°		CONTRACT NO		AMP INCORPORATED Harrisburg, Pa.	
MATERIAL		DR. <i>Jerry Peltz</i> 2-12-77		NAME KIT, HARDWARE, SCREW LOCK, EDGE MT, CHAMP	
FINISH		CHK. <i>W. Condon</i> 4-26-77		SIZE B	
		APPR. <i>J. Aug</i> 4-27-77		CODE IDENT NO 00779	
		DSGN APPD		DRAWING NO 552675	
		OTHER APPD		SCALE 4-1	
				SHEET 1 OF 1	

CUSTOMER DRAWING