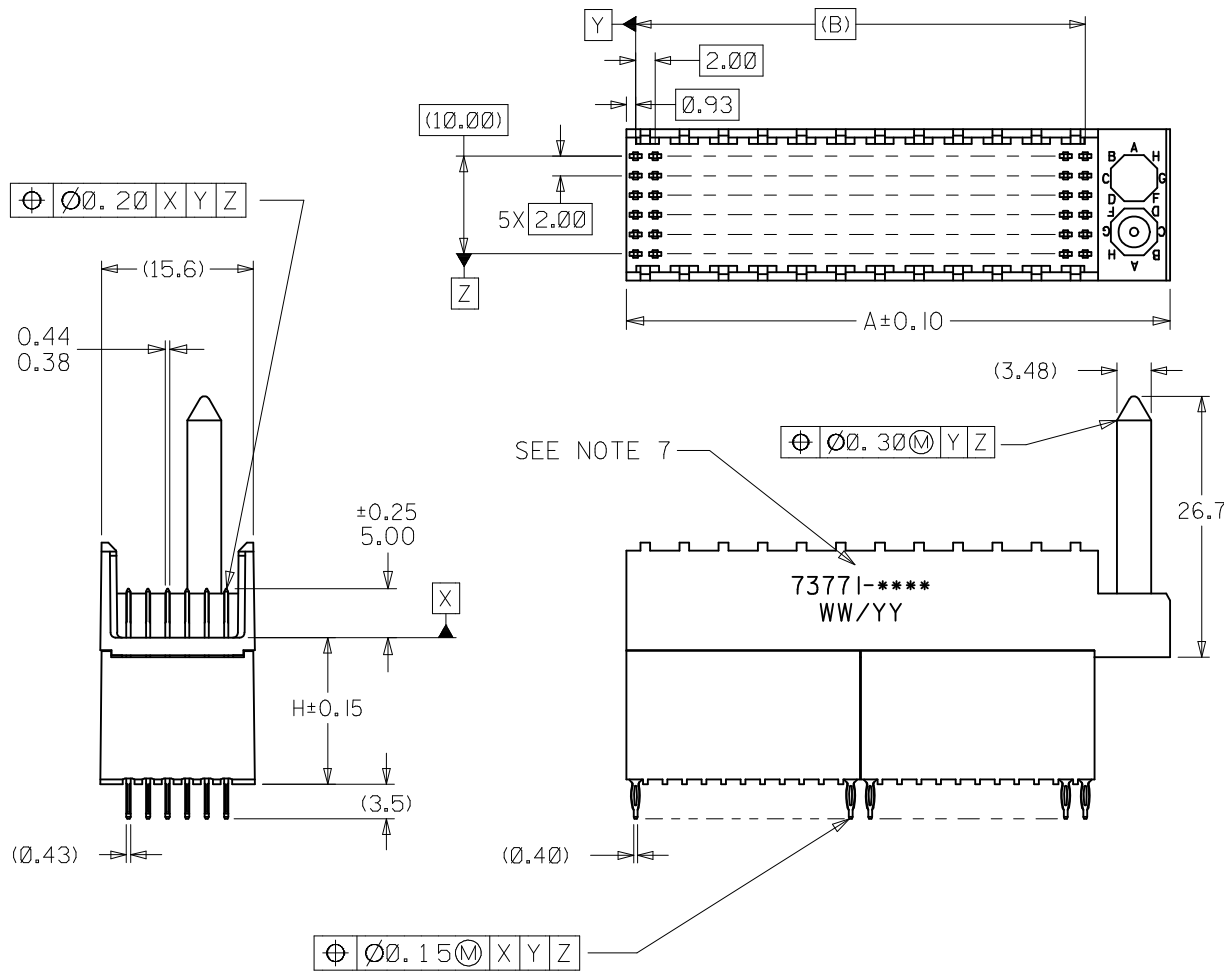
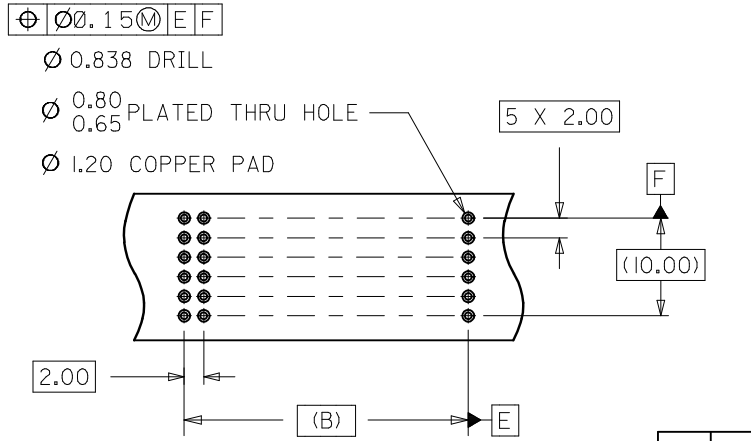


10 9 8 7 6 5 4 3 2 1



- NOTES:
1. MATERIALS: HOUSING-LIQUID CRYSTAL POLYMER (LCP), GLASS-FILLED UL 94V-0, COLOR: BLACK, TERMINAL: PHOSPHOR BRONZE
 2. FINISH: SELECTIVE GOLD (Au) IN CONTACT AREA, 0.76 MICROMETER MINIMUM THICKNESS; SELECTIVE TIN (Sn) ON TAILS, 0.38 MICROMETER MINIMUM THICKNESS; NICKEL (Ni) UNDERPLATE OVERALL.
 3. THIS PART CONFORMS TO MOLEX PRODUCT SPECIFICATION: PS-73780-999.
 4. DIMENSIONS ARE IN MILLIMETERS
 5. RECOMMENDED PCB THICKNESS: 2.50 MINIMUM
 6. PACKAGE PER PK-70837-0870, PK-70873-0871, OR PK-70873-00875
 7. PART MARKED WITH PART NUMBER AND DATE CODE APPROXIMATELY WHERE SHOWN.



2	A
1	A
SHT	REV

ASSEMBLY P/N	TOTAL NUMBER OF SIGNAL CONTACTS	DIM "A"	DIM "B"	DIM "H"
73771-019*	72	31.6	22.00	15.05
73771-029*	72	31.6	22.00	6.05
73771-039*	72	31.6	22.00	10.05
73771-119*	144	55.6	46.00	15.05
73771-129*	144	55.6	46.00	6.05
73771-139*	144	55.6	46.00	10.05

INITIAL RELEASE	QUALITY SYMBOLS
EC NO: UCP2005-2847	▽=0
DRWNS: MIBARRA 2005/07/25	▽=0
CHKD: BSMART 2005/07/26	
APPR: SMILLER 2005/07/26	
REV A	

GENERAL TOLERANCES (UNLESS SPECIFIED)	
mm	INCH
4 PLACES ± --- ± ---	
3 PLACES ± --- ± ---	
2 PLACES ± 0.05 ± ---	
1 PLACE ± 0.10 ± ---	
ANGULAR ± 1/2°	
DRAFT WHERE APPLICABLE MUST REMAIN WITHIN DIMENSIONS	

DIMENSION STYLE	
MM ONLY	
DRAWN BY	DATE
MIBARRA	05/07/06
CHECKED BY	DATE
BSMART	05/07/06
APPROVED BY	DATE
SMILLER	05/07/06
MATERIAL NO.	
SEE TABLE	
SIZE B	

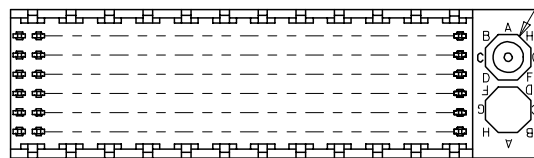
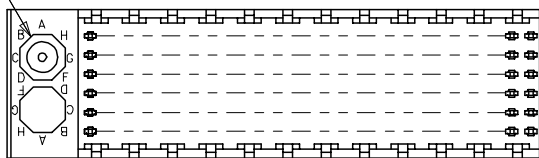
SCALE	DESIGN UNITS	THIRD ANGLE PROJECTION
2:1	METRIC	
TITLE		
SALES ASSY HDM BACKPLANE STACKING MODULE POLAR/GUIDE OPTION PRESSFIT		
Molex MOLEX INCORPORATED		
DOCUMENT NO.	SHEET NO.	
SD-73771-002	1 OF 2	
THIS DRAWING CONTAINS INFORMATION THAT IS PROPRIETARY TO MOLEX INCORPORATED AND SHOULD NOT BE USED WITHOUT WRITTEN PERMISSION		

9 8 7 6 5 4 3 2 1

10 9 8 7 6 5 4 3 2 1

LOCATION A

LOCATION B



REF. MATERIAL NUMBER 73771-1100
GUIDE PIN IS IN LOCATION A

REF. MATERIAL NUMBER 73771-1101
GUIDE PIN IS IN LOCATION B

MATERIAL NUMBER ASSIGNMENT

73771- * * * *

0 = 72-CIRCUIT
1 = 144-CIRCUIT

1 = 15.05 STACKING HEIGHT
2 = 6.05 STACKING HEIGHT
3 = 10.05 STACKING HEIGHT

NUMBER	GUIDE POST LOCATION
0	A
1	B
2	N/A

NUMBER	PLATING
9	GOLD - TIN

INITIAL RELEASE EC NO: UCP2005-2847 DRWN: MIBARRA 2005/07/25 CHKD: BSMART 2005/07/26 APPR: SMILLER 2005/07/27	QUALITY SYMBOLS ▽=0 ▽=0	GENERAL TOLERANCES (UNLESS SPECIFIED)		DIMENSION STYLE MM ONLY		SCALE ---	DESIGN UNITS METRIC	THIRD ANGLE PROJECTION	
		4 PLACES	± ---	± ---	DRAWN BY MIBARRA	DATE 05/07/06	TITLE SALES ASSY HDM BACKPLANE STACKING MODULE POLAR/ GUIDE OPTION PRESSFIT		
		3 PLACES	± ---	± ---	CHECKED BY BSMART	DATE 05/07/06			
		2 PLACES	± ---	± ---	APPROVED BY SMILLER	DATE 05/07/06	MOLEX INCORPORATED		
1 PLACE	± ---	± ---	ANGULAR ±1/2°		MATERIAL NO. SEE TABLE	DOCUMENT NO. SD-73771-002	SHEET NO. 2 OF 2		
DRAFT WHERE APPLICABLE MUST REMAIN WITHIN DIMENSIONS				THIS DRAWING CONTAINS INFORMATION THAT IS PROPRIETARY TO MOLEX INCORPORATED AND SHOULD NOT BE USED WITHOUT WRITTEN PERMISSION					

9 8 7 6 5 4 3 2 1