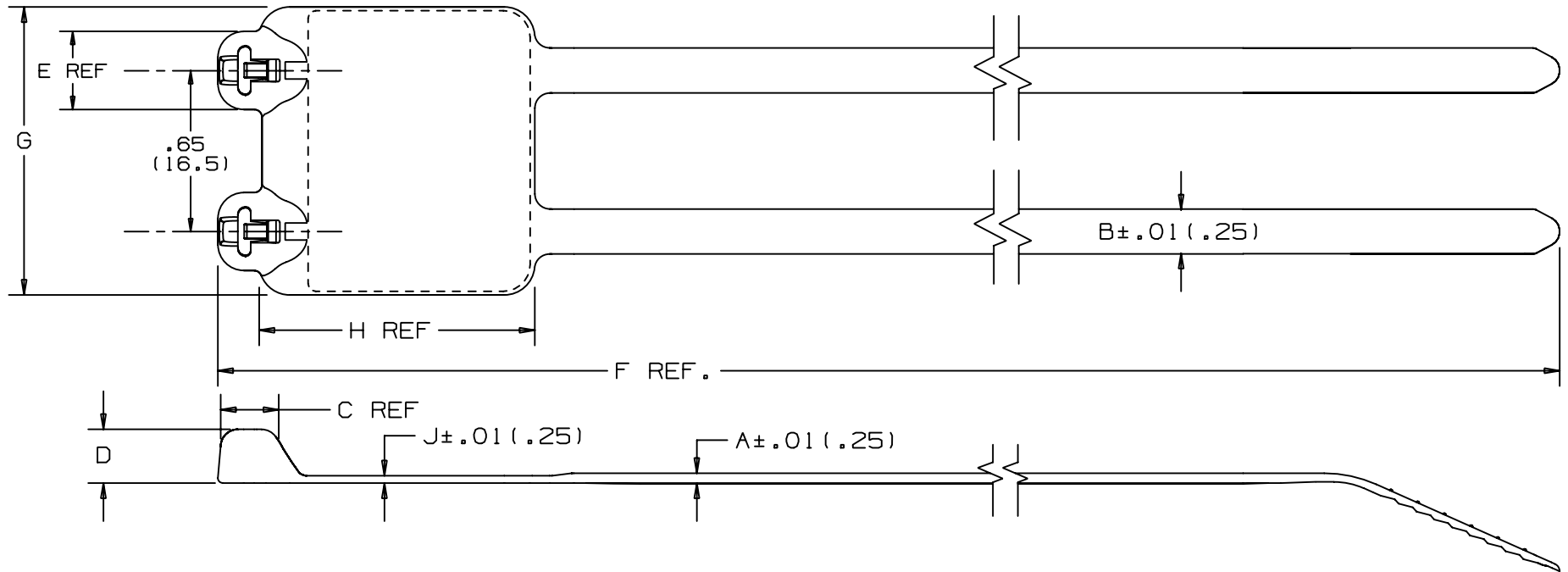


THIS COPY IS PROVIDED ON A RESTRICTED BASIS AND IS NOT TO BE USED IN ANY WAY DETRIMENTAL TO THE INTERESTS OF PANDUIT CORP.



PANDUIT * PART NO.	BUNDLE DIA.		A	B	C	D	E	F	G	H	J	WRITE-ON AREA	MIN LOOP**	CROSS- SECTION	WEIGHT
	MIN. <sub>in</sub> (mm)	MAX. <sub>in</sub> (mm)	in (mm)	in (mm)	in (mm)	in (mm)	in (mm)	in (mm)	in (mm)	in (mm)	in (mm)	in. (mm)	TENSILE		
B2M2S	.37 (9.5)	2.00 (51)	.045 (1.2)	.185 (4.7)	.205 (5.2)	.220 (5.6)	.320 (8.1)	8.0 (203)	1.16 (29.5)	1.1 (27.9)	.032 (.81)	1.15 × .91 (29.2 × 23.1)	50 (222)	STANDARD	.65 (294)

**NOTES:**

- \*1) SEE CURRENT PRICE SHEET FOR PART NUMBER SUFFIX DESIGNATION FOR PACKAGE SIZE AND PART COLOR.
- \*\*2) LOOP TENSILE IS PER LEG OF STRAP.

DIMENSIONS IN PARENTHESES ARE IN METRIC UNITS

PANDUIT CORP. TINLEY PARK, ILLINOIS

DOME-TOP Barb Ty MARKER TIE  
BM SERIES

UNLESS OTHERWISE SPECIFIED,  
DIMENSIONAL TOLERANCES ARE:  
(.X) ± .005 (.127) (XXX) ± .020 (.508)  
(.XX) ± .02 (.508) ANGLES ± .005 (.127)

UNLESS OTHERWISE SPECIFIED,  
ALL DIMENSIONS ARE GIVEN  
IN INCHES, THIRD ANGLE PROJECTION.

DRAWN BY  
JABO

MAT'L:

SCALE  
NONE

DATE  
6/04/97

NYLON 6.6

DRAWING NO.

BT-0251

DWG  
A  
SIZE

REV	DATE	BY	CHK	DESCRIPTION	ECN	R	CUST	SUP
4	12/1/04	ERW		REWORDED TITLE BLOCK	0251	4		