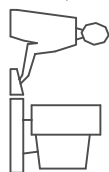


THIS IS A C.A.D. GENERATED DRAWING
DO NOT MAKE MANUAL REVISIONS TO MASTER.

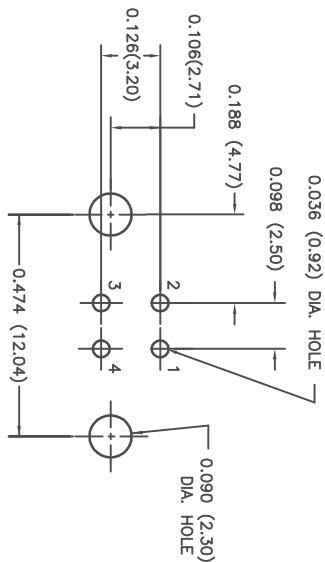


TOLERANCE:
IN MM
.XX ±0.01
.XXX ±0.006
.XXXX ±0.002
:X ±0.25
:XX ±0.15
:XXX ±0.05

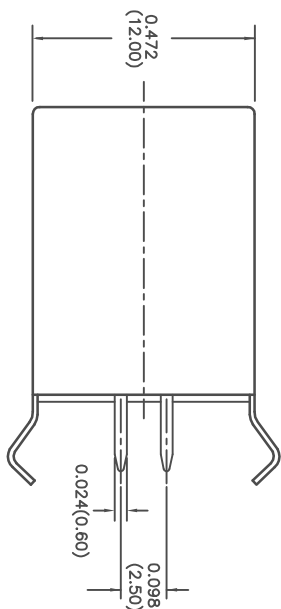
ISSUE NUMBER
DIM: 0.612(15.55) WAS 0.63(16.0)
0.439(11.15) WAS 0.445(11.30) ⑥
0.153(3.90) WAS 0.146(3.70)
ADD DIM: 0.238(6.04), 0.207(5.25)
0.177(4.5), 0.078(2.0), 0.024(0.60)
R.STA.MONICA JUN.10/2010

0.333(8.45) AND 0.306(7.78) WAS
0.372(9.45) AND 0.331(8.40) ⑦
F.BRIONES OCT.08/10

ADD OPERATING TEMPERATURE
R.STA.MONICA APR.10/2014 ⑧



PC BOARD MOUNTING DIMENSIONS



MATERIAL:
HOUSING: PBT GLASS FILLED, WHITE COLOR, UL94V-0
CONTACTS: PHOSPHOR BRONZE, GOLD PLATED ON
CONTACT AREA WITH TIN PLATING ON TAIL
SHELL: BRASS, NICKEL PLATED
BOTTOM COVER: PBT GLASS FILLED WHITE COLOR

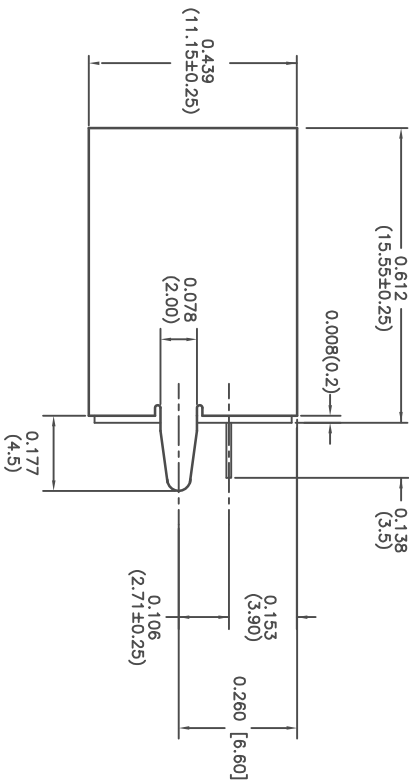
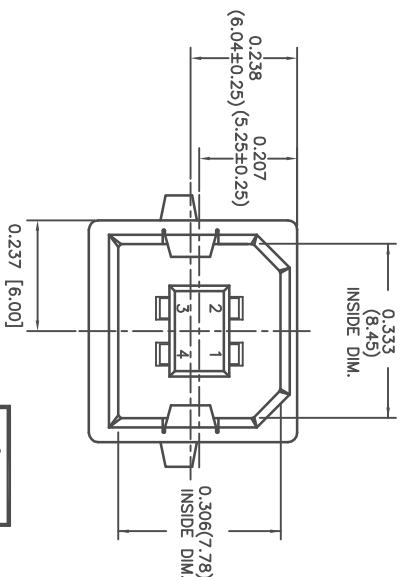
CONTACT PLATING GOLD PLATING PART NO.
GOLD FLASH 690-004-260-023
15 MICRONS OF GOLD 690-004-360-023
30 MICRONS OF GOLD 690-004-660-023

PART NUMBER: 690-004-260-023

CONTACT CODE _____

SPECIFICATIONS:

1. CONTACT RESISTANCE:
30 MOHM MAX
 2. INSULATION RESISTANCE:
1000OHM MIN AT 500VDC
 3. RATED VOLTAGE AND CURRENT:
1.5A @ 250VAC MIN.
 4. DIELECTRIC WITHSTANDING VOLTAGE:
500VAC (RMS) FOR 1MIN
 5. INSERTION FORCE: 35N MIN
 6. EXTRACTION FORCE: 10N MIN
- OPERATING TEMPERATURE: -55°C TO +85°C



THIS SERIES FULLY CONFORMS TO THE
EUROPEAN UNION DIRECTIVES
2011/65/EU FOR ROHS COMPLIANCY.

USB CONNECTOR B TYPE, VERTICAL, SINGLE DECK

EDAC INC
TORONTO, ONTARIO
CANADA
YOUR CONNECTION TO QUALITY & SERVICE

THESE DRAWINGS AND SPECIFICATIONS
ARE THE PROPERTY OF EDAC INC. AND
SHALL NOT BE REPRODUCED, OR COPIED
OR USED AS THE BASIS FOR THE
MANUFACTURE OR SALE OF APPARATUS
WITHOUT WRITTEN PERMISSION.

DRAWING NUMBER

690-004-260-023

ISSUE

8

ACAD REFERENCE NO. 690-004-260-023

DRAWN: J. CHOW DATE: OCT 16/98

CHECKED: DATE:

SCALE: (IN C.A.D. 1:1) SHEET 1 OF 1