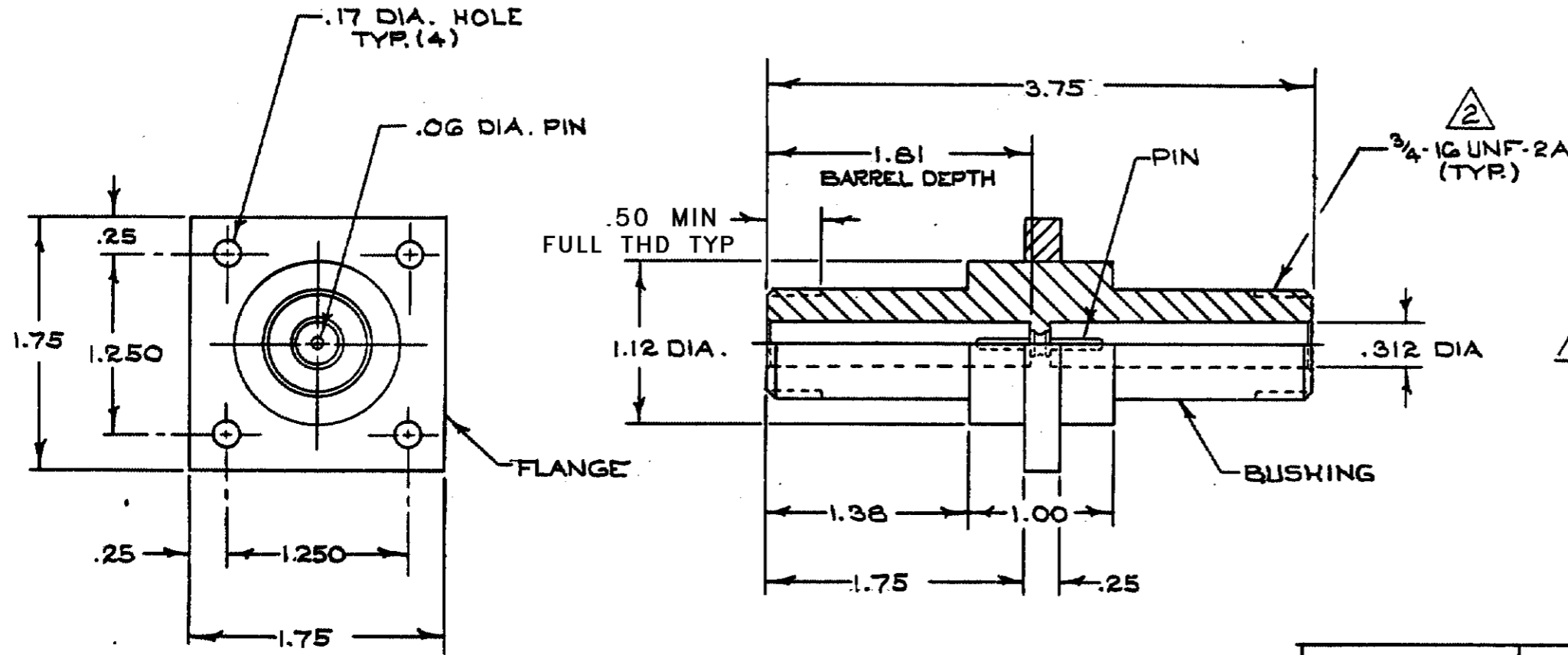


© COPYRIGHT 1973 BY AMP INCORPORATED, HARRISBURG, PA. ALL INTERNATIONAL RIGHTS RESERVED.

Unpublished copy not to be reproduced or published without written permission of AMP Incorporated

THIS PRODUCT DESIGNED AND BUILT BY AMP INCORPORATED. NO LICENSE TO USE THAT DESIGN IN MANUFACTURE, OR TO USE ANY ISSUED OR PENDING PATENTS WHICH ARE INVOLVED, IS IMPLIED.

| REVISIONS | | | | |
|-----------|-----|--------------------------|---------|------------|
| ZONE | LTR | DESCRIPTION | DATE | APPROVED |
| | A | REV. & REDRAWN | 6-4-73 | Ken X |
| ✓ | B | OBSOLETE -2 ECN 53630 | 1-29-87 | JM |
| | C | REV PER ECN S-3960 | 4-12-87 | R8 |
| | D | REACTIVATE -2 DF-7279 CT | 2-93 | DE 2/11/93 |
| | E | ECO-10-007742 PY | 4-10 | DE |



1 RECEPTACLE TO MATE WITH AMP LGH -3 LEAD ASSEMBLY, AVAILABLE SEPARATELY.
 2 PER FEDERAL STANDARD H-2B 3 WIRE METHOD. DIMENSION OVER WIRES TO BE: .7474 - .7654.

| | |
|----------|-------------------------------|
| 850909-2 | AS SHOWN WITH GOLD PLATED PIN |
| 850909-1 | AS SHOWN WITH TIN PLATED PIN |

| QTY REQD | QTY REQD | ITEM NO | DWG SIZE | PART OR IDENTIFYING NO | NOMENCLATURE OR DESCRIPTION | SYMBOL |
|----------|----------|---------|----------|------------------------|-----------------------------|--------|
| -2 | -1 | | | | | |

| QTY REQD | APPLICATION |
|-----------|-------------|
| NEXT ASSY | FINAL ASSY |
| NEXT ASSY | USED ON |

| | |
|---|--|
| UNLESS OTHERWISE SPECIFIED: DECIMALS } .00 = ±.02 .000 = ±.005 ANGLES = ± HOLES } UNDER .251 = .251 TO .500 = OVER .500 = DIMENSIONS ARE IN INCHES | CONTRACT NO DR L. GEIB 6-10-69 CHK APPD APPD DSGN APPD J.W. GAW 6-12-69 OTHER APPD |
| MATERIAL MOLDED GLASS EPOXY | AMP INCORPORATED Elizabethtown, Pa. |
| FINISH BLACK | NAME LGH-3 RECEPTACLE FEED THRU ASSY (FOR BULKHEAD APPLICATION) |

| | | | |
|-----------|------------------------|------------------|----------|
| SIZE B | CODE IDENT NO 89110 | NUMBER 850909 | REV E |
| SCALE | WT | SHEET | OF |

DO NOT SCALE PRINT

PRINT DIST