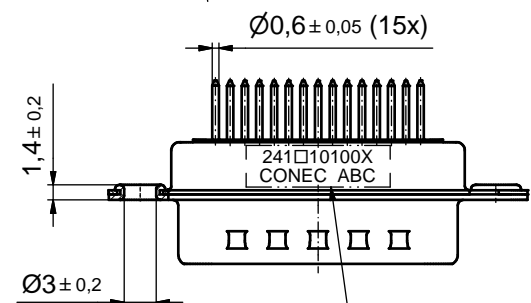
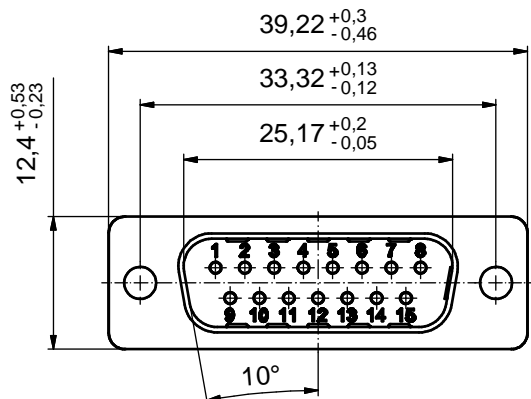
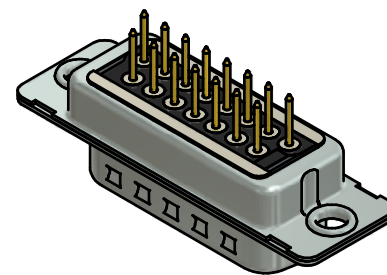
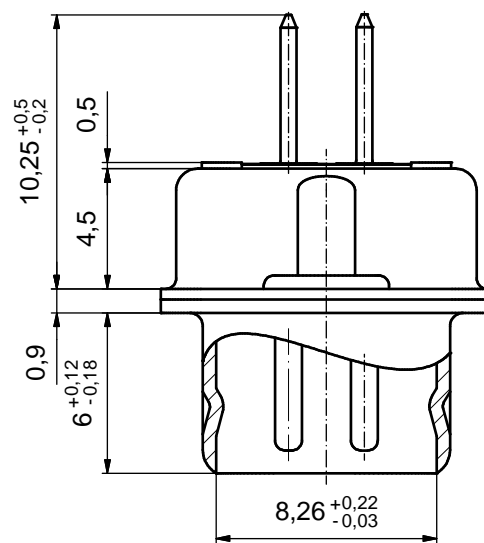
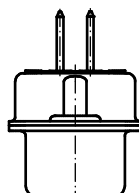


P.C.B. HOLE DRILLINGS
(P.C.B. TOP SIDE)

(5 : 1)



SEE NOTE 7



NOTES:

1. FOR WAVESOLDERING (SOLDER BATH TEMPERATURE 260°C FOR 5 SEC. AND SOLDER PREHEAT 100°C FOR 30 SEC.)
2. METALSHELLS: STEEL; min. 315µm TIN over 40-80µm NICKEL
3. INSULATOR: HIGH TEMPERATURE PLASTIC UL 94 V-0, BLACK
4. CONTACTS: COPPER ALLOY; PLATING (SEE PART NO.):
 - PLEASE ADD A for GOLD FLASH over NICKEL (PREFERRED TYPE)
 - PLEASE ADD B for 20µm HARD GOLD over min. 50µm NICKEL
 - PLEASE ADD C for 30µm HARD GOLD over min. 50µm NICKEL
5. DIELECTRIC WITHSTANDING VOLTAGE: 424 VDC
6. CAPACITANCE: 830pF ± 20%
7. CONNECTOR IS PART MARKED: **241□10100X CONEC ABC** (see note 4)

RoHS compliant

THIS DRAWING MAY NOT BE COPIED OR REPRODUCED IN ANY WAY, AND MAY NOT BE PASSED ON TO A THIRD PARTY WITHOUT WRITTEN PERMISSION. OWNERSHIP AND COPYRIGHT OF CONEC GmbH DO NOT ALTER CAD DRAWING BY HAND	tolerance			dim. in mm	scale: 2:1 (5:1)	
					material: SEE NOTES	
				date	name	title: D-SUB C-FILTER MALE 15pos. SOLDER PIN STRAIGHT
				drawn 23.09.2015	Heinrich	
				appd. 23.09.2015	Lehmenkühler	
				norm	d-old	
				dwg no:		DIN-A3 sh: 1
			rev. a	description Original	part no: 241□10100X (see note 4)	
			date	name		