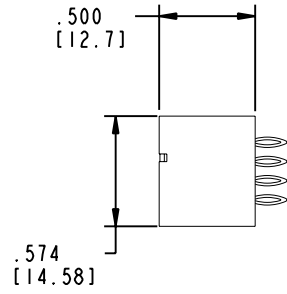
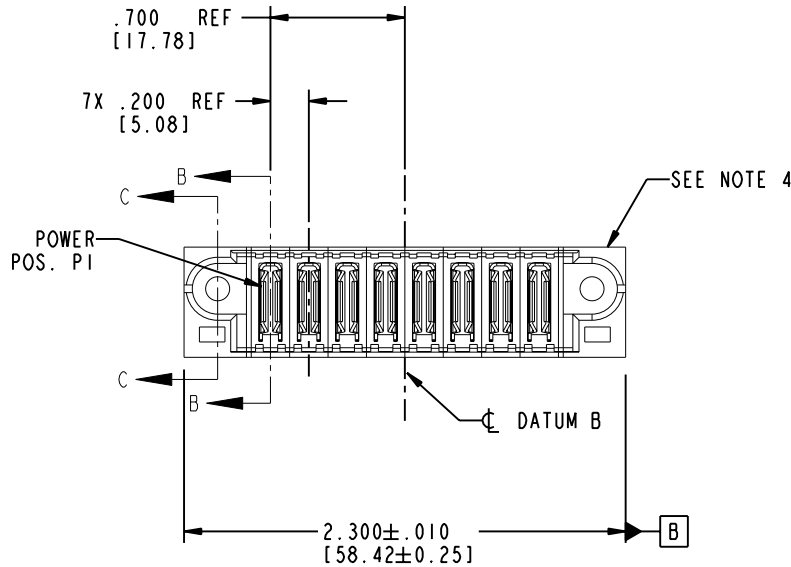


Tous droits strictement reserves. Reproduction ou communication a des tiers interdite  
 sous quelque forme que ce soit sans autorisation écrite du propriétaire.  
 Propriete de c FCI. Droits de reproduction FCI.

All rights strictly reserved. Reproduction or issue to third parties in any  
 form whenever is not permitted without written authority from the proprietor.  
 Property of FCI. Copyright FCI.

PRODUCT NO.	POWER								E2	
	E1	P1	P2	P3	P4	P5	P6	P7		P8
51952-085-- NOTE ③										



CODE	DIM "M" MATING LENGTH	CONTACT TYPE
PC	N/A [N/A]	POWER

mat'l code				SEE NOTE 2		tolerances unless otherwise specified		CUSTOMER		 www.fciconnect.com	
ltr	ecn no.	dr	date	linear	.XX±.01/0.XX±0.3		COPY		 title		
A	DG06-0004	SW	01/05/06		.XXX±.005/0.XX±0.13		projection				
					.XXX±.0020/0.XX±0.051		 INCH/MM				
				angles	0°±		 scale		product family		
				dr	STEVEN WANG	01/05/06	1:1		PwrBlade		code
				engr	STEVEN WANG	01/05/06			size		213
				chr	BEER FU	01/05/06			dwg no		sheet
				appd	JOSPEH HSIA	01/05/06			A		51952-085
sheet index	revision sheet	A	A	A	A						1 of 4

Pro/E

cage code 22526

PDM: Rev:A

STATUS: Released

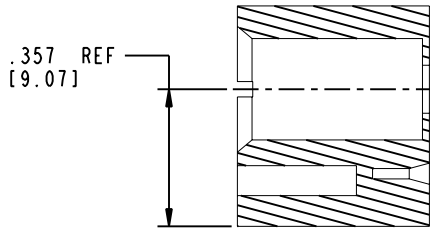
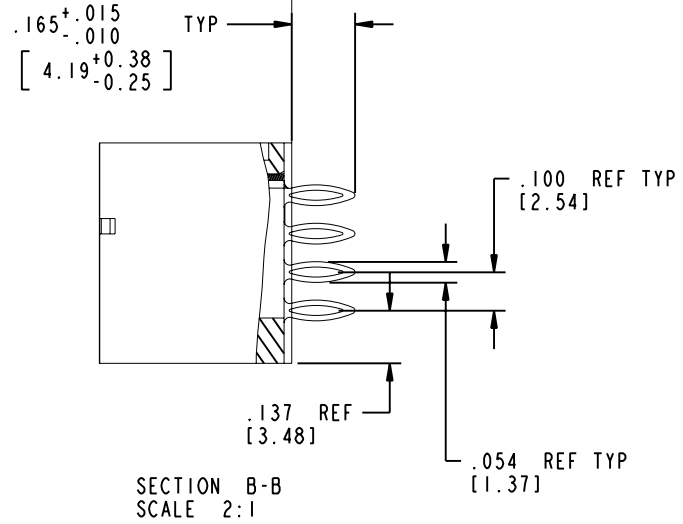
Printed: Dec 20, 2010

Tous droits strictement reserves. Reproduction ou communication a des tiers interdite sous quelque forme que ce soit sans autorisation écrite du propriétaire. Propriete de c FCI. Droits de reproduction FCI.

All rights strictly reserved. Reproduction or issue to third parties in any form whatever is not permitted without written authority from the proprietor. Property of FCI. Copyright FCI.

PRODUCT NUMBER

51952-085..  
NOTE ③



mat'l code				SEE NOTE 2		tolerances unless otherwise specified		CUSTOMER		 www.fciconnect.com	
ltr	ecn no.	dr	date	linear	$.XX \pm .01/0.X \pm 0.3$		COPY		 title <b>8P VERTICAL PF HEADER</b>		
A					$.XXX \pm .005/0.XXX \pm 0.13$		projection				
					angles	$.XXX \pm .0020/0.XXX \pm 0.051$		 INCH/MM scale 1:1			
		dr		enr	STEVEN WANG	01/05/06	product family		PwrBlade	code	213
		chr		appr	STEVEN WANG	01/05/06	size		dwg no	sheet	
		appd			BEER FU	01/05/06	A		51952-085	2 of 4	
					JOSPEH HSIA	01/05/06					
sheet index	revision sheet										

Pro/E

cage code 22526

PDM: Rev:A

STATUS: Released

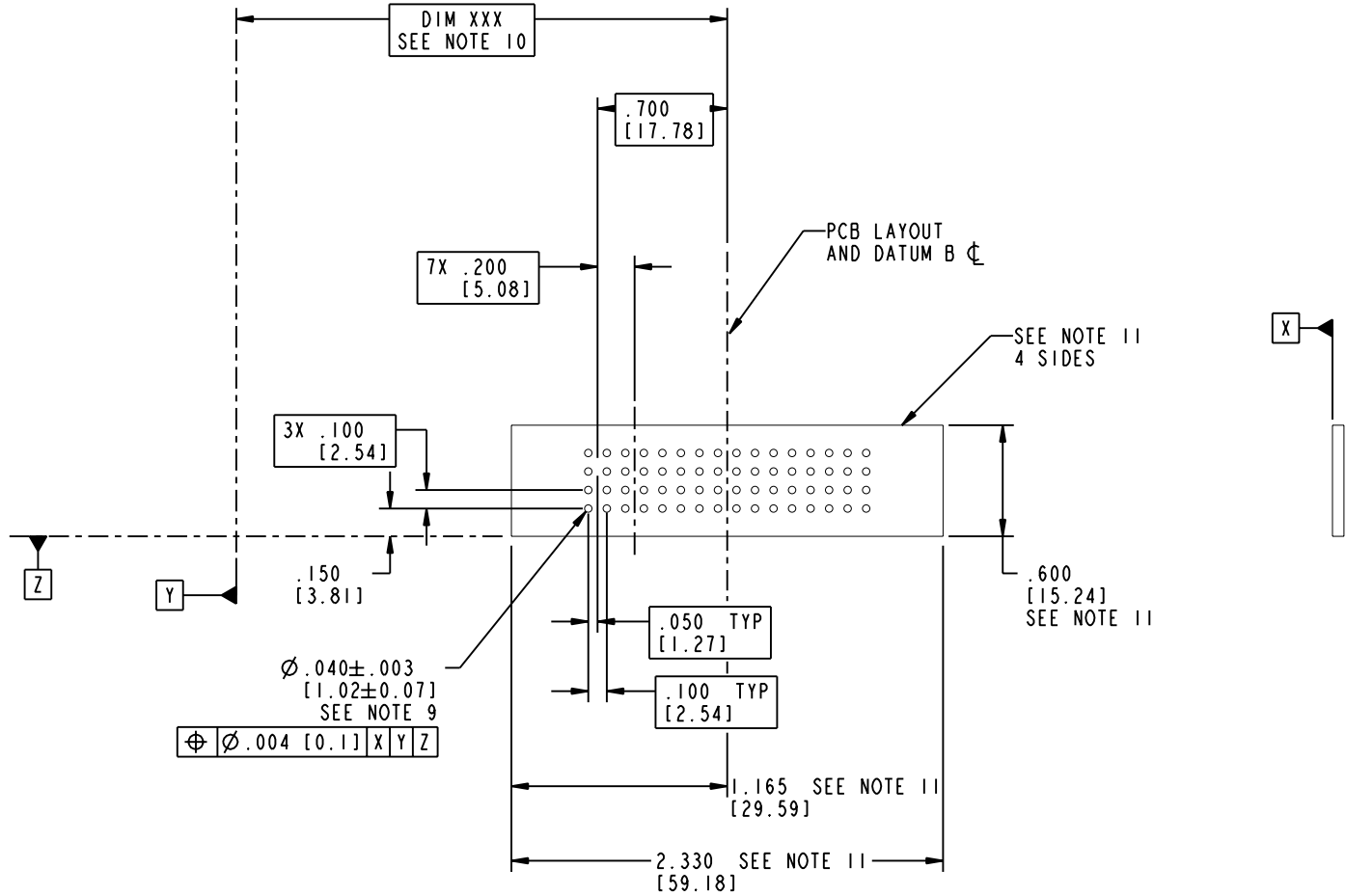
Printed: Dec 20, 2010

Tous droits strictement reserves. Reproduction ou communication a des tiers interdite sous quelque forme que ce soit sans autorisation écrite du propriétaire. Propriete de c FCI. Droits de reproduction FCI.

**FCI**

All rights strictly reserved. Reproduction or issue to third parties in any form whatever is not permitted without written authority from the proprietor. Property of FCI. Copyright FCI.

PRODUCT NUMBER  
**51952-085...**  
NOTE ③



mat'l code				SEE NOTE 2		tolerances unless otherwise specified		CUSTOMER		 www.fciconnect.com	
ltr	ecn no.	dr	date	linear	.XX±.01/0.XX±0.3	projection		COPY		title	
A				angles	.XXX±.005/0.XX±0.13					8P	
				dr	.XXX±.0020/0.XX±0.051	INCH/MM		product family		code	
				enr	0° ± 2°	scale		PwrBlade		213	
				chr	STEVEN WANG 01/05/06	1:1		size		sheet	
				appd	STEVEN WANG 01/05/06			51952-085		3 of 4	
					BEER FU 01/05/06						
					JOSPEH HSIA 01/05/06						
sheet index	revision sheet										

Pro/E

cage code **22526**

PDM: Rev:A

STATUS: Released

Printed: Dec 20, 2010

Tous droits strictement reserves. Reproduction ou communication a des tiers interdite sous quelque forme que ce soit sans autorisation écrite du propriétaire. Propriete de c FCI. Droits de reproduction FCI.

**A**  
**FCI**

All rights strictly reserved. Reproduction or issue to third parties in any form whatever is not permitted without written authority from the proprietor. Property of FCI. Copyright FCI.

A

B

PRODUCT NUMBER  
**51952-085..**  
**NOTE ③**

NOTES:

1. DIMENSIONS AND TOLERANCES ARE IN ACCORDANCE WITH ASME Y14.5M, 1994 UNLESS OTHERWISE SPECIFIED.

CONNECTOR NOTES:

② HOUSING MATERIAL: UL 94 V-0 GLASS FILLED HIGH-TEMP THERMOPLASTIC  
POWER CONTACT MATERIAL: COPPER ALLOY  
SIGNAL PIN MATERIAL: COPPER ALLOY

3. PLATING:  
51952-085, 51952-085LF PLATING SPEC. WERE SHOWN IN THE PRINT OF 10064183.

④ MANUFACTURER'S NAME, P/N, AND DATE CODE TO APPEAR ON THIS SURFACE.

5. PRODUCT SPECIFICATION GS-12-149.  
APPLICATION SPECIFICATION BUS-20-067.

6. PACKAGED IN TRAYS.

PCB NOTES:

7. ALL HOLE DIAMETERS ARE FINISHED HOLE SIZE.

8. MOUNTING HOLES, WHERE APPLICABLE, ARE UNPLATED.

⑨  $\varnothing .0453 \pm .0010$  [1.151  $\pm$  0.025] DRILLED HOLES PLATED WITH .0003 [0.008] MIN SnPb OVER .001 [0.03] TO .003 [0.08] Cu PLATING TO ACHIEVE  $\varnothing .040 \pm .003$  [1.02  $\pm$  .07] HOLE.

⑩ "DIM XXX" TO BE DETERMINED BY THE CUSTOMER.

⑪ CONNECTOR KEEP-OUT ZONE.

11. FOR PRESS FIT APPLICATION USE FCI CAM TOOL 430169-XXX.

mat'l code		SEE NOTE 2		tolerances unless otherwise specified		CUSTOMER		<b>A</b> <b>FCI</b> www.fciconnect.com	
ltr	ecn no.	dr	date	linear	.XX±.01/0.X±0.3	COPY		title	
A				linear	.XXX±.005/0.XX±0.13	projection		8P	
				angles	.XXX±.0020/0.XX±0.051			VERTICAL PF HEADER	
				dr	STEVEN WANG 01/05/06	INCH/MM		product family	
				enr	STEVEN WANG 01/05/06	scale		PwrBlade	
				chr	BEER FU 01/05/06	1:1		code	
				appd	JOSPEH HSIA 01/05/06			213	
sheet index		revision sheet						size	
								dwg no	
								A 51952-085	
								sheet	
								4 of 4	

A

B

1 | 2

3 |

4

1 | 2

Pro/E

3 |

cage code 22526

4

PDM: Rev:A

STATUS: Released

Printed: Dec 20, 2010