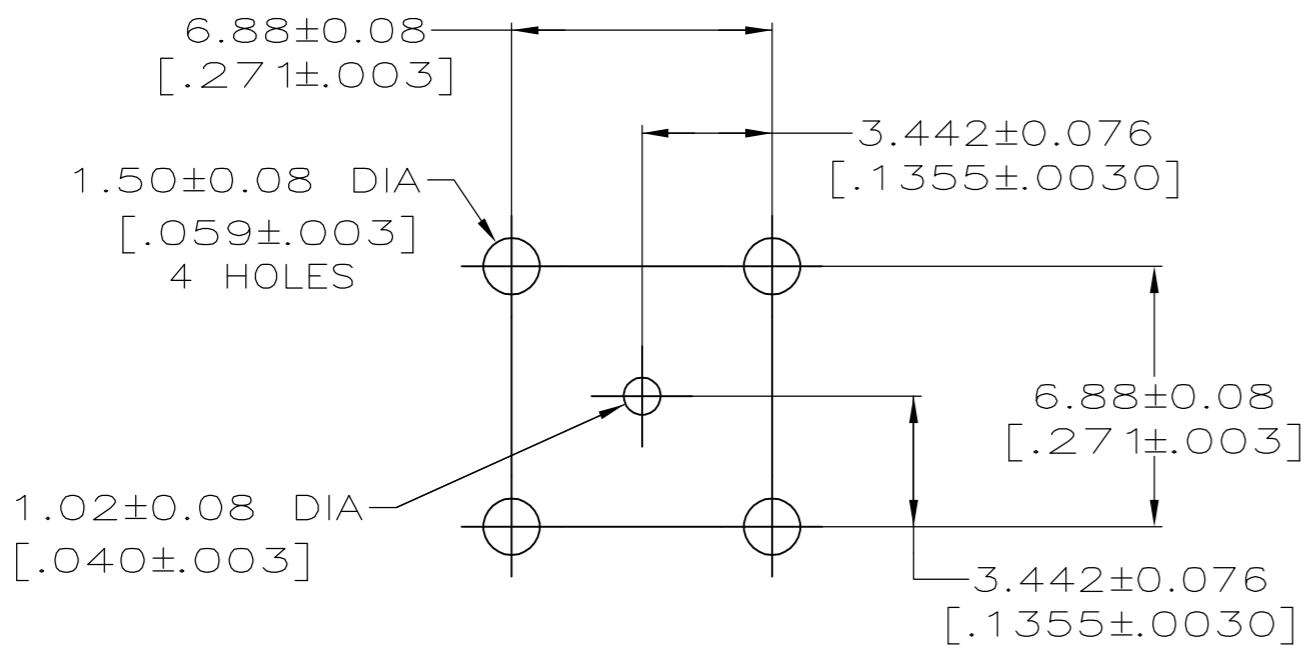
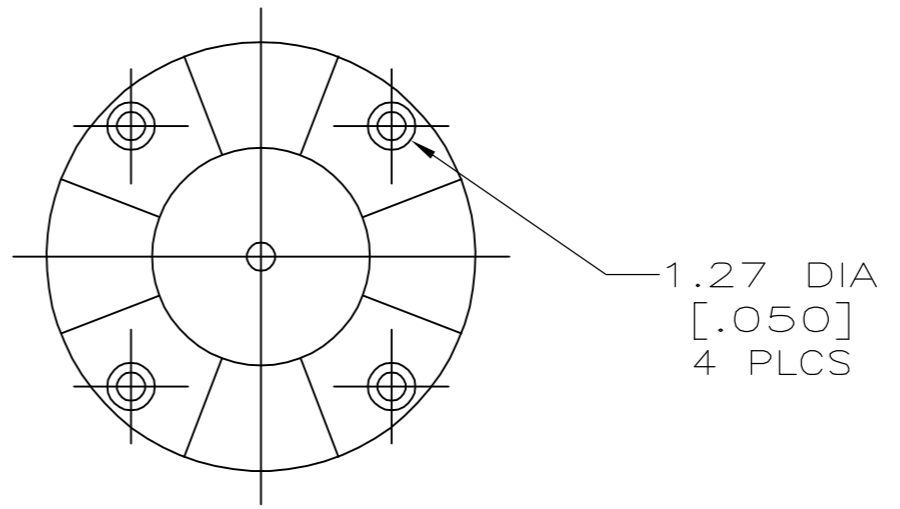
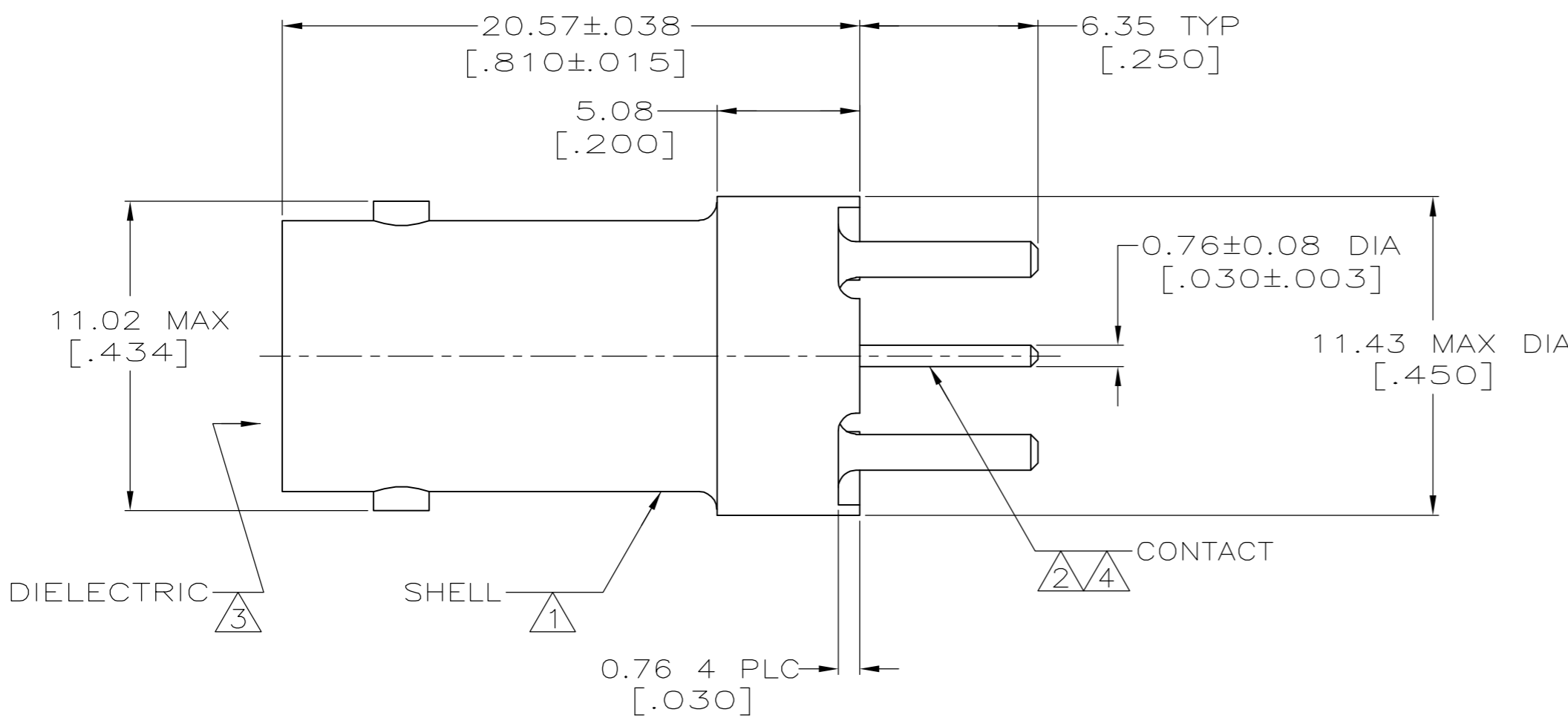


THIS DRAWING IS UNPUBLISHED. RELEASED FOR PUBLICATION
 © COPYRIGHT BY TYCO ELECTRONICS CORPORATION. ALL RIGHTS RESERVED.

LOC	DIST	REVISIONS					
		P	LTR	DESCRIPTION	DATE	DWN	APVD
AJ	16						
		01		REVISED PER ECO-06-017423	21JUL2006	KS	JL

- ① ZINC PER QQ-Z-363
- ② BERYLLIUM COPPER PER ASTM B 196
- ③ PTFE PER MIL-P-19468
- ④ GOLD PL PER MIL-G-45204, 0.76µm [.000030] MIN THK
- ⑤ BRIGHT TIN PL PER ASTM B 545, 3.04µm [.000120] MIN THK
- 6 SEE INSTRUCTION SHEET 408-9889
- ⑦ MATTE TIN PL PER ASTM B 545, 3.04µm [.000120] MIN THK



PCB CONFIGURATION

⑦	6274359-2
⑤	6274359-1
SHELL FINISH	PART NUMBER

THIS DRAWING IS A CONTROLLED DOCUMENT.		DWN L. VARELA - DOCK 02FEB2005	Tyco Electronics Corporation Harrisburg, PA 17105-3608	
DIMENSIONS: INCHES		CHK J. HAVENER 02FEB2005		
TOLERANCES UNLESS OTHERWISE SPECIFIED:		APVD J. LIPPERT 02FEB2005	NAME JACK, VERTICAL, PCB, 75 Ohm, COMMERCIAL BNC	
0 PLC ± -		PRODUCT SPEC 108-12078	SIZE A2	
1 PLC ± -		APPLICATION SPEC	CAGE CODE 00779	DRAWING NO C=6274359
2 PLC ± 0.20 [.008]		WEIGHT -	RESTRICTED TO -	
3 PLC ± -		CUSTOMER DRAWING	SCALE 5:1	SHEET 1 OF 1
4 PLC ± -			REV 01	
ANGLES ± -				
FINISH SEE NOTES 4, 5				
MATERIAL SEE NOTES 1 - 3				

6274359

A