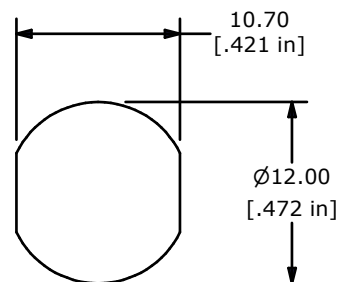


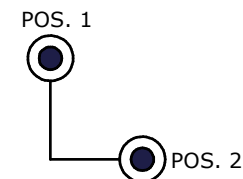
ISOMETRIC

NOTES:

1. ALL DIMENSIONS IN MM[INCH]
2. GENERAL TOLERANCE: $x.x = \pm 0.4$
 $x.xx = \pm 0.25$
3. TERM. NOS. FOR REFERENCE ONLY.
- ▲ 4. RATING: 1A @125VAC, 0.5A @250VAC
5. CONTACT RESISTANCE: 10milli-OHMS
6. DIELECTRIC STRENGTH: 1000 VAC-1Minute
7. MATERIALS:
HOUSING: ZINC ALLOY W/CHROME PLATING
CYLINDER: BRASS W/CHROME PLATING
▲ TERMINAL AND CONTACTS: SILVER PLATED
▲ KEYS (2) KEY CODE 1001: ZINC ALLOY, CHROME PLATING
8. DENOTES CRITICAL PARAMETER.
9. 2002/95/EC (ROHS) COMPLIANT
- ▲ 10. KEYLOCK, KEYS, AND HEX NUT TO BE PACKED TOGETHER IN INDIVIDUAL BAGS.



RECOMENDED PANEL CUTOUT



CIRCUIT: SPST
CONTACT CONFIGURATION
90° INDEXING

SWITCH FUNCTION	
POS 1	POS 2
↑	→
OPEN	ON 1-2

LEGEND

= INDICATES KEY PULL POSSIBLE AND DETENT POSITION



TITLE KO126A W / 11.8 SHAFT				
SCALE	DATE	DR	DWG	REV
2:1	8/27/2009	BLR	K600103	A

A	18624	Released For Production	8/27/09	BLR
REV	PCR NO	DESCRIPTION	DATE	BY
THE INFORMATION CONTAINED IN THIS DOCUMENT IS PROPRIETARY TO E-SWITCH AND IS NOT TO BE COPIED OR TRANSFERRED				