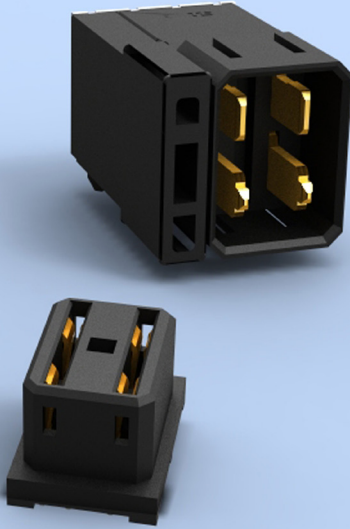


Introducing Impact Power Connectors

The Impact Power connectors are designed to compliment the Impact high speed backplane connector product family. These robust power connectors are available with 15 Amp or 20 Amp contacts to compliment the 3 pair and 4 pair signal connectors, respectively. The versatile Impact power backplane connector is now available for right angle board-to-board applications.



Impact Power Connectors



FEATURES AND BENEFITS

- Compliant, press fit tails
- Designed for board-to-board right-angle applications
- Contact sequencing
- Recommended PCB thickness 1.60 – 2.80 mm
- Hold-down for added mechanical reliability

TE Technical Support Center

Internet:	www.te.com/help
USA:	+1 (800) 522-6752
Canada:	+1 (905) 475-6222
Mexico:	+52 (0) 55-1106-0800
Latin/S. America:	+54 (0) 11-4733-2200
Germany:	+49 (0) 6251-133-1999
UK:	+44 (0) 800-267666
France:	+33 (0) 1-3420-8686
Netherlands:	+31 (0) 73-6246-999
China:	+86 (0) 400-820-6015

www.te.com

© 2012 Tyco Electronics Corporation, a TE Connectivity Ltd. company. All Rights Reserved.
2-1773457-5 DATA COMM PDF 08/2012
IMPACT is a trademark of Molex, Inc.

TE Connectivity and the TE connectivity (logo) are trademarks. Other logos, product and/or company names might be trademarks of their respective owners.

APPLICATIONS

- Switches and routers
- Servers/blade servers

MATERIALS

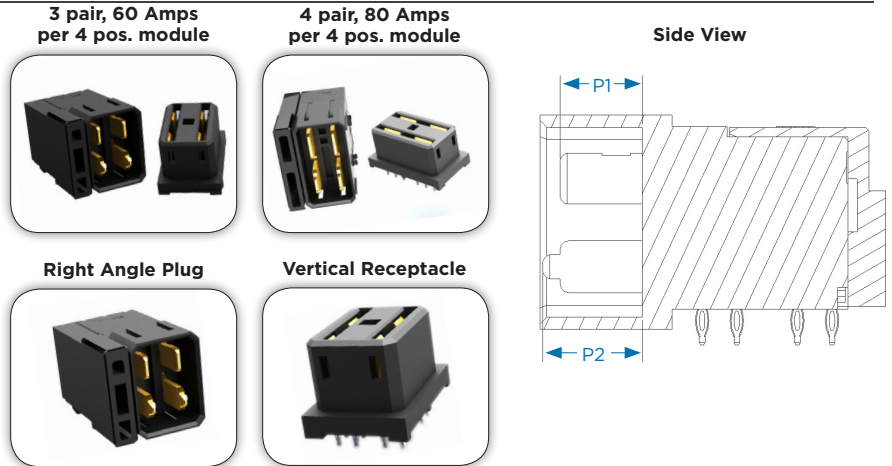
- Mating interface : 30µ inches gold over 50µ inches nickel
- Compliant press-fit tails : Tin over nickel

PRODUCT OFFERING

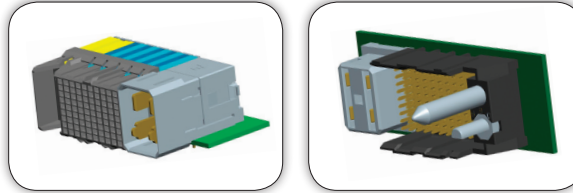
Part Numbers	Configuration	Style	P1*	P2*
2169806-1	3 Pair	Vertical Receptacle	--	--
2180850-1	3 Pair	Right Angle Plug - Left Hold Down	6.90	6.90
2180851-1	3 Pair	Right Angle Plug - Right Hold Down	6.90	6.90
2169809-1	4 Pair	Vertical Receptacle	--	--
2180490-1	4 Pair	Right Angle Plug - Right Hold Down	6.90	6.90
2180488-1	4 Pair	Right Angle Plug - Left Hold Down	6.90	6.90

*See diagram below for P1 vs. P2 locations

PRODUCT DIMENSIONS



Impact power connectors are complimentary parts to the Impact high density backplane connector products.



For more information on the entire Impact line please visit www.te.com/products/impact



While TE has made every reasonable effort to ensure the accuracy of the information in this brochure, TE does not guarantee that it is error-free, nor does TE make any other representation, warranty or guarantee that the information is accurate, correct, reliable or current. TE reserves the right to make any adjustments to the information contained herein at any time without notice. TE expressly disclaims all implied warranties regarding the information contained herein, including, but not limited to, any implied warranties of merchantability or fitness for a particular purpose. The dimensions in this catalog are for reference purposes only and are subject to change without notice. Specifications are subject to change without notice. Consult TE for the latest dimensions and design specifications.