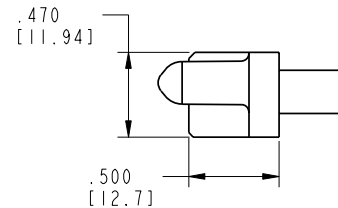
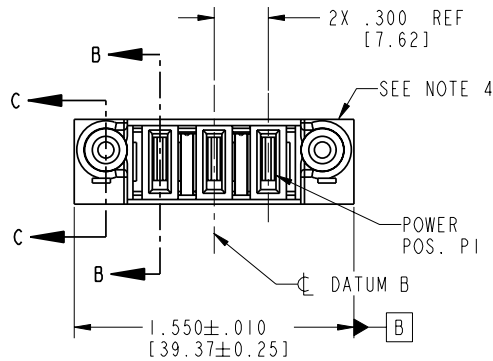
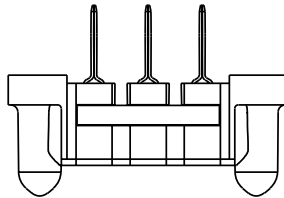


Tous droits strictement réservés. Reproduction ou communication o des tiers interdite sous quelque forme que ce soit sans autorisation écrite du propriétaire. Propriété de c FCI. Droits de reproduction FCI.



All rights strictly reserved. Reproduction or issue to third parties in any form whatever is not permitted without written authority from the proprietor. Property of FCI. Copyright FCI.

PRODUCT NO.	POWER				
	E2	P3	P2	P1	E1
51897-008 NOTE: (3)		PH	PG	PH	



CODE	DIM "M" MATING LENGTH	CONTACT TYPE
PG	.042 [1.07]	POWER
PH	.092 [2.34]	POWER

mat'l code				SEE NOTE 2		tolerances unless otherwise specified		CUSTOMER		FCI	
lir	ecn no.	dr	date	linear	.XX±.01/0.X±0.3	COPY		www.fciconnect.com		title	
A	V03-1204	TAB	11/07/03		.XXX±.005/0.XX±0.13	projection		3ACP		VERTICAL RECEPTACLE	
B	V03-1298	TAB	12/09/03		.XXX±.002/0.XXX±0.051	INCH/MM		product family		PwrBlade	
C	DG05-0232	SJ	07/20/05	angles	0° ± 2°	scale		size		213	
D	DG06-0334	RYAN	08/14/06	dr	T. BRUNGARD 11/07/03	1:1		dwg no		51897-008	
				enrg	M. GRAY 11/07/03			sheet		1 of 4	
				chr	M. GRAY 11/07/03			cage code		22526	
				appd	M. GRAY 11/07/03						
sheet index	revision	D	D	D	D						
	sheet	1	2	3	4						

Pro/E

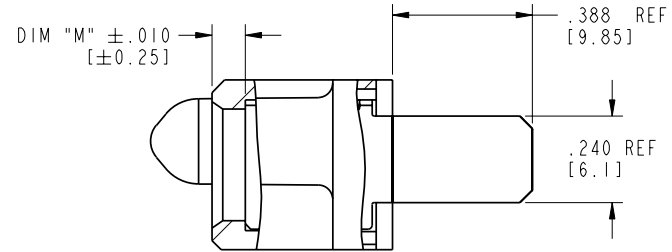
cage code 22526

Tous droits strictement reserves. Reproduction ou communication a des tiers interdite sous quelque forme que ce soit sans autorisation ecrite du proprietaire. Propriete de c FCI. Droits de reproduction FCI.

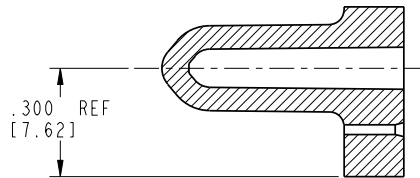


All rights strictly reserved. Reproduction or issue to third parties in any form whatever is not permitted without written authority from the proprietor. Property of FCI. Copyright FCI.

PRODUCT NUMBER
51897-008--
NOTE: ③



SECTION B-B
SCALE 2:1



SECTION C-C
SCALE 2:1

mat'l code				SEE NOTE 2		tolerances unless otherwise specified		CUSTOMER		FCI	
lfr	ecr no.	dr	date	linear	.XX±.01/0.X±0.3	COPY		www.fciconnect.com		title	
D					.XXX±.005/0.XX±0.13	projection		3ACP		VERTICAL RECEPTACLE	
				angles	.XXX±.002/0.XXX±0.051	INCH/MM		product family		PwrBlade	
				dr	0°±2°	scale		size		code	
				enrg	T. BRUNGARD 11/07/03	1:1		dwg no		213	
				chr	M. GRAY 11/07/03			51897-008		sheet	
				appd	M. GRAY 11/07/03			A		2 of 4	
sheet index		revision sheet									

cage code 22526

Pro/E

Tous droits strictement reserves. Reproduction ou communication a des tiers interdite sous quelque forme que ce soit sans autorisation écrite du propriétaire. Propriete de c FCI. Droits de reproduction FCI.



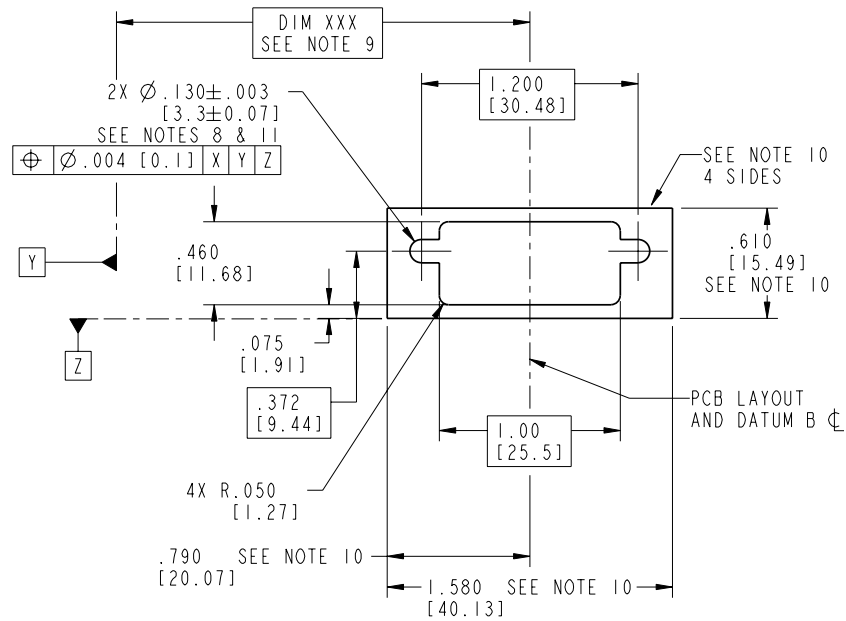
All rights strictly reserved. Reproduction or issue to third parties in any form whatever is not permitted without written authority from the proprietor. Property of FCI. Copyright FCI.

PRODUCT NUMBER
51897-008--
NOTE: (3)

1 | 2

3 |

4



mat'l code				SEE NOTE 2		tolerances unless otherwise specified		CUSTOMER		FCI	
lfr	ecn no.	dr	date	linear	.XX±.01/0.X±0.3	COPY		www.fciconnect.com		title	
D					.XXX±.005/0.XX±0.13	projection		3ACP		VERTICAL RECEPTACLE	
				angles	.XXX±.002/0.XXX±0.051	INCH/MM		product family		PwrBlade	
				dr	0°±2°	scale		size		code	
				enrg	T. BRUNGARD 11/07/03	1:1		A		213	
				chr	M. GRAY 11/07/03			51897-008		sheet	
				appd	M. GRAY 11/07/03					3 of 4	
sheet index		revision sheet									

A

A

B

B

1 | 2

3 |

4

Pro/E

cage code 22526

Tous droits strictement réservés. Reproduction ou communication à des tiers interdite sous quelque forme que ce soit sans autorisation écrite du propriétaire. Propriété de c FCI. Droits de reproduction FCI.



All rights strictly reserved. Reproduction or issue to third parties in any form whatever is not permitted without written authority from the proprietor. Property of FCI. Copyright FCI.

PRODUCT NUMBER
51897-008--
NOTE: ③

NOTES:

1. DIMENSIONS AND TOLERANCES ARE IN ACCORDANCE WITH ASME Y14.5M, 1994 UNLESS OTHERWISE SPECIFIED.

CONNECTOR NOTES:

- ② HOUSING MATERIAL: UL 94 V-0 GLASS FILLED
HIGH-TEMP THERMOPLASTIC
POWER CONTACT MATERIAL: COPPER ALLOY
SIGNAL PIN MATERIAL: COPPER ALLOY
- 3. PLATING:
SEE PRINT 10064183 FOR PLATING SPEC OF 51897-008; 51897-008LF
- ④ MANUFACTURER'S NAME, P/N, AND DATE CODE TO APPEAR ON THIS SURFACE.
- 5. PRODUCT SPECIFICATION GS-12-149.
APPLICATION SPECIFICATION BUS-20-067.
- 6. PACKAGED IN TRAYS.

PCB NOTES:

- 7. ALL HOLE DIAMETERS ARE FINISHED HOLE SIZE.
- ⑧ MOUNTING HOLES, WHERE APPLICABLE, ARE UNPLATED.
- ⑨ "DIM XXX" TO BE DETERMINED BY THE CUSTOMER.
- ⑩ CONNECTOR KEEP-OUT ZONE.
- ⑪ RECOMMENDED RETENTION TO PCB
Ø.13[3.3] THRU HOLE FOR #5 SOCKET HEAD CAP SCREW
MAX. HEAD .205[5.21] RECOMMENDED SCREW LENGTH 12mm [1.472] + PCB THICKNESS.
RECOMMENDED SCREW SEATING TO PCB TORQUE: 2-5 lbf-in (2300-5760 gf-cm).

mat'l code				SEE NOTE 2		tolerances unless otherwise specified		CUSTOMER		FCI	
lfr	ecn no.	dr	date	linear	.XX±.01/0.X±0.3	COPY		www.fciconnect.com		title	
D					.XXX±.005/0.XX±0.13	projection		3ACP		VERTICAL RECEPTACLE	
				angles	.XXX±.002/0.XXX±0.051	INCH/MM		product family		PwrBlade	
				dr	0°±2°	scale		size		213	
				enrg	T. BRUNGARD 11/07/03	1:1		dwg no		sheet	
				chr	M. GRAY 11/07/03			51897-008		4 of 4	
				appd	M. GRAY 11/07/03						
sheet index		revision sheet									

cage code 22526

Pro/E