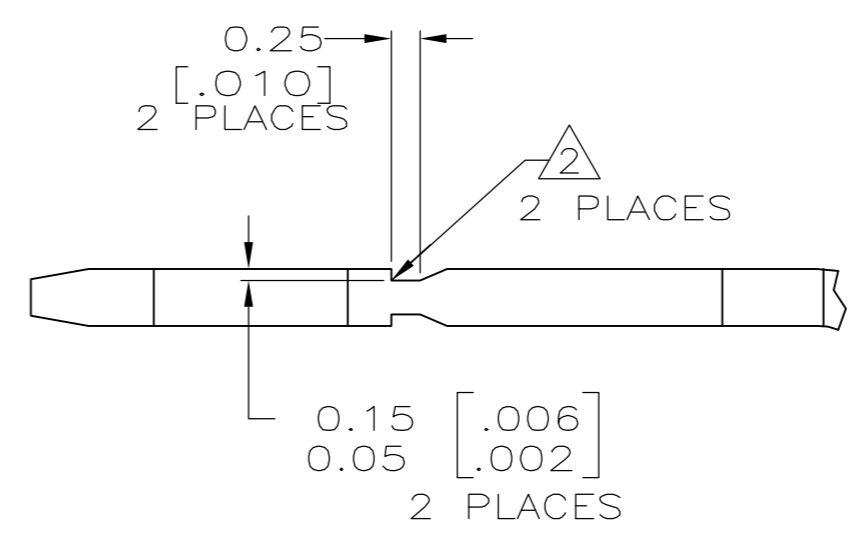
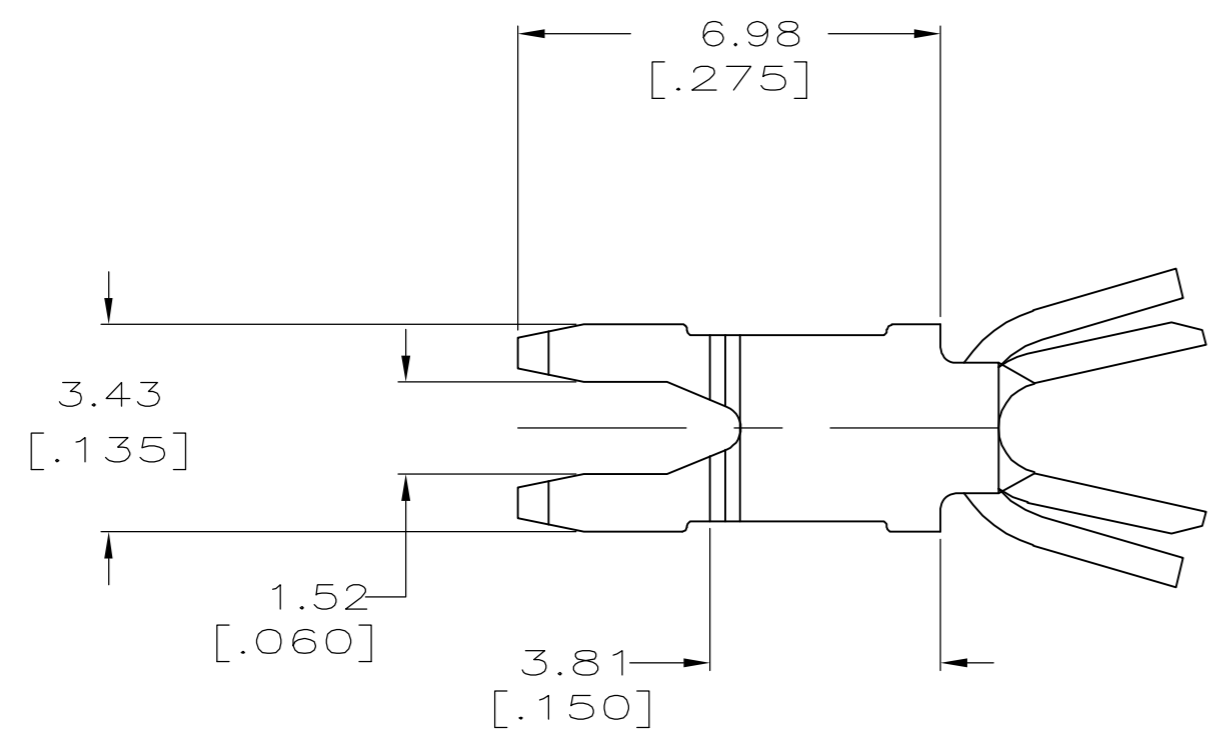


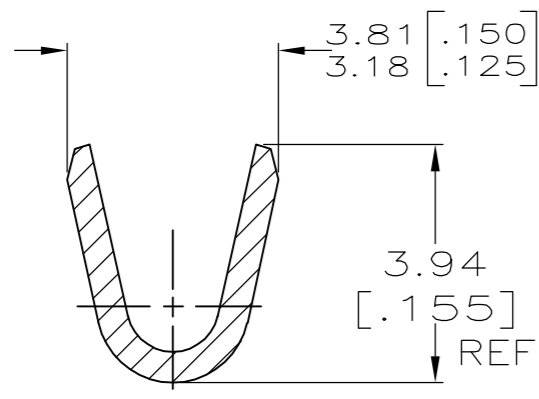
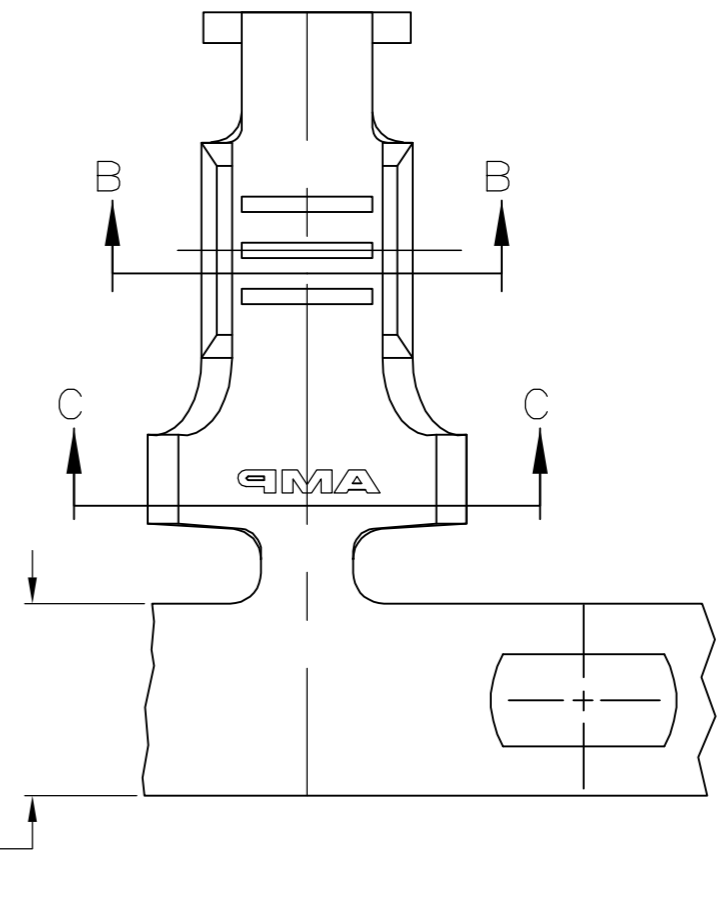
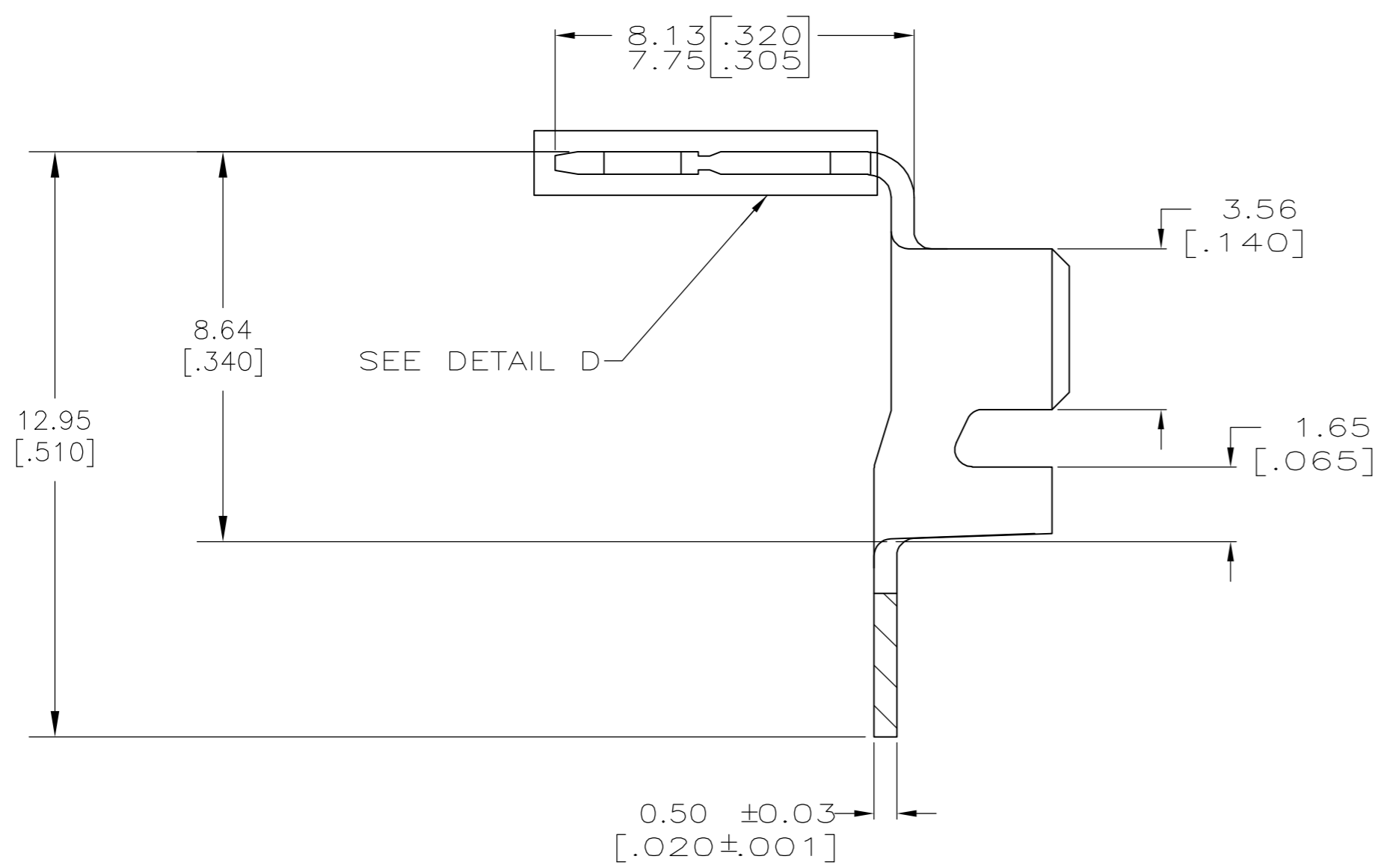
THIS DRAWING IS UNPUBLISHED. RELEASED FOR PUBLICATION
 © COPYRIGHT BY TYCO ELECTRONICS CORPORATION. ALL RIGHTS RESERVED.

LOC	DIST	REVISIONS			
P	LTR	DESCRIPTION	DATE	DWN	APVD
AF	50	J1	REVISED PER ECR-06-029896	03JAN07	MF KR

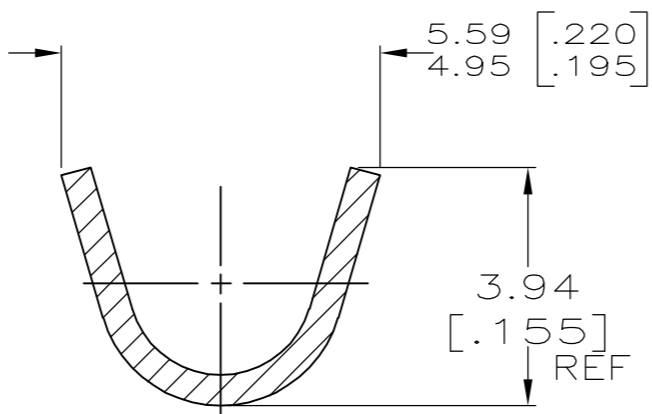
1 CONTINUOUS STRIP ON REELS WITH TERMINALS LOCATED ON 9.14±0.08 [.360±.003] CENTERS
 △ FOR OPTIMUM RETENTION IN POKE-IN TYPE MAG-MATE TERMINALS, THE SERRATION AS SHOWN MUST BE ENGAGED WITH THE EDGE OF THE LEAF



DETAIL D
SCALE 15:1



SECTION B-B



SECTION C-C

OBSOLETE	REVERSE	#18-#14 AWG	2.29-3.56 DIA [.090-.140]	63458-2
	STANDARD	#18-#14 AWG	2.29-3.56 DIA [.090-.140]	63458-1
	REELING	WIRE RANGE	INSULATION RANGE	PART NUMBER
THIS DRAWING IS A CONTROLLED DOCUMENT.		DWN MICHAEL S. FEHER 22DEC97	Tyco Electronics Corporation Harrisburg, PA 17105-3608	
DIMENSIONS: INCHES		CHK RICHARD GRZYBOWSKI 20JAN98	NAME NELSON E. NEFF 21JAN98	
TOLERANCES UNLESS OTHERWISE SPECIFIED:		PRODUCT SPEC 108-22045		
0 PLC ± -		APPLICATION SPEC 114-2050		
1 PLC ± -		SIZE A2		
2 PLC ± 0.25[.010]		CAGE CODE 00779		
3 PLC ± -		DRAWING NO C=63458		
4 PLC ± -		RESTRICTED TO -		
ANGLES ± -		SCALE 8:1		
FINISH 0.000381 [.000015] MIN PRE-TIN PLATE		SHEET 1 of 1		
MATERIAL 082 BRASS		REV J1		
CUSTOMER DRAWING				