

5	6	7	8
COUNT	DESCRIPTION OF REVISIONS	BY	CHKD

5	6	7	8
COUNT	DESCRIPTION OF REVISIONS	BY	CHKD

5	6	7	8
COUNT	DESCRIPTION OF REVISIONS	BY	CHKD

5	6	7	8
COUNT	DESCRIPTION OF REVISIONS	BY	CHKD

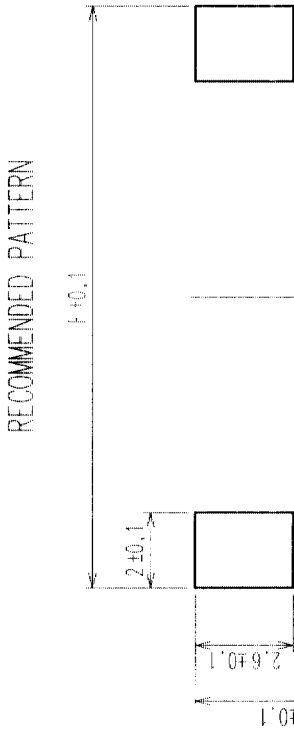
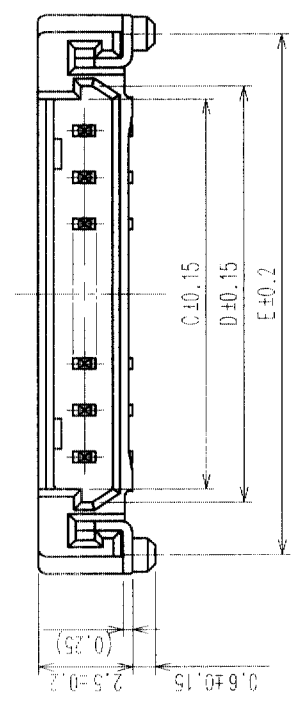
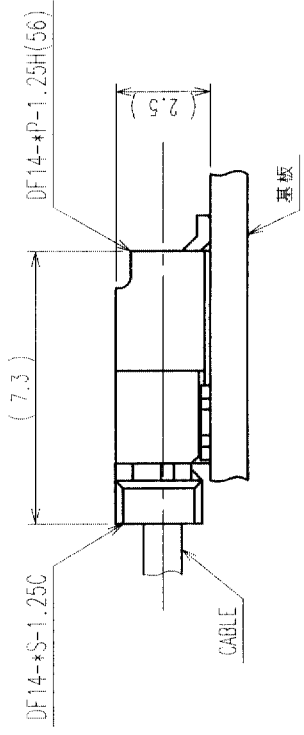
5	6	7	8
COUNT	DESCRIPTION OF REVISIONS	BY	CHKD

5	6	7	8
COUNT	DESCRIPTION OF REVISIONS	BY	CHKD

5	6	7	8
COUNT	DESCRIPTION OF REVISIONS	BY	CHKD

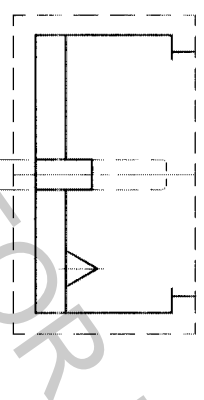
5	6	7	8
COUNT	DESCRIPTION OF REVISIONS	BY	CHKD

2 APPLICATION PATTERN

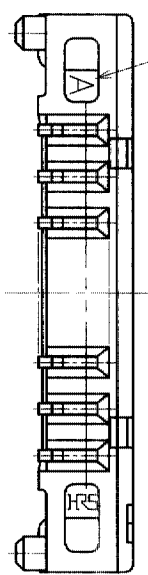
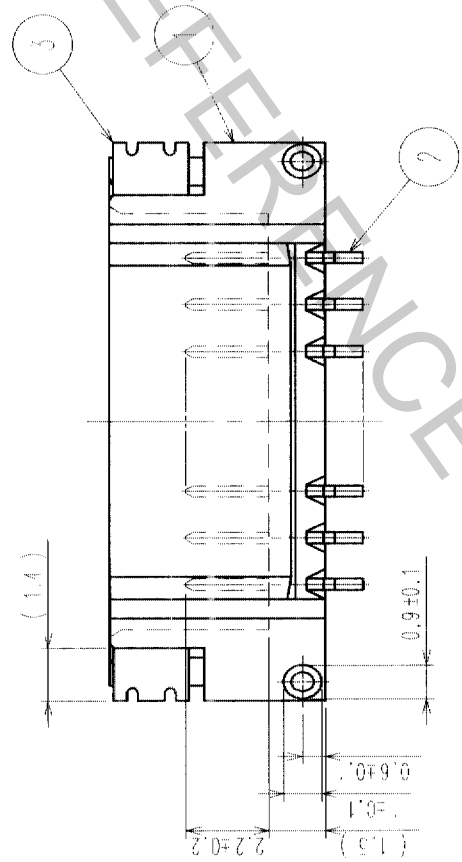
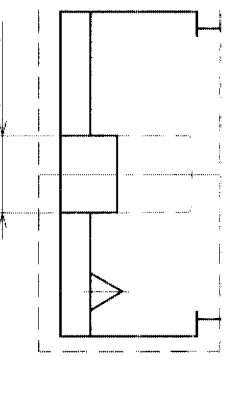


RECOMMENDED PATTERN

3 2 CONTACTS (0.8)



3 3 CONTACTS (2.05)



NOTE 1. LEAD CO-PLANALITY INCLUDE REINFORCED METAL FITTING SHALL BE 0.1 MAX.
 2. WHEN THIS CONNECTOR MATES WITH DF14-S-1.25C, THE MATING LENGTH IS 7.3mm.
 3. FOR CONNECTORS, 2 OR 3 CONTACTS, SIMPLIFIED LOCK HOLE SHALL BE SET AT THE CENTER OF HOUSING.

2	BRASS	CONTACT AREA: GOLD PLATED 0.1µm min LEAD AREA: TIN-COPPER PLATED 1µm min	5	POLYESTER	CLEAR(COVER TAPE)
1	POLYAMIDE	UNDER PLATING: NICKEL PLATED 1µm min BEIGE, UL94V-0	3	PHOSPHOR BRONZE	(EMBOSSED CARRIER TAPE)
NO.	MATERIAL	FINISH, REMARKS	NO.	MATERIAL	FINISH, REMARKS

CL	CL	CL	CL	CL	CL
CODE NO. (OLD)	CODE NO.	DESIGNED	CHECKED	APPROVED	RELEASED

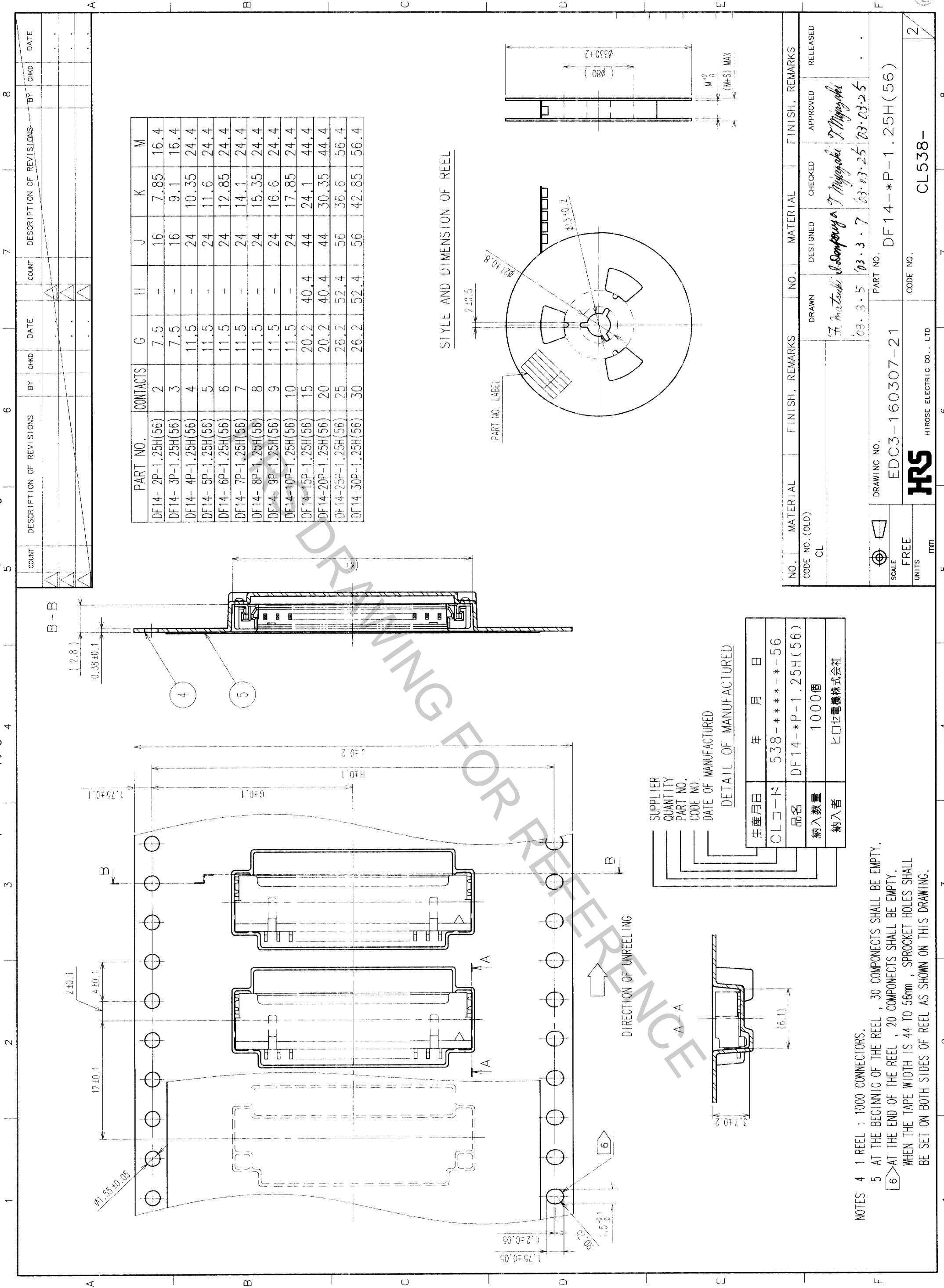
5	6	7	8
SCALE	DRAWING NO.	PART NO.	DATE
5 : 1	EDC3-160307-21	DF14-*P-1.25H(56)	
UNITS			

5	6	7	8
UNITS			
mm			

CL538-

1/2

NO



STYLE AND DIMENSION OF REEL

PART NO.	CONTACTS	G	H	J	K	M
DF14-2P-1.25H(56)	2	7.5	-	16	7.85	16.4
DF14-3P-1.25H(56)	3	7.5	-	16	9.1	16.4
DF14-4P-1.25H(56)	4	11.5	-	24	10.35	24.4
DF14-5P-1.25H(56)	5	11.5	-	24	11.6	24.4
DF14-6P-1.25H(56)	6	11.5	-	24	12.85	24.4
DF14-7P-1.25H(56)	7	11.5	-	24	14.1	24.4
DF14-8P-1.25H(56)	8	11.5	-	24	15.35	24.4
DF14-9P-1.25H(56)	9	11.5	-	24	16.6	24.4
DF14-10P-1.25H(56)	10	11.5	-	24	17.85	24.4
DF14-15P-1.25H(56)	15	20.2	40.4	44	24.1	44.4
DF14-20P-1.25H(56)	20	20.2	40.4	44	30.35	44.4
DF14-25P-1.25H(56)	25	26.2	52.4	56	36.6	56.4
DF14-30P-1.25H(56)	30	26.2	52.4	56	42.85	56.4

SUPPLIER		DETAIL OF MANUFACTURED	
QUANTITY	PART NO.	年	月
538-*****-56	DF14-*P-1.25H(56)		
1000個			
納入者		ヒロセ電機株式会社	

NOTES 4 1 REEL : 1000 CONNECTORS.
 5 AT THE BEGINNIG OF THE REEL , 30 COMPONENTS SHALL BE EMPTY.
 6 AT THE END OF THE REEL , 20 COMPONENTS SHALL BE EMPTY.
 WHEN THE TAPE WIDTH IS 44 TO 56mm , SPROCKET HOLES SHALL BE SET ON BOTH SIDES OF REEL AS SHOWN ON THIS DRAWING.

NO.	MATERIAL	FINISH, REMARKS	NO.	MATERIAL	FINISH, REMARKS
CL					

CODE NO. (OLD)	DRAWN	DESIGNED	CHECKED	APPROVED	RELEASED
	F. Matsuda	S. Sato	T. Miyaguchi	T. Miyaguchi	
	03.3.5	03.3.7	03.03.25	03.03.25	

DRAWING NO.	PART NO.
EDC3-160307-21	DF14-*P-1.25H(56)

SCALE	UNITS	CODE NO.
FREE	ITM	CL538-

TO