

PRODUCT NUMBER
77709-YXXLF

RoHS COMPLIANT & COMPATIBLE, SEE NOTE 8

PIN STYLE SEE TABLE SHEET 2

PLATING:

1 = 0.76µm FULL GOLD/GXT

3 = 2.0µm MIN MATTE TIN FULL PLATED

7 = 0.13µm FULL GOLD

8 = 0.38µm FULL GOLD/GXT

G = 0.25µm GOLD/GXT ON CONTACT AREA, 2µm MIN MATTE TIN ON TAIL

1.27µm NICKEL MIN UNDERLAYER FOR ALL PLATING VERSIONS

NOTES:

1. HOUSING MAT'L : HIGH TEMPERATURE THERMOPLASTIC
FLAME RETARDANT PER UL94-V0, COLOR BLACK.

2. PIN MATERIAL : PHOSPHOR BRONZE.

3. STANDARD PACKAGING IN POLYBAG

4. RoHS COMPATIBLE PRODUCT SPECIFICATIONS

a - SUFFIX "LF" IS ADDED JUST FOR EASY

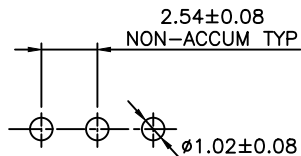
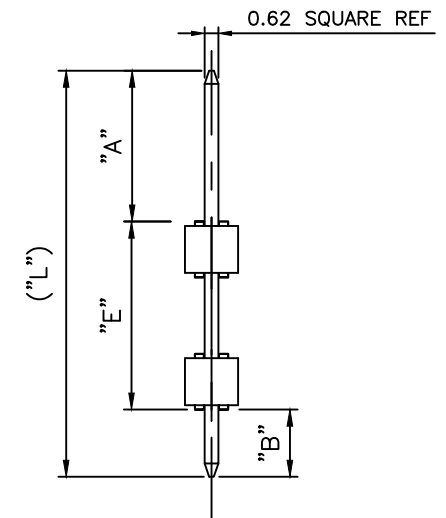
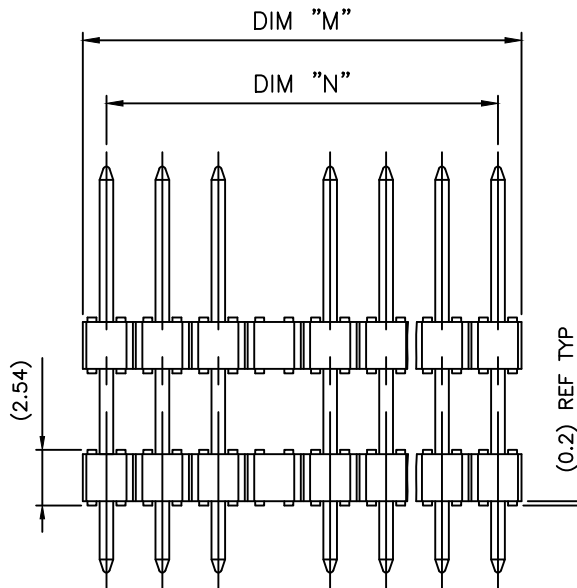
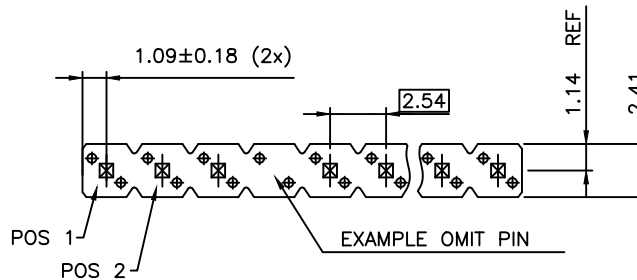
b - MANUFACTURING PROCESS COMPATIBILITY

- THE HOUSING WILL WITHSTAND EXPOSURE TO
260°C ±5°C SOLDER BATH TEMPERATURE FOR
5 SECONDS IN A WAVE SOLDER APPLICATION
WITH A 1.6mm MIN THICK CIRCUIT BOARD.

c - LABELING:

- MEETS PACKAGING SPECS AS PER GS-14-920

d - LEGAL STATEMENT: SEE GS-47-0004



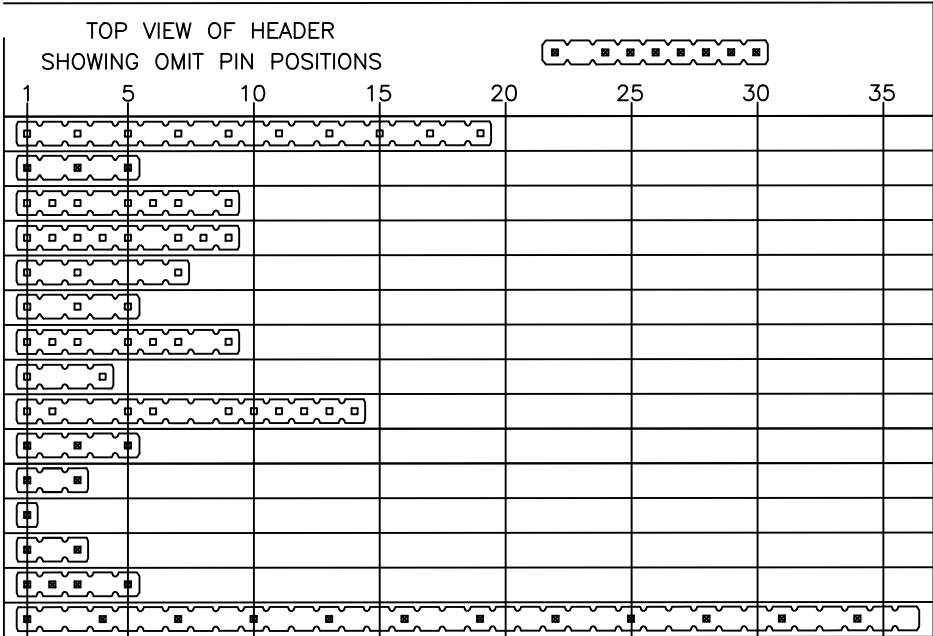
RECOMMENDED HOLE PATTERN

PRELIMINARY

mat'l. code		surface		tolerance		projection		product family	
		ISO 1302		ISO 406		ISO 1101		BSTIK	
ltr		ecn no		dr		date		title	
W		F-22318		AMA		15.10.27		HEADER SR,STR	
X		F-23461		LMU		16.03.07		DOUBLE BODY POL	
Y		F-24446		AMA		16.07.05			
AA		F-26438		LMU		17.03.22		dr	
AB		F-28033		DDE		17.09.25		enfr	
								O MATHEVON	
								96.04.01	
								chr	
								JCO	
								96.04.01	
								appd	
								JMC	
								96.04.01	
sheet		revision		AB		Y			
index		sheet		1		2			



PIN STYLE	NB OF POS	PRODUCT DEFINITION					
		"A" ±0.2	"E" ±0.25	"B" ±0.25	("L") REF	("M") REF	("N") REF
21	1x 19	3.0	20.3	2.75	26.04	48.26	45.72
22	1x 05	4.95	6.00	4.95	15.90	12.70	10.16
23	1x 09	4.95	6.00	4.95	15.90	22.86	20.32
24	1x 09	3.10	11.45	3.10	17.65	22.86	20.32
25	1x 07	3.10	11.45	3.10	17.65	17.78	15.24
26	1x 05	8.60	6.00	8.60	23.20	12.70	10.16
27	1x 09	8.60	6.00	8.60	23.20	22.86	20.32
28	1x 04	15.20	12.00	3.60	30.80	10.16	7.62
29	1x 14	15.20	12.00	3.60	30.80	35.56	33.02
30	1x 05	3.00	13.00	3.00	19.00	12.70	10.16
31	1x 03	3.05	6.50	3.05	12.60	7.62	5.08
32	1x 01	3.05	6.50	3.05	12.60	2.54	N/A
33	1x 03	3.05	5.08	3.05	11.18	7.62	5.08
34	1x 05	7.36	11.43	2.29	21.08	12.70	10.16
35	1x 36	8.07	20.00	3.05	31.12	91.44	88.90



Copyright FCI

mat'l. code		surface ISO 1302 <input checked="" type="checkbox"/> ISO 406 ISO 1101		tolerance ISO 406 ISO 1101		projection 		product family BSTIK		
ltr	ecn no	dr	date	tolerances unless otherwise specified		mm 		title HEADER SR,STR DOUBLE BODY POL		
X	F-26438	LMU	17.03.22	angles	Linear	scale 1:1		dwg no 77709		
Y	F-28033	DDE	17.09.25					sheet 2 of 2 size A3		
				dr	O MATHEVON	96.04.01			type CUSTOMER Drawing	
				engr	COMPAGNON.J	96.04.01				
				chr	JCO	96.04.01				
				appd	JMC	96.04.01				
sheet	revision									
index	sheet									