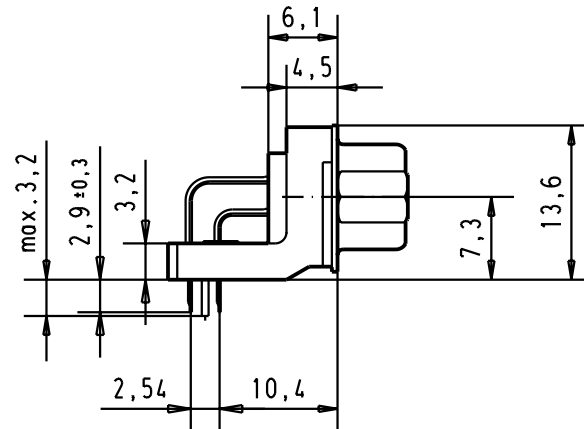
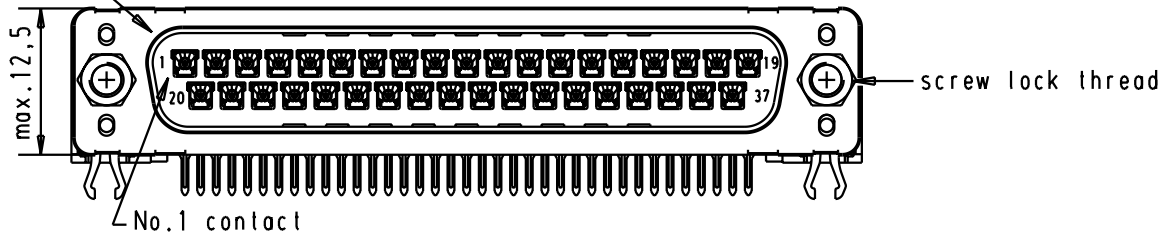
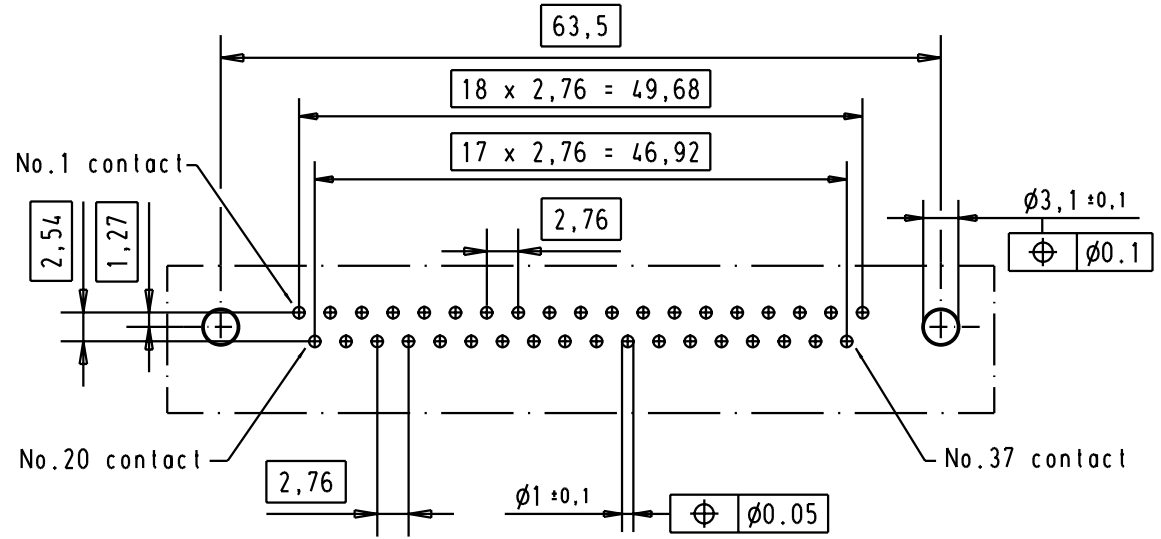
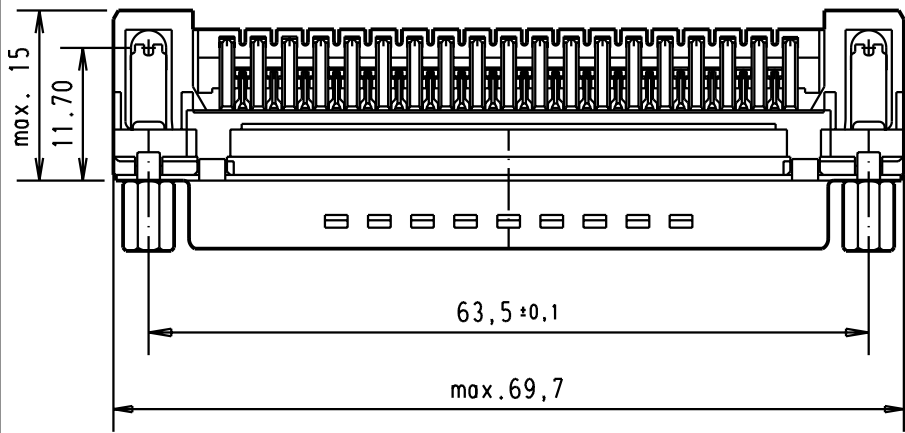


5 4 3 2 1

Mating face according to : MIL-C-24308 / DIN 41652 / CECC 75301-802



Printed board layout component side



Connector retention and insertion forces on the PCB = 25 / 80 newtons

|   |                |                   |                   |       |          |      |                               |  |  |  |  |                        |
|---|----------------|-------------------|-------------------|-------|----------|------|-------------------------------|--|--|--|--|------------------------|
| A | 09 65 466 6833 | M3                | 2                 |       |          |      |                               |  |  | <p>All Dim. in mm<br/>Orig. Size DIN A 4</p> | D-Sub, high temperature, male, standard, 37 poles, with solder pins 2.9, screw lock and grounding board lock | Maßstab/Scale<br>1.5:1 |
|   | 09 65 466 7833 | M3                | 3                 |       |          |      |                               |  |  |  |  |                        |
|   | 09 65 466 5833 | M3                | 0.76 µm Au        |       |          |      |                               |  |  |  |  |                        |
|   | 09 65 466 6813 | 4-40 UNC          | 2                 |       |          |      |                               |  |  |  |  |                        |
|   | 09 65 466 7813 | 4-40 UNC          | 3                 |       |          |      |                               |  |  |  |  |                        |
|   | 09 65 466 5813 | 4-40 UNC          | 0.76 µm Au        | 31084 | 04/09/02 | YT   |                               |  |  |  |  |                        |
|   | Part number    | Screw lock thread | Performance level | Mod.  | Dat.     | Name | HARTING EURL<br>F-95972 Paris |  |  |  | TB 0965466x8x3   | Blatt/ Page<br>1 /     |
|   |                |                   |                   |       |          |      | Sub.                          |  |  |  |  |                        |