



## Anaren Integrated Radio Evaluation Module Series



### A1101R09C-EM1

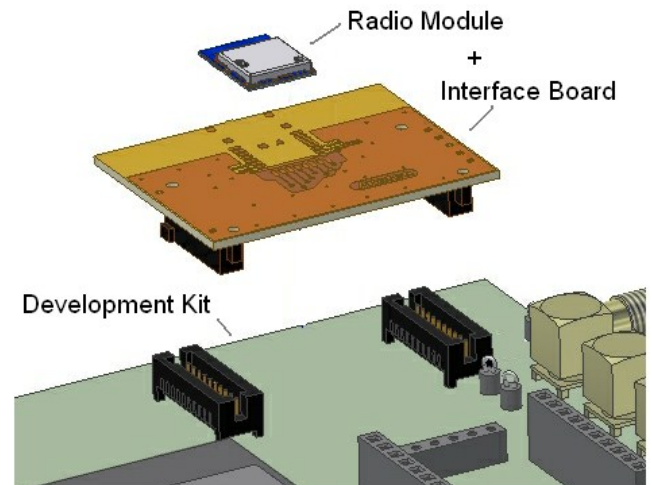
The A1101R09C-EM1 is a high-performance, interface board with an FCC-certified A1101R09C connectorized radio module mounted for quick connection to the Texas Instruments CC1101DK Development Kit.

#### Product Overview

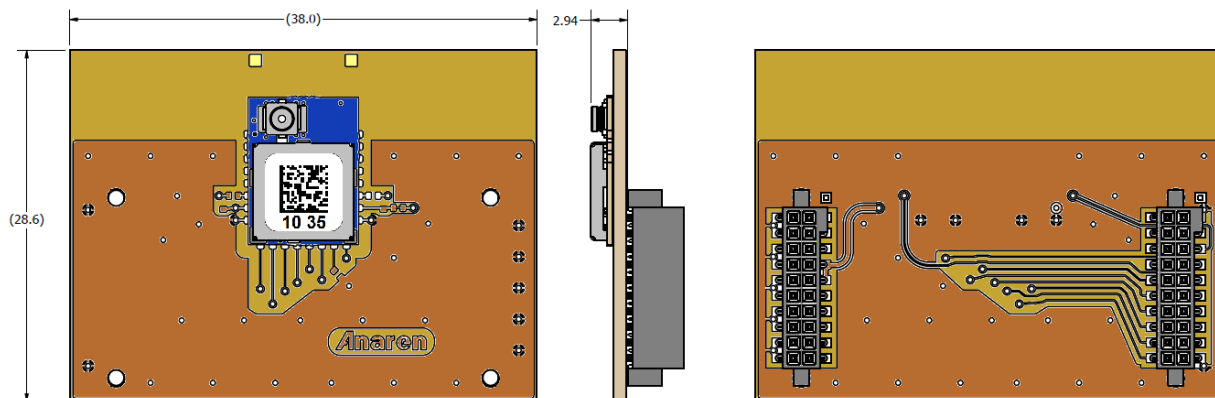
The A1101R09C-EM1 is an evaluation module with an Anaren A1101R09C radio module in the industry's smallest package (9 x 12 x 2.5mm) mounted on it. This evaluation module is designed specifically for compatibility with SmartRF<sup>®</sup>04, SmartRF<sup>®</sup>05 and MAVRK evaluation boards. Each Anaren A1101R09C module is FCC-certified and incorporates the Texas Instruments CC1101 transceiver chip.

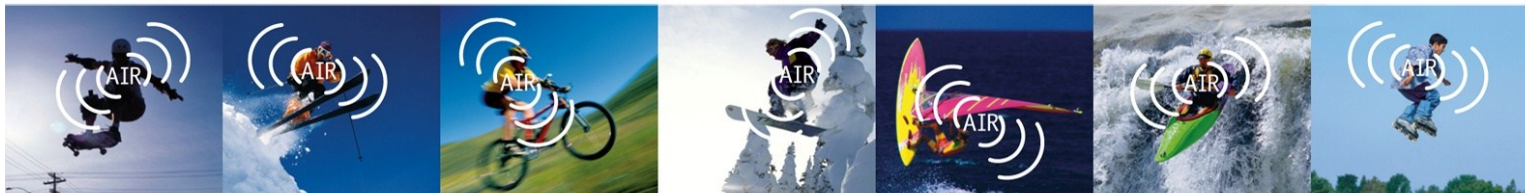
As a stand-alone module for your final design implementation, Anaren's A1101R09C has an LGA pad footprint with an industry-standard U.FL button connector receptacle. This module is designed to effortlessly integrate into a wide range of applications, including: industrial control, building automation, low-power wireless sensor networks, lighting control, and automated meter reading.

The A1101R09C has an RoHS-compliant ENIG finish and is packaged on tape & reel or in matrix tray for high-volume automated manufacturing.



#### Layout





## Anaren Integrated Radio

### Pin Diagram

#### Development Kit Connectors




#### Connector P1

|        |              |
|--------|--------------|
| Pin 1  | GND          |
| Pin 2  | NC           |
| Pin 3  | NC           |
| Pin 4  | NC           |
| Pin 5  | NC           |
| Pin 6  | NC           |
| Pin 7  | NC           |
| Pin 8  | NC           |
| Pin 9  | NC           |
| Pin 10 | GDO0/ATEST   |
| Pin 11 | NC           |
| Pin 12 | GDO2 (Debug) |
| Pin 13 | NC           |
| Pin 14 | CSn          |
| Pin 15 | NC           |
| Pin 16 | SCLK         |
| Pin 17 | NC           |
| Pin 18 | SI           |
| Pin 19 | GND          |
| Pin 20 | SO/GDO1      |

#### Connector P2

|        |        |
|--------|--------|
| Pin 1  | NC     |
| Pin 2  | GND    |
| Pin 3  | NC     |
| Pin 4  | GND    |
| Pin 5  | NC     |
| Pin 6  | GND    |
| Pin 7  | VDD    |
| Pin 8  | GND    |
| Pin 9  | VDD    |
| Pin 10 | GND    |
| Pin 11 | NC     |
| Pin 12 | GND    |
| Pin 13 | NC     |
| Pin 14 | GND    |
| Pin 15 | NC     |
| Pin 16 | GND    |
| Pin 17 | NC     |
| Pin 18 | NC     |
| Pin 19 | NC     |
| Pin 20 | DD_DIR |

 This product is not to be used in any implantable medical device or external medical device intended to regulate or monitor biological functions, including but not limited to devices such as pacemakers, defibrillators, cardiac resynchronization devices, pressure sensors, biochemical stimulators and neurostimulators. ANAREN MAKES NO WARRANTY OF FITNESS OR MERCHANTABILITY OF THIS PRODUCT FOR ANY USE OF THIS TYPE. Anaren shall not be responsible for any consequential damages arising from the sale or use of this product for any use of this type. The ultimate user of the product assumes all risk of personal injury or death arising from a prohibited use.

### Nomenclature

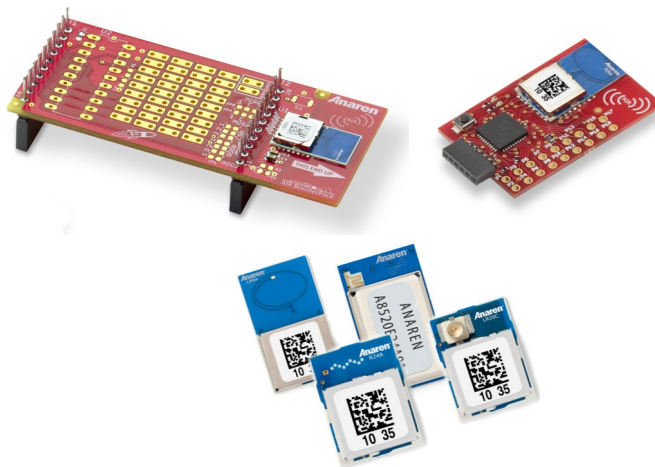
**A1101R09C-EM1**

① ② ③ ④ ⑤

|   |   |
|---|---|
| A | (Anaren)  |
| 1 | Chip series (CC1101, CC110L, CC2500)                  |
| 2 | Function (R = radio only)                             |
| 3 | Frequency band (x100MHz)                              |
| 4 | Form factor (A = Internal Antenna, C = Connector)     |
| 5 | Module Type (EM1 = Eval Module, EZ4x = EZ-430 Module) |

To view the entire available family of AIR Modules & Development options, please visit our website at:

<http://www.anaren.com/air>



**PLEASE NOTE:** Additional information on the Texas Instruments CC1101 Development Kit can be found in the company's latest datasheet release at <http://www.ti.com>



Caution! ESD sensitive device. Precautions should be used when handling the device in order to prevent permanent damage.

