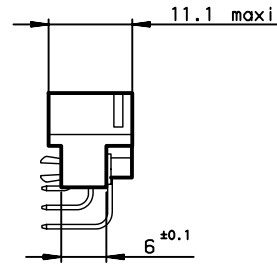
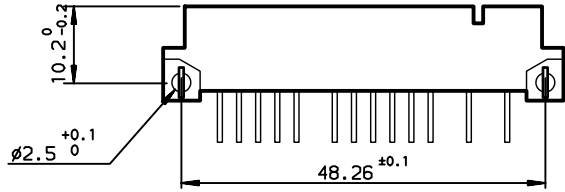
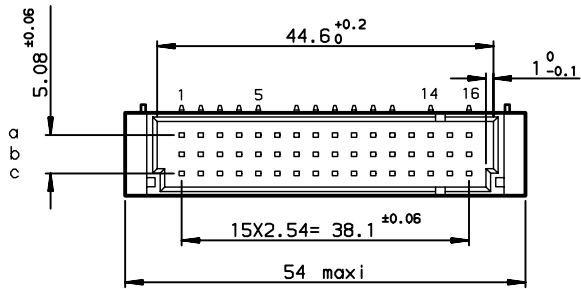
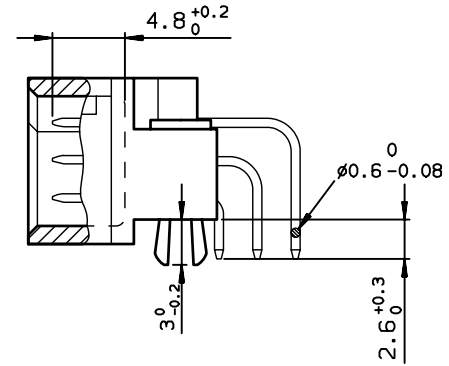


DIMENSIONS



TERMINATION



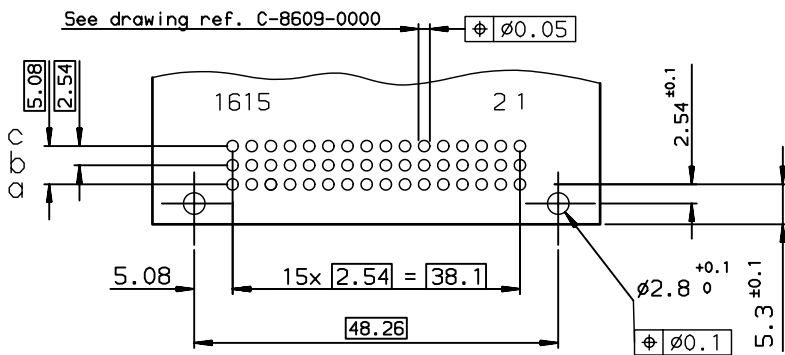
TIN LEAD PART NUMBER

PART NUMBER
86093397313H50867E1

LEAD FREE PART NUMBER

PART NUMBER
86093397313H50BYLF

P.C. CARD DRILLING (Component side view)



SPECIFICATION 867 = no contacts in position ;  
OR SPECIFICATION BY =row : a-b-c cavity : 6-13-15

GENERAL CHARACTERISTICS AND ROHS INFORMATIONS:  
SEE DRAWING C-8609-0000A

European Views

www.fciconnect.com		surface ISO 1302 ✓	tolerance std ISO 406 ISO 1101	projection mm
TOLERANCES UNLESS OTHERWISE SPECIFIED				
Dr	ROUILLARD	2001/11/16	0.X ±0.1	size A3
Eng	TARON	2001/11/16	0.XX ±0.1	Scale 1.5
Chr	LEGARE	2001/11/16	0.XXX ±0.1	ECN LS08-0036
Appr	LEGARE	2001/11/16	Product family	DIN 8609 Spec ref -
FCJ		title STANDARD MALE 3 ROW C/2		Rev. E
		39 CONTACTS		dwg no C-8609-1106
		catalog no -		CUSTOMER sheet 1 of 1

rev	ecn no	dr	date
A	-	ROU	2001/11/20
B	LS05-001	JTA	2005/03/01
C	LS05-0101	LGO	2006/06/28
D	LS06-0095	LGO	2006/06/28
E	LS08-0036	HLE	2008/01/31
-	-	-	-
-	-	-	-