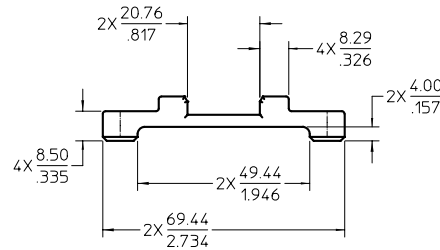
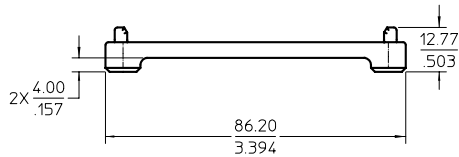
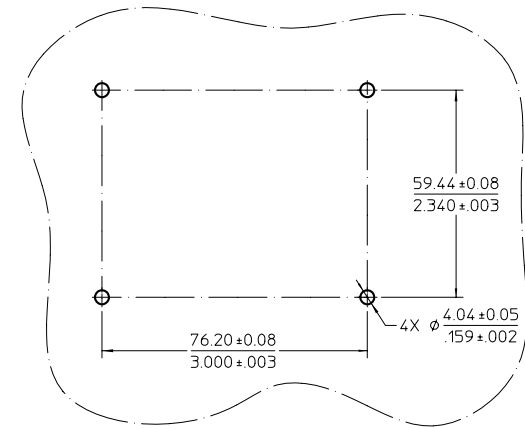
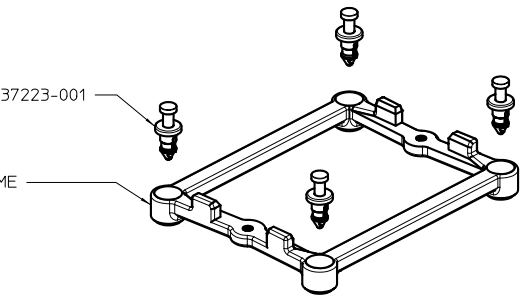


TOP VIEW SHOWN WITHOUT FASTENERS FOR CLARITY



FASTENERS
REFERENCE SD-37223-001

RETENTION FRAME



MOTHERBOARD RETENTION HOLE PATTERN

NOTES:

- ALL DIMENSIONS ON THIS DOCUMENT ARE FOR REFERENCE ONLY UNLESS OTHERWISE SPECIFIED.
- MATERIAL: ZINK ALLOY
- RETENTION FRAME USED WITH RADIAL FIN HEAT SINK 37224**** AND 37194****. REFERENCE DRAWING SD-37224-001, SD-37222-001, SD-37194-001, SD-37195-001, AND AS-37222-001.
- FRAME MOUNTS TO MOTHERBOARD WITH ITW FASTEX TUFLOKS™ REFERENCE INTEL RECOMMENDED HOLE PATTERN.
- FASTENERS SHIPPED IN POLYBAGS. 4 FASTENERS PER BAG.
- PARTS TO BE PACKAGED PER PK-37210-001.

CHART:	
MOLEX P/N:	MOUNTING HARDWARE:
372100001	NONE
372101001	TUFLOKS (QTY: 4)

EC NO: USS2002-0008 DRWN:EMERCK 2001/11/13 CHKD:DPICE 2001/11/13 APPR:MOJULLIV 2001/11/13 REV: A	QUALITY SYMBOLS -0 +0	GENERAL TOLERANCES (UNLESS SPECIFIED) mm INCH 4 PLACES ± --- ± --- 3 PLACES ± --- ± --- 2 PLACES ± --- ± --- 1 PLACE ± --- ± --- ANGULAR ± ---° DRAFT WHERE APPLICABLE MUST REMAIN WITHIN DIMENSIONS	SCALE 1:1 DESIGN UNITS INCH DIMENSION STYLE MM/IN DRAWN BY EMERCK DATE 08/15/01 CHECKED BY DPICE DATE 08/15/01 APPROVED BY DPICE DATE 08/15/01	THIRD ANGLE PROJECTION REVISE ON CAD ONLY	TITLE RETENTION FRAME FOR PENTIUM IV NORTHWOOD CPU MOLEX INCORPORATED SEE CHART DOCUMENT NO. SD-37210-001 SHEET NO. 1 OF 1
	THIS DRAWING CONTAINS INFORMATION THAT IS PROPRIETARY TO MOLEX INCORPORATED AND SHOULD NOT BE USED WITHOUT WRITTEN PERMISSION.				
	MOLEX INCORPORATED				
	MOLEX INCORPORATED				