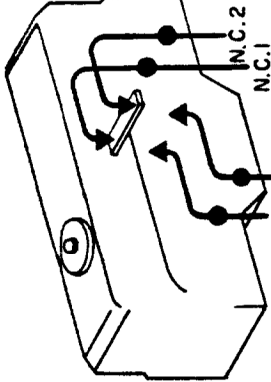


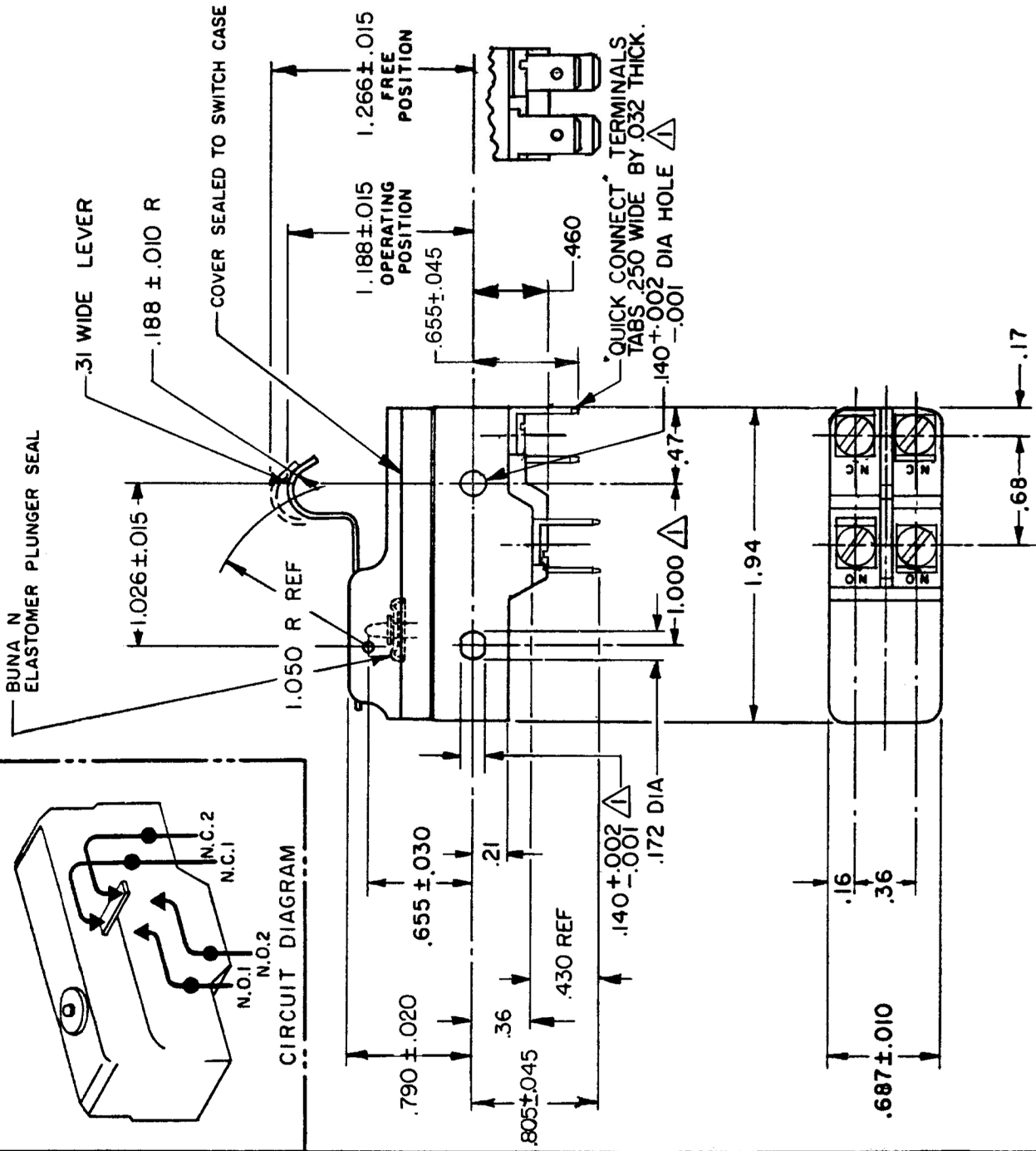
SWITCH - BASIC

MICRO SWITCH
A DIVISION OF HONEYWELL-INTERNATIONAL REGULATOR COMPANY
MILWAUKEE, WISCONSIN

FED. MFR. CODE 91929



CIRCUIT DIAGRAM



NOTE -

- 1 - MOUNTING HOLES WILL ACCEPT PINS OR SCREWS OF .139 MAX DIA ON 1.000 ± .002 CENTERS.
- 2 - SUITABLE ONLY FOR APPLICATIONS IMPARTING A RAPID STROKE TO THE SWITCH PLUNGER
- 3 - SEALED CONSTRUCTION PROVIDES SPLASH RESISTANCE

CHARACTERISTICS

OPERATING FORCE	8 1/2 OZ MAX
RELEASE FORCE	1 1/2 OZ MIN
DIFFERENTIAL TRAVEL	.008 - .030
OVERTRAVEL	.094 MIN

ELECTRICAL DATA

CONTACT ARRANGEMENT	SEE CIRCUIT DIAGRAM
15A	125, 250 OR 480 VAC
1A	125 VDC, 0.5A 250 VDC
1/4 HP	125 VAC, 1/2 HP 250 VAC



SCALE FULL

DO NOT SCALE PRINT	
UNLESS OTHERWISE SPECIFIED	
DIMENSIONS ARE IN INCHES	
TOLERANCES ARE:	
ONE PLACE (.0)	±.030
TWO PLACE (.00)	±.015
THREE PLACE (.000)	±.005
ANGLES	±
WEIGHT	

CATALOG LISTING
BZ-2AW855-D6
PAGE 1 OF 1
RELEASE NO. PR-16155
REPLACES

ISSUE	4
-------	---

REVISIONS

A	067209	JAP	2 MAY '90
B	60938	DLT	12 JUN '95
C	203596	CSL	27 JUL '01

CHECK	
CHECK	
CHECK	28 JAN 88
CHECK	DCS
CHECK	88

RASTER
DRAWN
TLB
FO-80378