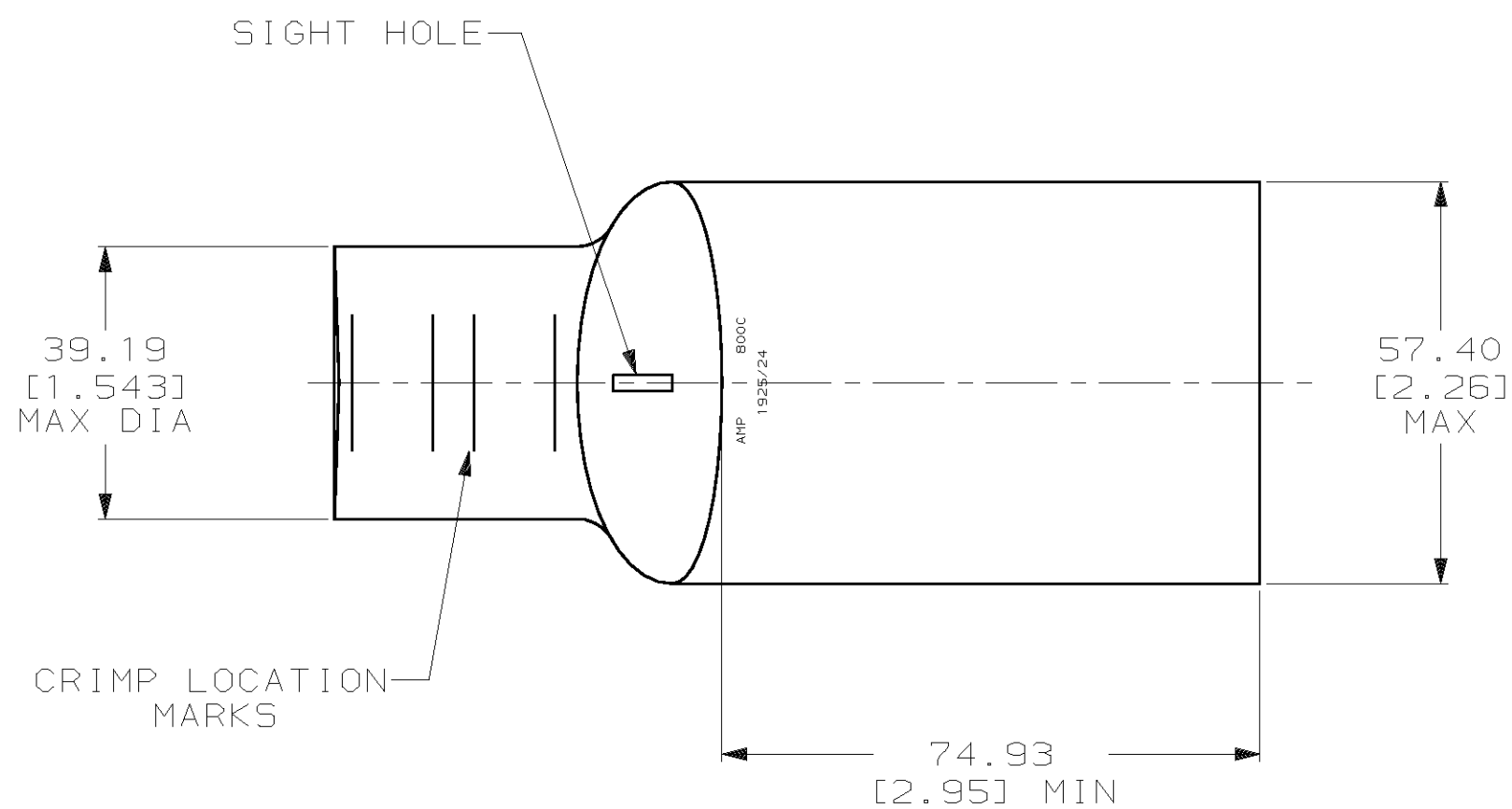
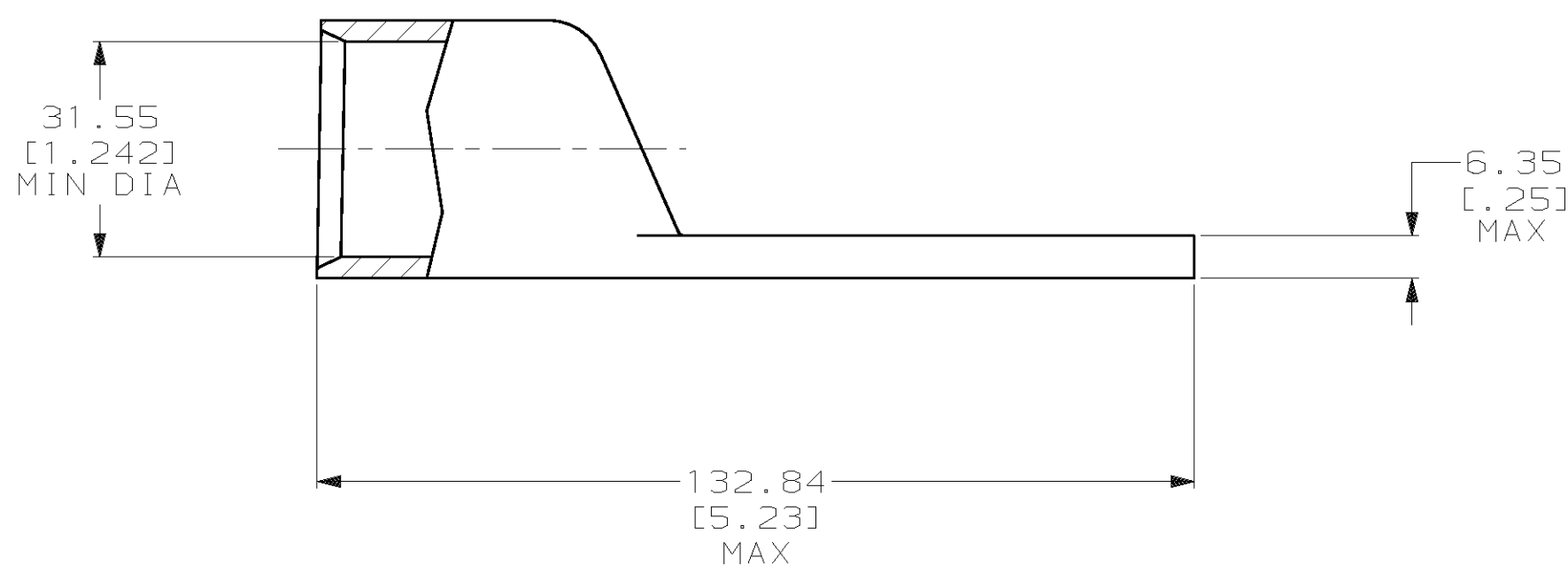


THIS DRAWING IS UNPUBLISHED. RELEASED FOR PUBLICATION ,19 .
 © COPYRIGHT 19 BY AMP INCORPORATED. ALL INTERNATIONAL RIGHTS RESERVED.

LOC		DIST		P		F		REVISIONS			
ZONE	LTR	DESCRIPTION		DATE	APPD						
G	86					B	REV PER 0G3A-0561-01	09OCT02	JR/MS		



- 1 CIRCULAR MIL RANGE: 750-850 MCM
- 2 CLEANED, UNPLATED
- 3 PREPRODUCTION - FASR REQ



DO NOT SCALE PRINT. UNLESS SPECIFIED DIMENSIONS IN mm [INCHES] TOLERANCES ON : 2 PLC DEC ± 0.51 [.020] 3 PLC DEC ± - ANGLES ± -		DR 24JAN01 JR RUTH	2 FINISH		3 696279-1 PART NO	
MATERIAL ANNEALED COPPER ASTM B-75	CHK 24JAN01 MS FEHER	APPD 24JAN01 M SPICER	AMP INCORPORATED Harrisburg, Pa. 17105 NAME TERMINAL, AMPPOWER™ WIRE SIZE: 800 MCM			
FINISH SEE NOTES	APPD 24JAN01 M SPICER	PRODUCT SPEC 108-30200				
APPLICATION SPEC -	WEIGHT .821 LB	SCALE 1:1	SIZE C	CAGE CODE 00779	DRAWING NO 696279	SHEET 1 OF 1